

Product datasheet

Anti-CYP11B1 antibody [F21 P6 F5] ab55841

[2 Images](#)

Overview

Product name	Anti-CYP11B1 antibody [F21 P6 F5]
Description	Mouse monoclonal [F21 P6 F5] to CYP11B1
Host species	Mouse
Tested applications	Suitable for: WB, IHC-P
Species reactivity	Reacts with: Human
Immunogen	Synthetic peptide derived from the C terminus of human CYP450 4F11
Positive control	Liposarcoma tissue, kidney
General notes	<p>The Life Science industry has been in the grips of a reproducibility crisis for a number of years. Abcam is leading the way in addressing this with our range of recombinant monoclonal antibodies and knockout edited cell lines for gold-standard validation. Please check that this product meets your needs before purchasing.</p> <p>If you have any questions, special requirements or concerns, please send us an inquiry and/or contact our Support team ahead of purchase. Recommended alternatives for this product can be found below, along with publications, customer reviews and Q&As</p>

Properties

Form	Liquid
Storage instructions	Shipped at 4°C. Upon delivery aliquot and store at -20°C. Avoid freeze / thaw cycles.
Storage buffer	Preservative: 0.08% Sodium azide Constituent: PBS
Purity	Protein G purified
Clonality	Monoclonal
Clone number	F21 P6 F5
Myeloma	Ag8.653
Isotype	IgG1

Applications

The Abpromise guarantee

Our **Abpromise guarantee** covers the use of ab55841 in the following tested applications.

The application notes include recommended starting dilutions; optimal dilutions/concentrations should be determined by the end user.

Application	Abreviews	Notes
WB		Use a concentration of 1 - 2 µg/ml. Detects a band of approximately 60 kDa (predicted molecular weight: 60 kDa).
IHC-P		Use a concentration of 1 - 5 µg/ml.

Target

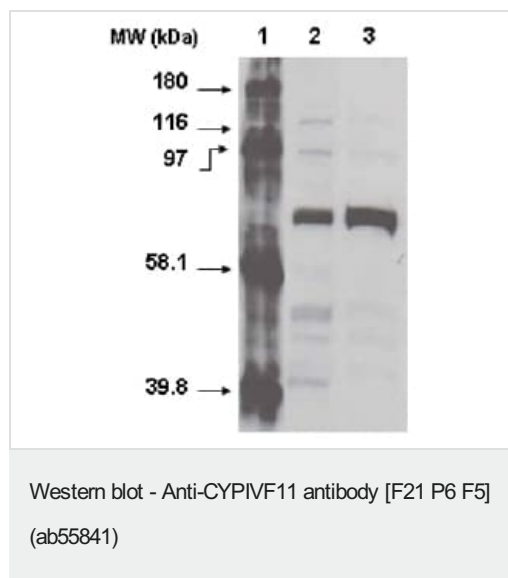
Relevance

CYP11B1 is a member of the cytochrome P450 family of cytochrome monooxidases that catalyze many reactions involved in drug metabolism and synthesis of cholesterol, steroids and other lipids. CYP11B1 has catalytic properties towards endogenous eicosanoids as well as some clinically relevant drugs, and is able to metabolize large molecules such as erythromycin.

Cellular localization

Endoplasmic reticulum membrane; Single pass membrane protein

Images



All lanes : Anti-CYP11B1 antibody [F21 P6 F5] (ab55841) at 1 µg/ml

Lane 1 : molecular weight markers

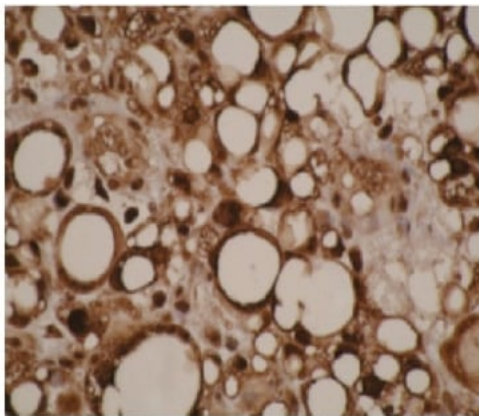
Lane 2 : normal kidney cell lysate

Lane 3 : kidney cancer cell lysate

Lysates/proteins at 20 µg per lane.

Predicted band size: 60 kDa

Observed band size: 60 kDa



Immunohistochemistry (Formalin/PFA-fixed paraffin-embedded sections) - Anti-CYPIVF11 antibody [F21 P6 F5] (ab55841)

ab55841 at 1 µg/ml staining human liposarcoma cells; formalin fixed, paraffin embedded.

Please note: All products are "FOR RESEARCH USE ONLY. NOT FOR USE IN DIAGNOSTIC PROCEDURES"

Our Abpromise to you: Quality guaranteed and expert technical support

- Replacement or refund for products not performing as stated on the datasheet
- Valid for 12 months from date of delivery
- Response to your inquiry within 24 hours
- We provide support in Chinese, English, French, German, Japanese and Spanish
- Extensive multi-media technical resources to help you
- We investigate all quality concerns to ensure our products perform to the highest standards

If the product does not perform as described on this datasheet, we will offer a refund or replacement. For full details of the Abpromise, please visit <https://www.abcam.com/abpromise> or contact our technical team.

Terms and conditions

- Guarantee only valid for products bought direct from Abcam or one of our authorized distributors