



## Product datasheet

# Anti-Cystathionase/CTH antibody ab125210

[2 References](#) [2 Images](#)

### Overview

<b>Product name</b>	Anti-Cystathionase/CTH antibody
<b>Description</b>	Rabbit polyclonal to Cystathionase/CTH
<b>Host species</b>	Rabbit
<b>Tested applications</b>	<b>Suitable for:</b> IHC-P, WB
<b>Species reactivity</b>	<b>Reacts with:</b> Human
<b>Immunogen</b>	Synthetic peptide within Human Cystathionase/CTH aa 300-400. The exact immunogen sequence used to generate this antibody is proprietary information. If additional detail on the immunogen is needed to determine the suitability of the antibody for your needs, please <a href="#">contact</a> our Scientific Support team to discuss your requirements. Database link: <a href="#">P32929</a>
	 <a href="#">Run BLAST with</a>  <a href="#">Run BLAST with</a>
<b>Positive control</b>	IHC-P: Human liver tissue. WB: SMCC, HT1080, HeLa and U-87 MG cell lysates.

### Properties

<b>Form</b>	Liquid
<b>Storage instructions</b>	Shipped at 4°C. Store at +4°C short term (1-2 weeks). Upon delivery aliquot. Store at -20°C long term.
<b>Storage buffer</b>	Preservatives: 0.025% Sodium azide, 0.025% Thimerosal (merthiolate) Constituents: 2.5% BSA, 0.45% Sodium chloride, 0.1% Dibasic monohydrogen sodium phosphate
<b>Purity</b>	Immunogen affinity purified
<b>Clonality</b>	Polyclonal
<b>Isotype</b>	IgG

### Applications

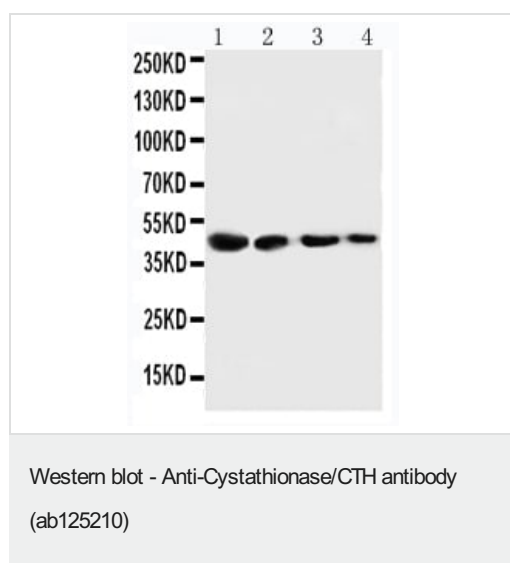
**The Abpromise guarantee** Our [Abpromise guarantee](#) covers the use of ab125210 in the following tested applications. The application notes include recommended starting dilutions; optimal dilutions/concentrations should be determined by the end user.

Application	Abreviews	Notes
IHC-P		Use a concentration of 0.5 - 1 µg/ml. Perform heat mediated antigen retrieval before commencing with IHC staining protocol.
WB		Use a concentration of 0.1 - 0.5 µg/ml. Predicted molecular weight: 45 kDa.

## Target

<b>Function</b>	Catalyzes the last step in the transsulfuration pathway from methionine to cysteine. Has broad substrate specificity. Converts cystathionine to cysteine, ammonia and 2-oxobutanoate. Converts two cysteine molecules to lanthionine and hydrogen sulfide. Can also accept homocysteine as substrate. Specificity depends on the levels of the endogenous substrates. Generates the endogenous signaling molecule hydrogen sulfide (H <sub>2</sub> S), and so contributes to the regulation of blood pressure.
<b>Pathway</b>	Amino-acid biosynthesis; L-cysteine biosynthesis; L-cysteine from L-homocysteine and L-serine: step 2/2.
<b>Involvement in disease</b>	Defects in CTH are the cause of cystathioninuria (CSTNU) [MIM:219500]. It is an autosomal recessive phenotype characterized by abnormal accumulation of plasma cystathionine, leading to increased urinary excretion.
<b>Sequence similarities</b>	Belongs to the trans-sulfuration enzymes family.
<b>Post-translational modifications</b>	Phosphorylated upon DNA damage, probably by ATM or ATR.
<b>Cellular localization</b>	Cytoplasm.

## Images



**All lanes :** Anti-Cystathionase/CTH antibody (ab125210) at 0.5 µg/ml

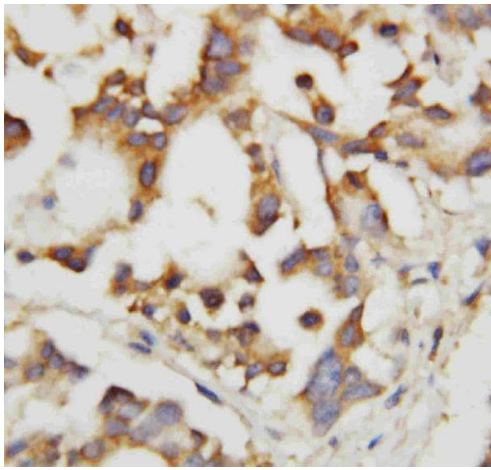
**Lane 1 :** SMMC-7721 (Human hepatocarcinoma cell line) whole cell lysate

**Lane 2 :** HT-1080 (Human fibrosarcoma cell line) whole cell lysate

**Lane 3 :** HeLa (Human epithelial cell line from cervix adenocarcinoma) whole cell lysate

**Lane 4 :** U-87 MG (Human glioblastoma-astrocytoma epithelial cell line) whole cell lysate

**Predicted band size:** 45 kDa



Immunohistochemical analysis of paraffin-embedded human liver tissue labeling Cystathionase/CTH with ab125210 at 0.5 µg/ml.

Immunohistochemistry (Formalin/PFA-fixed paraffin-embedded sections) - Anti-Cystathionase/CTH antibody (ab125210)

**Please note:** All products are "FOR RESEARCH USE ONLY. NOT FOR USE IN DIAGNOSTIC PROCEDURES"

#### Our Abpromise to you: Quality guaranteed and expert technical support

---

- Replacement or refund for products not performing as stated on the datasheet
- Valid for 12 months from date of delivery
- Response to your inquiry within 24 hours
- We provide support in Chinese, English, French, German, Japanese and Spanish
- Extensive multi-media technical resources to help you
- We investigate all quality concerns to ensure our products perform to the highest standards

If the product does not perform as described on this datasheet, we will offer a refund or replacement. For full details of the Abpromise, please visit <https://www.abcam.com/abpromise> or contact our technical team.

#### Terms and conditions

---

- Guarantee only valid for products bought direct from Abcam or one of our authorized distributors