


Product datasheet

Anti-Cytochrome C antibody [EP1326-80-5-4] ab76237

Recombinant RabMAb

[15 References](#) [4 Images](#)

Overview

Product name	Anti-Cytochrome C antibody [EP1326-80-5-4]
Description	Rabbit monoclonal [EP1326-80-5-4] to Cytochrome C
Host species	Rabbit
Tested applications	Suitable for: WB, IHC-P Unsuitable for: Flow Cyt or ICC/IF
Species reactivity	Reacts with: Human Predicted to work with: Mouse, Rat 
Immunogen	Synthetic peptide. This information is proprietary to Abcam and/or its suppliers.
Positive control	HeLa mitochondrial lysate Human heart muscle tissue Human kidney tissue
General notes	This product is a recombinant monoclonal antibody, which offers several advantages including: <ul style="list-style-type: none"> - High batch-to-batch consistency and reproducibility - Improved sensitivity and specificity - Long-term security of supply - Animal-free production For more information see here . Our RabMAb [®] technology is a patented hybridoma-based technology for making rabbit monoclonal antibodies. For details on our patents, please refer to RabMAb[®] patents .

Properties

Form	Liquid
Storage instructions	Shipped at 4°C. Upon delivery aliquot and store at -20°C. Avoid freeze / thaw cycles.
Storage buffer	pH: 7.20 Preservative: 0.05% Sodium azide Constituents: 0.1% BSA, 40% Glycerol (glycerin, glycerine), 9.85% Tris glycine, 50% Tissue culture supernatant
Purity	Protein A purified
Clonality	Monoclonal
Clone number	EP1326-80-5-4

Isotype

IgG

Applications

The Abpromise guarantee

Our **Abpromise guarantee** covers the use of ab76237 in the following tested applications.

The application notes include recommended starting dilutions; optimal dilutions/concentrations should be determined by the end user.

Application	Abreviews	Notes
WB		1/250 - 1/500. Detects a band of approximately 14 kDa.
IHC-P		1/100 - 1/250. Perform heat mediated antigen retrieval before commencing with IHC staining protocol. Use of HRP-conjugated or polymerized HRP secondary antibodies recommended, stronger signals have been found using the polymerized HRP secondary.

Application notes

Is unsuitable for Flow Cyt or ICC/IF.

Target

Function

Electron carrier protein. The oxidized form of the cytochrome c heme group can accept an electron from the heme group of the cytochrome c1 subunit of cytochrome reductase. Cytochrome c then transfers this electron to the cytochrome oxidase complex, the final protein carrier in the mitochondrial electron-transport chain.

Plays a role in apoptosis. Suppression of the anti-apoptotic members or activation of the pro-apoptotic members of the Bcl-2 family leads to altered mitochondrial membrane permeability resulting in release of cytochrome c into the cytosol. Binding of cytochrome c to Apaf-1 triggers the activation of caspase-9, which then accelerates apoptosis by activating other caspases.

Involvement in disease

Defects in CYCS are the cause of thrombocytopenia type 4 (THC4) [MIM:612004]; also known as autosomal dominant thrombocytopenia type 4. Thrombocytopenia is the presence of relatively few platelets in blood. THC4 is a non-syndromic form of thrombocytopenia. Clinical manifestations of thrombocytopenia are absent or mild. THC4 may be caused by dysregulated platelet formation.

Sequence similarities

Belongs to the cytochrome c family.

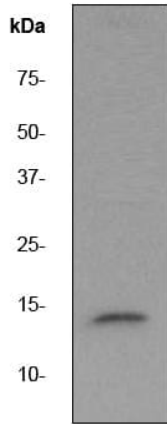
Post-translational modifications

Binds 1 heme group per subunit.

Cellular localization

Mitochondrion matrix.

Images



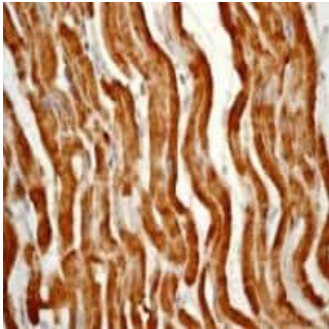
Western blot - Anti-Cytochrome C antibody
[EP1326-80-5-4] (ab76237)

Anti-Cytochrome C antibody [EP1326-80-5-4] (ab76237) at 1/500 dilution + HeLa cell lysate at 10 μ g

Secondary

goat anti-rabbit HRP at 1/1000 dilution

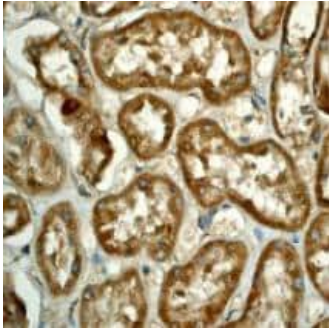
Observed band size: 14 kDa



Immunohistochemistry (Formalin/PFA-fixed paraffin-embedded sections) - Anti-Cytochrome C antibody
[EP1326-80-5-4] (ab76237)

ab76237, at a 1/100 dilution, staining human Cytochrome C in heart muscle by Immunohistochemistry, Formalin/PFA-fixed paraffin-embedded tissue.

Perform heat mediated antigen retrieval before commencing with IHC staining protocol.



Immunohistochemistry (Formalin/PFA-fixed paraffin-embedded sections) - Anti-Cytochrome C antibody [EP1326-80-5-4] (ab76237)

ab76237, at a 1/100 dilution, staining human Cytochrome C in kidney by Immunohistochemistry Formalin/PFA-fixed paraffin-embedded tissue.

Perform heat mediated antigen retrieval before commencing with IHC staining protocol.

Why choose a recombinant antibody?



Research with confidence
Consistent and reproducible results



Long-term and scalable supply
Recombinant technology



Success from the first experiment
Confirmed specificity



Ethical standards compliant
Animal-free production

Anti-Cytochrome C antibody [EP1326-80-5-4] (ab76237)

Please note: All products are "FOR RESEARCH USE ONLY. NOT FOR USE IN DIAGNOSTIC PROCEDURES"

Our Abpromise to you: Quality guaranteed and expert technical support

- Replacement or refund for products not performing as stated on the datasheet
- Valid for 12 months from date of delivery
- Response to your inquiry within 24 hours
- We provide support in Chinese, English, French, German, Japanese and Spanish
- Extensive multi-media technical resources to help you
- We investigate all quality concerns to ensure our products perform to the highest standards

If the product does not perform as described on this datasheet, we will offer a refund or replacement. For full details of the Abpromise, please visit <https://www.abcam.com/abpromise> or contact our technical team.

Terms and conditions

- Guarantee only valid for products bought direct from Abcam or one of our authorized distributors