

## Product datasheet

# Anti-Cytochrome P450 2E1 antibody ab28146

★★★★★ [6 Abreviews](#) [138 References](#) [3 Images](#)

### Overview

<b>Product name</b>	Anti-Cytochrome P450 2E1 antibody
<b>Description</b>	Rabbit polyclonal to Cytochrome P450 2E1
<b>Host species</b>	Rabbit
<b>Specificity</b>	The antibody detects a ~50-55 kDa protein, corresponding to the apparent molecular mass of cytochrome P450 IIE1 on SDS-PAGE immunoblots.
<b>Tested applications</b>	<b>Suitable for:</b> WB, ICC/IF
<b>Species reactivity</b>	<b>Reacts with:</b> Mouse, Rat, Rabbit, Human
<b>Immunogen</b>	Full length native protein (purified) (Rat)
<b>General notes</b>	<p>The antibody has been shown to inhibit microsomal benzene metabolism</p> <p>The Life Science industry has been in the grips of a reproducibility crisis for a number of years. Abcam is leading the way in addressing this with our range of recombinant monoclonal antibodies and knockout edited cell lines for gold-standard validation. Please check that this product meets your needs before purchasing.</p> <p>If you have any questions, special requirements or concerns, please send us an inquiry and/or contact our Support team ahead of purchase. Recommended alternatives for this product can be found below, along with publications, customer reviews and Q&amp;As</p>

### Properties

<b>Form</b>	Liquid
<b>Storage instructions</b>	Shipped at 4°C. Store at +4°C short term (1-2 weeks). Upon delivery aliquot. Store at -20°C long term. Avoid freeze / thaw cycle.
<b>Storage buffer</b>	Preservative: 0.09% Sodium azide Constituents: PBS, 50% Glycerol (glycerin, glycerine)
<b>Purity</b>	Protein A purified
<b>Primary antibody notes</b>	The antibody has been shown to inhibit microsomal benzene metabolism
<b>Clonality</b>	Polyclonal
<b>Isotype</b>	IgG

## Applications

### The Abpromise guarantee

Our **Abpromise guarantee** covers the use of ab28146 in the following tested applications.

The application notes include recommended starting dilutions; optimal dilutions/concentrations should be determined by the end user.

Application	Abreviews	Notes
WB	★★★★★ (2)	1/5000. Predicted molecular weight: 50-55 kDa. This dilution was sufficient for detection of Cytochrome P450 in 20ug of human liver microsomes by colorimetric immunoblot analysis using Goat anti-Rabbit IgG:AP as the secondary antibody.
ICC/IF		1/1000.

## Target

### Function

Metabolizes several precarcinogens, drugs, and solvents to reactive metabolites. Inactivates a number of drugs and xenobiotics and also bioactivates many xenobiotic substrates to their hepatotoxic or carcinogenic forms.

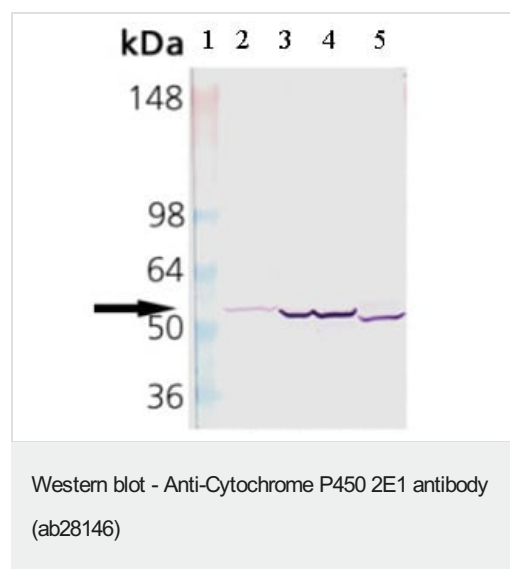
### Sequence similarities

Belongs to the cytochrome P450 family.

### Cellular localization

Endoplasmic reticulum membrane. Microsome membrane.

## Images



**All lanes :** Anti-Cytochrome P450 2E1 antibody (ab28146) at 1/1000 dilution

**Lane 1 :** Molecular weight marker

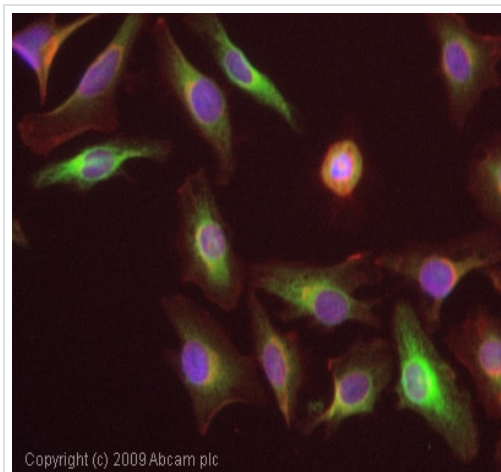
**Lane 2 :** Cell lysates prepared from human liver microsomes

**Lane 3 :** Cell lysates prepared from rat liver microsomes

**Lane 4 :** Cell lysates prepared from mouse liver microsomes

**Lane 5 :** Cell lysates prepared from rabbit liver microsomes

**Predicted band size:** 50-55 kDa



Copyright (c) 2009 Abcam plc

Immunocytochemistry/ Immunofluorescence - Anti-Cytochrome P450 2E1 antibody (ab28146)



Western blot - Anti-Cytochrome P450 2E1 antibody (ab28146)

Image courtesy of an anonymous Abreview.

ICC/IF image of ab28146 stained HeLa cells. The cells were 4% PFA fixed (10 min) and then incubated in 1%BSA / 10% normal goat serum / 0.3M glycine in 0.1% PBS-Tween for 1h to permeabilise the cells and block non-specific protein-protein interactions. The cells were then incubated with the antibody (ab28146, 1/1000 dilution) overnight at +4°C. The secondary antibody (green) was Alexa Fluor® 488 goat anti-rabbit IgG (H+L) used at a 1/1000 dilution for 1h. Alexa Fluor® 594 WGA was used to label plasma membranes (red) at a 1/200 dilution for 1h. DAPI was used to stain the cell nuclei (blue) at a concentration of 1.43µM.

**All lanes :** Anti-Cytochrome P450 2E1 antibody (ab28146) at 1/2500 dilution

**All lanes :** Tissue lysate prepared from normal murine liver

Lysates/proteins at 10 µg per lane.

#### Secondary

**All lanes :** Goat anti-rabbit IgG-HRP at 1/5000 dilution

Developed using the ECL technique.

**Predicted band size:** 50-55 kDa

**Observed band size:** 55 kDa

**Exposure time:** 3 seconds

**Please note:** All products are "FOR RESEARCH USE ONLY. NOT FOR USE IN DIAGNOSTIC PROCEDURES"

**Our Abpromise to you: Quality guaranteed and expert technical support**

- Replacement or refund for products not performing as stated on the datasheet
- Valid for 12 months from date of delivery
- Response to your inquiry within 24 hours
- We provide support in Chinese, English, French, German, Japanese and Spanish
- Extensive multi-media technical resources to help you
- We investigate all quality concerns to ensure our products perform to the highest standards

If the product does not perform as described on this datasheet, we will offer a refund or replacement. For full details of the Abpromise, please visit <https://www.abcam.com/abpromise> or contact our technical team.

#### **Terms and conditions**

---

- Guarantee only valid for products bought direct from Abcam or one of our authorized distributors