


# Anti-Cytoglobin antibody ab127028

[1 References](#) [2 Images](#)

### Overview

<b>Product name</b>	Anti-Cytoglobin antibody
<b>Description</b>	Rabbit polyclonal to Cytoglobin
<b>Host species</b>	Rabbit
<b>Tested applications</b>	<b>Suitable for:</b> WB
<b>Species reactivity</b>	<b>Reacts with:</b> Mouse, Human <b>Predicted to work with:</b> Rat, Sheep, Dog 
<b>Immunogen</b>	Recombinant fragment, corresponding to a region within amino acids 1-153 of Human Cytoglobin (UniProt Q8WWM9).
<b>Positive control</b>	IMR32 and Mouse heart whole cell lysates
<b>General notes</b>	<p>Store undiluted.</p> <p>The Life Science industry has been in the grips of a reproducibility crisis for a number of years. Abcam is leading the way in addressing this with our range of recombinant monoclonal antibodies and knockout edited cell lines for gold-standard validation. Please check that this product meets your needs before purchasing.</p> <p>If you have any questions, special requirements or concerns, please send us an inquiry and/or contact our Support team ahead of purchase. Recommended alternatives for this product can be found below, along with publications, customer reviews and Q&amp;As</p>

### Properties

<b>Form</b>	Liquid
<b>Storage instructions</b>	Shipped at 4°C. Upon delivery aliquot. Store at -20°C or -80°C. Avoid freeze / thaw cycle.
<b>Storage buffer</b>	<p>pH: 7.00</p> <p>Preservative: 0.01% Thimerosal (merthiolate)</p> <p>Constituents: 78.99% PBS, 1% BSA, 20% Glycerol (glycerin, glycerine)</p>
<b>Purity</b>	Immunogen affinity purified
<b>Clonality</b>	Polyclonal
<b>Isotype</b>	IgG

### Applications

## The Abpromise guarantee

Our **Abpromise guarantee** covers the use of ab127028 in the following tested applications.

The application notes include recommended starting dilutions; optimal dilutions/concentrations should be determined by the end user.

Application	Abreviews	Notes
WB		1/500 - 1/3000. Predicted molecular weight: 21 kDa.

## Target

### Function

May have a protective function during conditions of oxidative stress. May be involved in intracellular oxygen storage or transfer.

### Tissue specificity

Ubiquitously expressed. Highest expression in heart, stomach, bladder and small intestine.

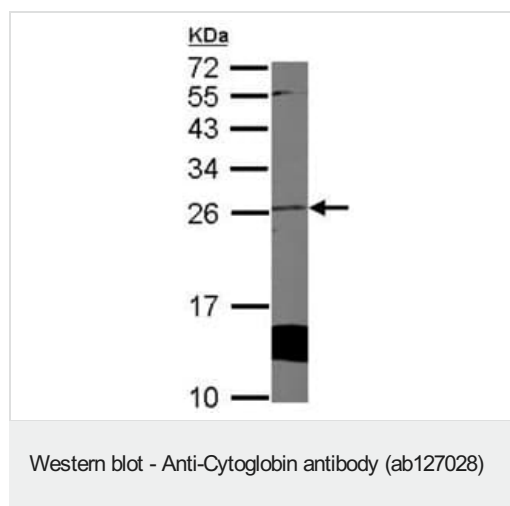
### Sequence similarities

Belongs to the globin family.

### Cellular localization

Cytoplasm.

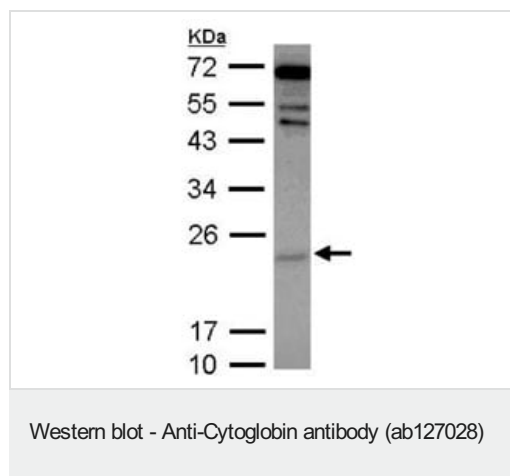
## Images



Anti-Cytoglobin antibody (ab127028) at 1/1000 dilution + Mouse heart whole cell lysate at 50 µg

**Predicted band size:** 21 kDa

12% SDS-PAGE



Anti-Cytoglobin antibody (ab127028) at 1/2000 dilution + IMR32 whole cell lysate at 30 µg

**Predicted band size:** 21 kDa

12% SDS-PAGE

**Please note:** All products are "FOR RESEARCH USE ONLY. NOT FOR USE IN DIAGNOSTIC PROCEDURES"

### **Our Abpromise to you: Quality guaranteed and expert technical support**

---

- Replacement or refund for products not performing as stated on the datasheet
- Valid for 12 months from date of delivery
- Response to your inquiry within 24 hours
  
- We provide support in Chinese, English, French, German, Japanese and Spanish
- Extensive multi-media technical resources to help you
- We investigate all quality concerns to ensure our products perform to the highest standards

If the product does not perform as described on this datasheet, we will offer a refund or replacement. For full details of the Abpromise, please visit <https://www.abcam.com/abpromise> or contact our technical team.

### **Terms and conditions**

---

- Guarantee only valid for products bought direct from Abcam or one of our authorized distributors