

Product datasheet

Anti-Cytokeratin 10 + 13 antibody [DE-K13] ab9383

★★★★☆ [2 Abreviews](#) [1 References](#) [1 Image](#)

Overview

| | |
|----------------------------|---|
| Product name | Anti-Cytokeratin 10 + 13 antibody [DE-K13] |
| Description | Mouse monoclonal [DE-K13] to Cytokeratin 10 + 13 |
| Host species | Mouse |
| Specificity | This antibody reacts with cytokeratin 10 and 13 in fixed cells and frozen tissue, but exclusively with cytokeratin 13 in formalin fixed paraffin embedded tissue. |
| Tested applications | Suitable for: IHC-Fr |
| Species reactivity | Reacts with: Zebrafish |
| Immunogen | Full length protein corresponding to Human Cytokeratin 10 + 13. Cytoskeletal preparation extracted from human ectocervical epithelium |
| General notes | <p>The Life Science industry has been in the grips of a reproducibility crisis for a number of years. Abcam is leading the way in addressing this with our range of recombinant monoclonal antibodies and knockout edited cell lines for gold-standard validation. Please check that this product meets your needs before purchasing.</p> <p>If you have any questions, special requirements or concerns, please send us an inquiry and/or contact our Support team ahead of purchase. Recommended alternatives for this product can be found below, along with publications, customer reviews and Q&As</p> |

Properties

| | |
|-----------------------------|--|
| Form | Liquid |
| Storage instructions | Shipped at 4°C. Store at +4°C short term (1-2 weeks). Upon delivery aliquot. Store at -20°C or -80°C. Avoid freeze / thaw cycle. |
| Storage buffer | Preservative: 0.09% Sodium azide Constituent: PBS |
| Purity | Protein A purified |
| Clonality | Monoclonal |
| Clone number | DE-K13 |
| Myeloma | Sp2/0 |
| Isotype | IgG2a |
| Light chain type | kappa |

Applications

The Abpromise guarantee

Our **Abpromise guarantee** covers the use of ab9383 in the following tested applications.

The application notes include recommended starting dilutions; optimal dilutions/concentrations should be determined by the end user.

| Application | Abreviews | Notes |
|-------------|-----------|--|
| IHC-Fr | ★★★★☆ (1) | Use at an assay dependent concentration. Reacts with cytokeratin 10 and 13 in frozen tissues. |

Target

Tissue specificity

Seen in all suprabasal cell layers including stratum corneum.

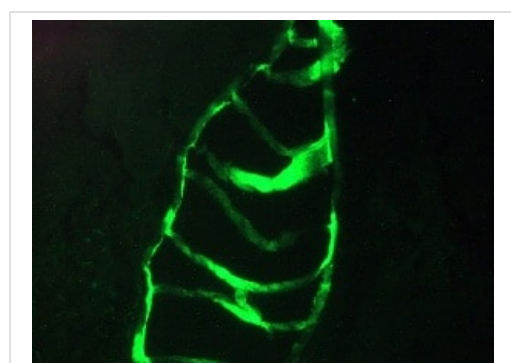
Involvement in disease

Epidermolytic hyperkeratosis
Ichthyosis annular epidermolytic
Erythroderma, ichthyosiform, congenital reticular

Sequence similarities

Belongs to the intermediate filament family.

Images



Immunofluorescence staining of a 7 days old zebrafish embryo

Immunohistochemistry (Frozen sections) - Anti-Cytokeratin 10 + 13 antibody [DE-K13] (ab9383)

Please note: All products are "FOR RESEARCH USE ONLY. NOT FOR USE IN DIAGNOSTIC PROCEDURES"

Our Abpromise to you: Quality guaranteed and expert technical support

- Replacement or refund for products not performing as stated on the datasheet
- Valid for 12 months from date of delivery
- Response to your inquiry within 24 hours
- We provide support in Chinese, English, French, German, Japanese and Spanish
- Extensive multi-media technical resources to help you

- We investigate all quality concerns to ensure our products perform to the highest standards

If the product does not perform as described on this datasheet, we will offer a refund or replacement. For full details of the Abpromise, please visit <https://www.abcam.com/abpromise> or contact our technical team.

Terms and conditions

- Guarantee only valid for products bought direct from Abcam or one of our authorized distributors