

# Anti-Cytokeratin 18 antibody [DC10] ab231431

[13 Images](#)

### Overview

---

<b>Product name</b>	Anti-Cytokeratin 18 antibody [DC10]
<b>Description</b>	Mouse monoclonal [DC10] to Cytokeratin 18
<b>Host species</b>	Mouse
<b>Tested applications</b>	<b>Suitable for:</b> IHC-P, WB
<b>Species reactivity</b>	<b>Reacts with:</b> Human
<b>Immunogen</b>	Tissue, cells or virus corresponding to Human Cytokeratin 18. Human breast cancer PMC42 cells.
<b>Positive control</b>	IHC-P: Human breast carcinoma, breast, ductal carcinoma, hepatocellular carcinoma, ductal carcinoma, prostate, prostate adenocarcinoma, colon, colon adenocarcinoma, bladder, bladder transitional cell carcinoma and liver tissues. WB: A431 cell lysate.

### General notes

**This product is FOR RESEARCH USE ONLY. For commercial use, please contact [partnerships@abcam.com](mailto:partnerships@abcam.com).**

The Life Science industry has been in the grips of a reproducibility crisis for a number of years. Abcam is leading the way in addressing this with our range of recombinant monoclonal antibodies and knockout edited cell lines for gold-standard validation. Please check that this product meets your needs before purchasing.

If you have any questions, special requirements or concerns, please send us an inquiry and/or contact our Support team ahead of purchase. Recommended alternatives for this product can be found below, along with publications, customer reviews and Q&As

### Properties

---

<b>Form</b>	Liquid
<b>Storage instructions</b>	Shipped at 4°C. Store at +4°C short term (1-2 weeks). Upon delivery aliquot. Store at -20°C long term. Avoid freeze / thaw cycle.
<b>Storage buffer</b>	pH: 7.60 Preservative: 0.1% Sodium azide Constituents: PBS, 1% BSA
<b>Purity</b>	Protein A/G purified
<b>Purification notes</b>	Purified from TCS by Protein A/G.
<b>Clonality</b>	Monoclonal

Clone number DC10  
Isotype IgG1

## Applications

**The Abpromise guarantee** Our **Abpromise guarantee** covers the use of ab231431 in the following tested applications.

The application notes include recommended starting dilutions; optimal dilutions/concentrations should be determined by the end user.

Application	Abreviews	Notes
IHC-P		1/100. Boil tissue section in Citrate buffer, pH 6.0 for 10 minutes followed by cooling at room temperature for 20 minutes. Incubate with primary antibody for 30 minutes at room temperature.
WB		1/25. Predicted molecular weight: 48 kDa.

## Target

<b>Function</b>	Involved in the uptake of thrombin-antithrombin complexes by hepatic cells (By similarity). When phosphorylated, plays a role in filament reorganization. Involved in the delivery of mutated CFTR to the plasma membrane. Together with KRT8, is involved in interleukin-6 (IL-6)-mediated barrier protection.
<b>Tissue specificity</b>	Expressed in colon, placenta, liver and very weakly in exocervix. Increased expression observed in lymph nodes of breast carcinoma.
<b>Involvement in disease</b>	Defects in KRT18 are a cause of cirrhosis (CIRRH) [MIM:215600].
<b>Sequence similarities</b>	Belongs to the intermediate filament family.
<b>Post-translational modifications</b>	Phosphorylation at Ser-34 increases during mitosis. Hyperphosphorylated at Ser-53 in diseased cirrhosis liver. Phosphorylation increases by IL-6. Proteolytically cleaved by caspases during epithelial cell apoptosis. Cleavage occurs at Asp-238 by either caspase-3, caspase-6 or caspase-7. O-glycosylated at multiple sites; glycans consist of single N-acetylglucosamine residues.
<b>Cellular localization</b>	Cytoplasm > perinuclear region.

## Images

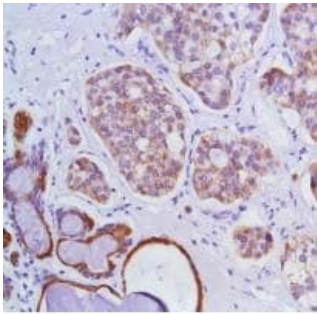


Western blot - Anti-Cytokeratin 18 antibody [DC10]  
(ab231431)

Anti-Cytokeratin 18 antibody [DC10] (ab231431) at 1/25 dilution +  
A431 (human epidermoid carcinoma cell line) cell lysate.

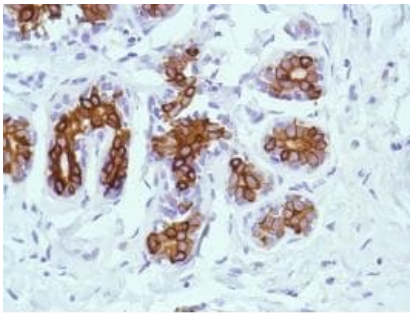
Developed using the ECL technique.

**Predicted band size:** 48 kDa



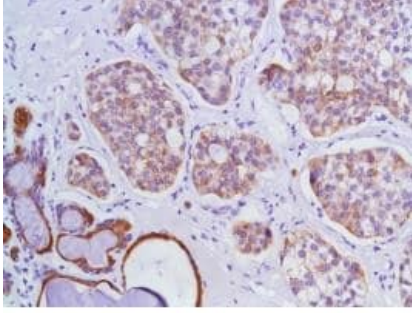
Immunohistochemistry (Formalin/PFA-fixed paraffin-  
embedded sections) - Anti-Cytokeratin 18 antibody  
[DC10] (ab231431)

Formalin-fixed, paraffin-embedded human breast carcinoma tissue  
stained for Cytokeratin 18 using ab231431 at 1/100 dilution in  
immunohistochemical analysis.



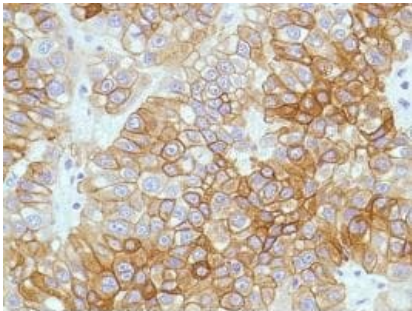
Immunohistochemistry (Formalin/PFA-fixed paraffin-  
embedded sections) - Anti-Cytokeratin 18 antibody  
[DC10] (ab231431)

Formalin-fixed, paraffin-embedded human breast tissue stained for  
Cytokeratin 18 using ab231431 at 1/100 dilution in  
immunohistochemical analysis.



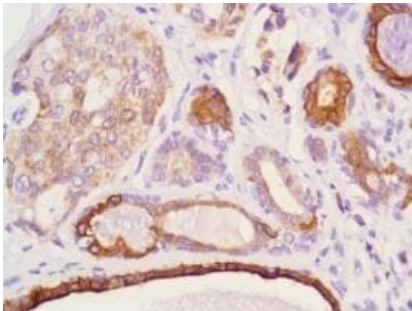
Immunohistochemistry (Formalin/PFA-fixed paraffin-embedded sections) - Anti-Cytokeratin 18 antibody [DC10] (ab231431)

Formalin-fixed, paraffin-embedded human breast ductal carcinoma tissue stained for Cytokeratin 18 using ab231431 at 1/100 dilution in immunohistochemical analysis.



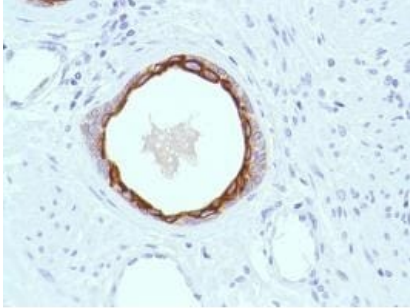
Immunohistochemistry (Formalin/PFA-fixed paraffin-embedded sections) - Anti-Cytokeratin 18 antibody [DC10] (ab231431)

Formalin-fixed, paraffin-embedded human hepatocellular carcinoma tissue stained for Cytokeratin 18 using ab231431 at 1/100 dilution in immunohistochemical analysis.



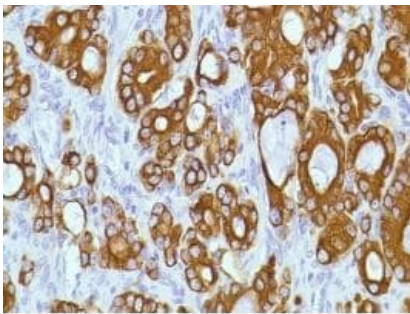
Immunohistochemistry (Formalin/PFA-fixed paraffin-embedded sections) - Anti-Cytokeratin 18 antibody [DC10] (ab231431)

Formalin-fixed, paraffin-embedded human breast ductal carcinoma tissue stained for Cytokeratin 18 using ab231431 at 1/100 dilution in immunohistochemical analysis.



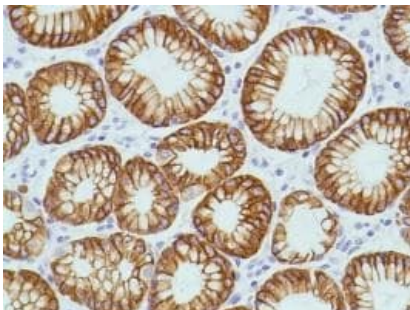
Immunohistochemistry (Formalin/PFA-fixed paraffin-embedded sections) - Anti-Cytokeratin 18 antibody [DC10] (ab231431)

Formalin-fixed, paraffin-embedded human prostate tissue stained for Cytokeratin 18 using ab231431 at 1/100 dilution in immunohistochemical analysis.



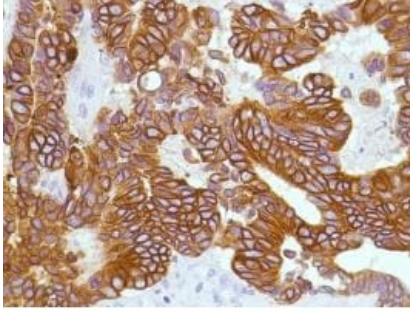
Immunohistochemistry (Formalin/PFA-fixed paraffin-embedded sections) - Anti-Cytokeratin 18 antibody [DC10] (ab231431)

Formalin-fixed, paraffin-embedded human prostate Adenocarcinoma tissue stained for Cytokeratin 18 using ab231431 at 1/100 dilution in immunohistochemical analysis.



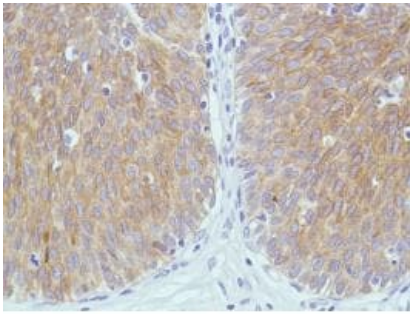
Immunohistochemistry (Formalin/PFA-fixed paraffin-embedded sections) - Anti-Cytokeratin 18 antibody [DC10] (ab231431)

Formalin-fixed, paraffin-embedded human colon tissue stained for Cytokeratin 18 using ab231431 at 1/100 dilution in immunohistochemical analysis.



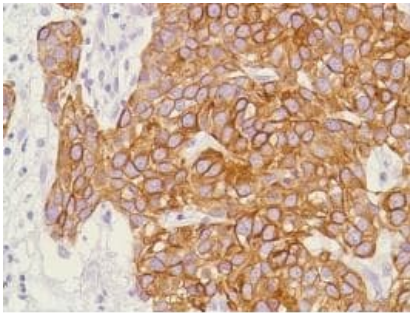
Immunohistochemistry (Formalin/PFA-fixed paraffin-embedded sections) - Anti-Cytokeratin 18 antibody [DC10] (ab231431)

Formalin-fixed, paraffin-embedded human colon Adenocarcinoma tissue stained for Cytokeratin 18 using ab231431 at 1/100 dilution in immunohistochemical analysis.



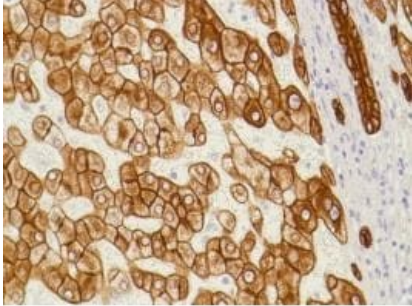
Immunohistochemistry (Formalin/PFA-fixed paraffin-embedded sections) - Anti-Cytokeratin 18 antibody [DC10] (ab231431)

Formalin-fixed, paraffin-embedded human bladder tissue stained for Cytokeratin 18 using ab231431 at 1/100 dilution in immunohistochemical analysis.



Immunohistochemistry (Formalin/PFA-fixed paraffin-embedded sections) - Anti-Cytokeratin 18 antibody [DC10] (ab231431)

Formalin-fixed, paraffin-embedded human bladder transitional cell carcinoma tissue stained for Cytokeratin 18 using ab231431 at 1/100 dilution in immunohistochemical analysis.



Formalin-fixed, paraffin-embedded human liver tissue stained for Cytokeratin 18 using ab231431 at 1/100 dilution in immunohistochemical analysis.

Immunohistochemistry (Formalin/PFA-fixed paraffin-embedded sections) - Anti-Cytokeratin 18 antibody [DC10] (ab231431)

**Please note:** All products are "FOR RESEARCH USE ONLY. NOT FOR USE IN DIAGNOSTIC PROCEDURES"

### **Our Abpromise to you: Quality guaranteed and expert technical support**

---

- Replacement or refund for products not performing as stated on the datasheet
- Valid for 12 months from date of delivery
- Response to your inquiry within 24 hours
  
- We provide support in Chinese, English, French, German, Japanese and Spanish
- Extensive multi-media technical resources to help you
- We investigate all quality concerns to ensure our products perform to the highest standards

If the product does not perform as described on this datasheet, we will offer a refund or replacement. For full details of the Abpromise, please visit <https://www.abcam.com/abpromise> or contact our technical team.

### **Terms and conditions**

---

- Guarantee only valid for products bought direct from Abcam or one of our authorized distributors