

Product datasheet

Anti-Cytokeratin 3/CK-3 antibody [AE5] ab77869

★★★★★ [1 Abreviews](#) [15 References](#) [1 Image](#)

Overview

Product name	Anti-Cytokeratin 3/CK-3 antibody [AE5]
Description	Mouse monoclonal [AE5] to Cytokeratin 3/CK-3
Host species	Mouse
Tested applications	Suitable for: WB, IHC-P, ICC/IF, Flow Cyt
Species reactivity	Reacts with: Rabbit, Cow, Human
Immunogen	Full length native protein (purified). This information is proprietary to Abcam and/or its suppliers.
General notes	<p>The Life Science industry has been in the grips of a reproducibility crisis for a number of years. Abcam is leading the way in addressing this with our range of recombinant monoclonal antibodies and knockout edited cell lines for gold-standard validation. Please check that this product meets your needs before purchasing.</p> <p>If you have any questions, special requirements or concerns, please send us an inquiry and/or contact our Support team ahead of purchase. Recommended alternatives for this product can be found below, along with publications, customer reviews and Q&As</p>

Properties

Form	Liquid
Storage instructions	Shipped at 4°C. Upon delivery aliquot and store at -20°C. Avoid repeated freeze / thaw cycles.
Storage buffer	Preservative: 0.1% Sodium azide Constituent: PBS
Purity	Protein G purified
Clonality	Monoclonal
Clone number	AE5
Myeloma	P3-x63-Ag8
Isotype	IgG1

Applications

The **Abpromise guarantee** Our **Abpromise guarantee** covers the use of ab77869 in the following tested applications.

The application notes include recommended starting dilutions; optimal dilutions/concentrations should be determined by the end user.

Application	Abreviews	Notes
WB		Use at an assay dependent concentration.
IHC-P		Use at an assay dependent concentration.
ICC/IF	★★★★★ (1)	Use at an assay dependent concentration.
Flow Cyt		Use 2µg for 10 ⁶ cells.

Target

Tissue specificity

Cornea specific.

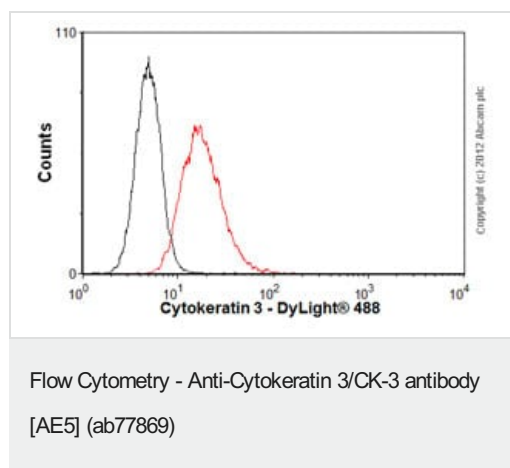
Involvement in disease

Defects in KRT3 are a cause of Meesmann corneal dystrophy (MECD) [MIM:122100]; also abbreviated as MCD and known as juvenile epithelial corneal dystrophy of Meesmann. MECD is an autosomal dominant disease that causes fragility of the anterior corneal epithelium. Patients are usually asymptomatic until adulthood when rupture of the corneal microcysts may cause erosions, producing clinical symptoms such as photophobia, contact lens intolerance and intermittent diminution of visual acuity. Rarely, subepithelial scarring causes irregular corneal astigmatism and permanent visual impairment. Histological examination shows a disorganized and thickened epithelium with widespread cytoplasmic vacuolation and numerous small, round, debris-laden intraepithelial cysts.

Sequence similarities

Belongs to the intermediate filament family.

Images



Overlay histogram showing A431 cells stained with ab77869 (red line). The cells were fixed with 80% methanol (5 min) and then permeabilized with 0.1% PBS-Tween for 20 min. The cells were then incubated in 1x PBS / 10% normal goat serum / 0.3M glycine to block non-specific protein-protein interactions. The cells were then incubated with the antibody (ab77869, 2µg/1x10⁶ cells) for 30 min at 22°C. The secondary antibody used was DyLight® 488 goat anti-mouse IgG (H+L) (ab96879) at 1/500 dilution for 30 min at 22°C. Isotype control antibody (black line) was mouse IgG1 [ICIGG1] (ab91353, 2µg/1x10⁶ cells) used under the same conditions. Acquisition of >5,000 events was performed.

Please note: All products are "FOR RESEARCH USE ONLY. NOT FOR USE IN DIAGNOSTIC PROCEDURES"

Our Abpromise to you: Quality guaranteed and expert technical support

- Replacement or refund for products not performing as stated on the datasheet
- Valid for 12 months from date of delivery
- Response to your inquiry within 24 hours
- We provide support in Chinese, English, French, German, Japanese and Spanish
- Extensive multi-media technical resources to help you
- We investigate all quality concerns to ensure our products perform to the highest standards

If the product does not perform as described on this datasheet, we will offer a refund or replacement. For full details of the Abpromise, please visit <https://www.abcam.com/abpromise> or contact our technical team.

Terms and conditions

- Guarantee only valid for products bought direct from Abcam or one of our authorized distributors