

Product datasheet

Anti-Cytokeratin 8 antibody ab59400

★★★★★ [7 Abreviews](#) [48 References](#) [6 Images](#)

Overview

Product name	Anti-Cytokeratin 8 antibody
Description	Rabbit polyclonal to Cytokeratin 8
Host species	Rabbit
Tested applications	Suitable for: ICC/IF, WB, IHC-P
Species reactivity	Reacts with: Human
Immunogen	Synthetic non-phosphopeptide derived from human Cytokeratin 8 around the phosphorylation site of serine 431 (L-T-S ^P -P-G).
General notes	<p>The Life Science industry has been in the grips of a reproducibility crisis for a number of years. Abcam is leading the way in addressing this with our range of recombinant monoclonal antibodies and knockout edited cell lines for gold-standard validation. Please check that this product meets your needs before purchasing.</p> <p>If you have any questions, special requirements or concerns, please send us an inquiry and/or contact our Support team ahead of purchase. Recommended alternatives for this product can be found below, along with publications, customer reviews and Q&As</p>

Properties

Form	Liquid
Storage instructions	Shipped at 4°C. Store at -20°C. Stable for 12 months at -20°C.
Storage buffer	<p>pH: 7.40</p> <p>Preservative: 0.02% Sodium azide</p> <p>Constituents: PBS, 50% Glycerol, 0.87% Sodium chloride</p>
Purity	Immunogen affinity purified
Clonality	Polyclonal
Isotype	IgG

Applications

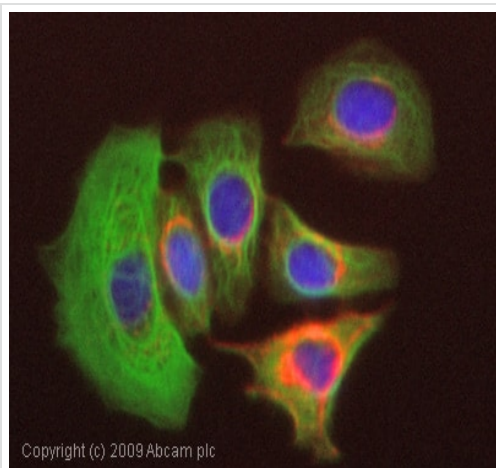
The Abpromise guarantee Our **Abpromise guarantee** covers the use of ab59400 in the following tested applications. The application notes include recommended starting dilutions; optimal dilutions/concentrations should be determined by the end user.

Application	Abreviews	Notes
ICC/IF		Use a concentration of 1 µg/ml.
WB	★★★★★ (1)	1/500 - 1/1000. Detects a band of approximately 54 kDa (predicted molecular weight: 54 kDa).
IHC-P	★★★★★ (5)	Use at an assay dependent concentration.

Target

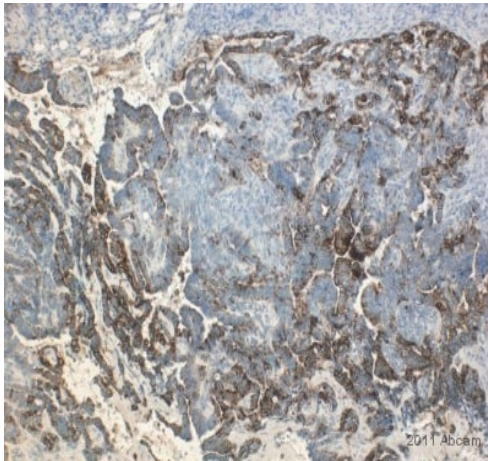
Function	Together with KRT19, helps to link the contractile apparatus to dystrophin at the costameres of striated muscle.
Tissue specificity	Observed in muscle fibers accumulating in the costameres of myoplasm at the sarcolemma membrane in structures that contain dystrophin and spectrin. Expressed in gingival mucosa and hard palate of the oral cavity.
Involvement in disease	Cirrhosis
Sequence similarities	Belongs to the intermediate filament family.
Post-translational modifications	Phosphorylation on serine residues is enhanced during EGF stimulation and mitosis. Ser-74 phosphorylation plays an important role in keratin filament reorganization. O-glycosylated. O-GlcNAcylation at multiple sites increases solubility, and decreases stability by inducing proteasomal degradation. O-glycosylated (O-GlcNAcylated), in a cell cycle-dependent manner.
Cellular localization	Cytoplasm. Nucleus, nucleoplasm. Nucleus matrix.

Images



ICC/IF image of ab59400 stained MCF7 cells. The cells were 100% methanol fixed (5 min) and then incubated in 1%BSA / 10% normal goat serum / 0.3M glycine in 0.1% PBS-Tween for 1h to permeabilise the cells and block non-specific protein-protein interactions. The cells were then incubated with the antibody (ab59400, 1µg/ml) overnight at +4°C. The secondary antibody (green) was Alexa Fluor® 488 goat anti-rabbit IgG (H+L) used at a 1/1000 dilution for 1h. Alexa Fluor® 594 WGA was used to label plasma membranes (red) at a 1/200 dilution for 1h. DAPI was used to stain the cell nuclei (blue) at a concentration of 1.43µM.

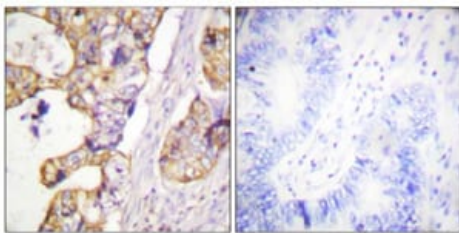
Immunocytochemistry/ Immunofluorescence - Anti-Cytokeratin 8 antibody (ab59400)



Immunohistochemistry (Formalin/PFA-fixed paraffin-embedded sections) - Anti-Cytokeratin 8 antibody (ab59400)

This image is courtesy of an Abreview provided by Megha Rajaram.

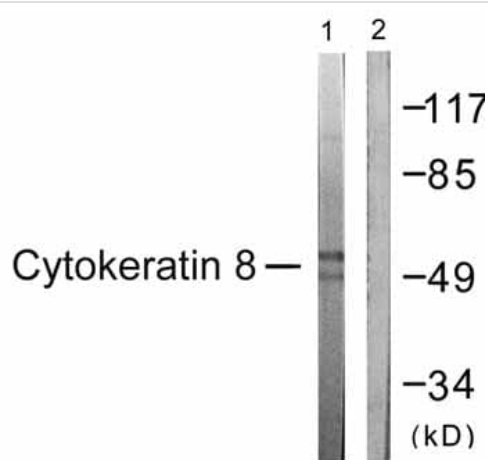
ab59400 staining Cytokeratin 8 in Human breast cancer cells xenografted into nude mice by Immunohistochemistry (Formalin/PFA-fixed paraffin-embedded tissue sections). The sections were fixed in formalin and subjected to heat-mediated antigen retrieval in citrate buffer (0.1M Sodium Citrate) prior to blocking with 5% serum for 1 hour at 4°C. The primary antibody was diluted 1/200 in 5% goat serum in PBS and incubated with the sample for 12 hours at 4°C. A Biotin-conjugated Goat anti-Rabbit polyclonal was used as the secondary antibody, diluted 1/1000.



Peptide - +

Immunohistochemistry (Formalin/PFA-fixed paraffin-embedded sections) - Anti-Cytokeratin 8 antibody (ab59400)

Immunohistochemical analysis of paraffin embedded human colon carcinoma tissue using ab59400 at 1/50 dilution, in the presence (right) and absence (left) of immunising peptide. Then, a polymer secondary antibody was used for detection.



Western blot - Anti-Cytokeratin 8 antibody (ab59400)

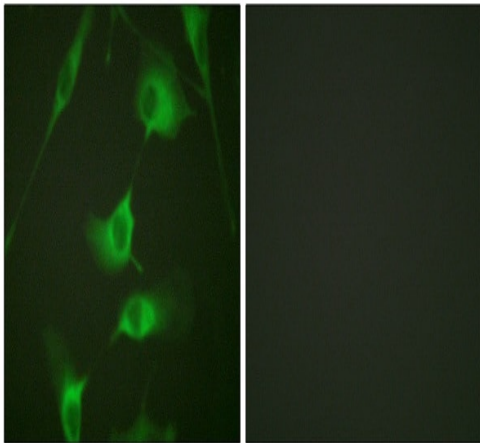
All lanes : Anti-Cytokeratin 8 antibody (ab59400) at 1/500 dilution

Lane 1 : EGF treated (200ng/ml, 30mins) 293 cell extracts

Lane 2 : EGF treated (200ng/ml, 30mins) 293 cell extracts with immunising peptide

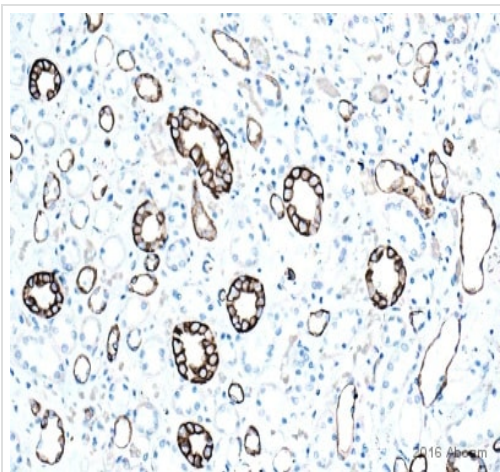
Predicted band size: 54 kDa

Observed band size: 54 kDa



Immunocytochemistry/ Immunofluorescence - Anti-Cytokeratin 8 antibody (ab59400)

Immunocytochemistry/ Immunofluorescence analysis of HeLa cells, labeling Cytokeratin 8 with ab59400. The picture on the right is blocked with the synthesized peptide.



Immunohistochemistry (Formalin/PFA-fixed paraffin-embedded sections) - Anti-Cytokeratin 8 antibody (ab59400)

This image is courtesy of an abstract submitted by Carl Hobbs, King's College London, United Kingdom

Immunohistochemistry (Formalin/PFA-fixed paraffin-embedded sections) analysis of human kidney tissue sections labeling Cytokeratin 8 with ab59400 at 1/100 dilution. Tissue sections were fixed with formaldehyde; heat mediated antigen retrieval was performed using a citric acid. 2% BSA was used to block, followed by incubation with ab59400 in TBS/BSA/azide for 2 hours at 21°C. a polyclonal goat anti-rabbit IgG biotin conjugated secondary antibody was used at 1/300 dilution.

Please note: All products are "FOR RESEARCH USE ONLY. NOT FOR USE IN DIAGNOSTIC PROCEDURES"

Our Abpromise to you: Quality guaranteed and expert technical support

- Replacement or refund for products not performing as stated on the datasheet
- Valid for 12 months from date of delivery
- Response to your inquiry within 24 hours
- We provide support in Chinese, English, French, German, Japanese and Spanish
- Extensive multi-media technical resources to help you
- We investigate all quality concerns to ensure our products perform to the highest standards

If the product does not perform as described on this datasheet, we will offer a refund or replacement. For full details of the Abpromise,

please visit <https://www.abcam.com/abpromise> or contact our technical team.

Terms and conditions

- Guarantee only valid for products bought direct from Abcam or one of our authorized distributors