


Anti-Cytokeratin 8 antibody [SP102], prediluted  
ab228149

Recombinant RabMAb

14 Images

Overview

Product name	Anti-Cytokeratin 8 antibody [SP102], prediluted
Description	Rabbit monoclonal [SP102] to Cytokeratin 8, prediluted
Host species	Rabbit
Tested applications	Suitable for: IHC-P
Species reactivity	Reacts with: Human Predicted to work with: Mouse, Rat, Cow, Pig 
Immunogen	Synthetic peptide. This information is proprietary to Abcam and/or its suppliers.
Positive control	IHC-P: Human breast ductal carcinoma, breast, lung squamous cell carcinoma, placenta, thyroid, bladder, bladder transitional cell carcinoma, stomach, stomach adenocarcinoma, prostate, prostate adenocarcinoma and lung tissue.
General notes	This product is FOR RESEARCH USE ONLY. For commercial use, please contact <a href="mailto:partnerships@abcam.com">partnerships@abcam.com</a> .

Properties

Form	Liquid
Storage instructions	Shipped at 4°C. Store at +4°C. Do Not Freeze.
Storage buffer	pH: 7.60 Preservative: 0.1% Sodium azide Constituents: Tris buffered saline, 1% BSA
Purity	Protein A/G purified
Purification notes	Purified from TCS by protein A/G.
Clonality	Monoclonal
Clone number	SP102
Isotype	IgG

## Applications

### The Abpromise guarantee

Our **Abpromise guarantee** covers the use of ab228149 in the following tested applications.

The application notes include recommended starting dilutions; optimal dilutions/concentrations should be determined by the end user.

Application	Abreviews	Notes
IHC-P		1/1. Perform heat mediated antigen retrieval with citrate buffer pH 6 before commencing with IHC staining protocol. Ready to use. Primary antibody incubation for 30 minutes at room temperature.

## Target

### Function

Together with KRT19, helps to link the contractile apparatus to dystrophin at the costameres of striated muscle.

### Tissue specificity

Observed in muscle fibers accumulating in the costameres of myoplasm at the sarcolemma membrane in structures that contain dystrophin and spectrin. Expressed in gingival mucosa and hard palate of the oral cavity.

### Involvement in disease

Cirrhosis

### Sequence similarities

Belongs to the intermediate filament family.

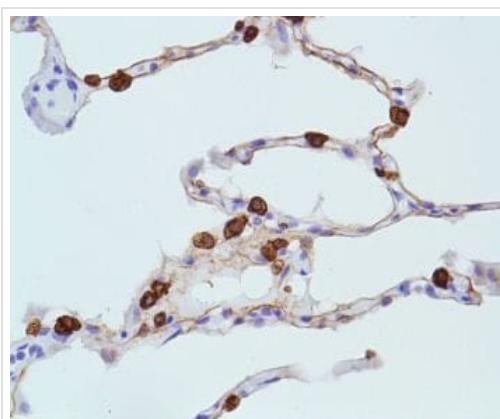
### Post-translational modifications

Phosphorylation on serine residues is enhanced during EGF stimulation and mitosis. Ser-74 phosphorylation plays an important role in keratin filament reorganization.  
O-glycosylated. O-GlcNAcylation at multiple sites increases solubility, and decreases stability by inducing proteasomal degradation.  
O-glycosylated (O-GlcNAcylated), in a cell cycle-dependent manner.

### Cellular localization

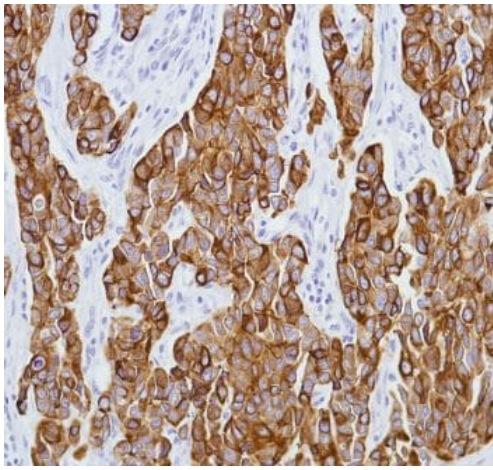
Cytoplasm. Nucleus, nucleoplasm. Nucleus matrix.

## Images



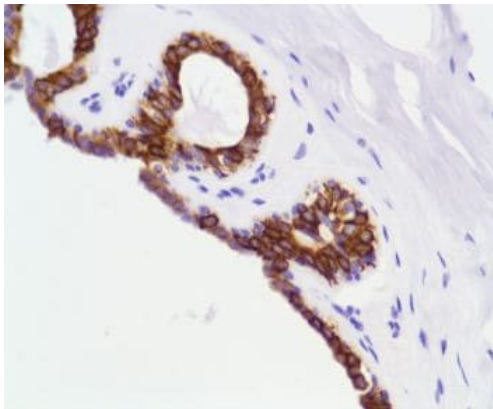
Formalin-fixed, paraffin-embedded human lung tissue stained for Cytokeratin 8 using ab228149 in immunohistochemical analysis.

Immunohistochemistry (Formalin/PFA-fixed paraffin-embedded sections) - Anti-Cytokeratin 8 antibody [SP102], prediluted (ab228149)



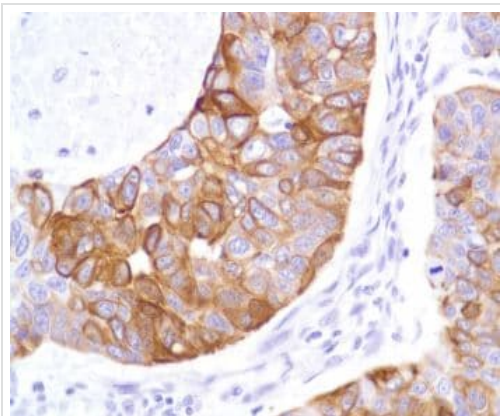
Formalin-fixed, paraffin-embedded human breast ductal carcinoma tissue stained for Cytokeratin 8 using ab228149 in immunohistochemical analysis.

Immunohistochemistry (Formalin/PFA-fixed paraffin-embedded sections) - Anti-Cytokeratin 8 antibody [SP102], prediluted (ab228149)



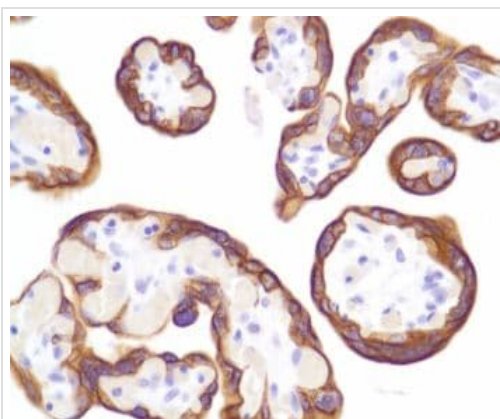
Formalin-fixed, paraffin-embedded human breast tissue stained for Cytokeratin 8 using ab228149 in immunohistochemical analysis.

Immunohistochemistry (Formalin/PFA-fixed paraffin-embedded sections) - Anti-Cytokeratin 8 antibody [SP102], prediluted (ab228149)



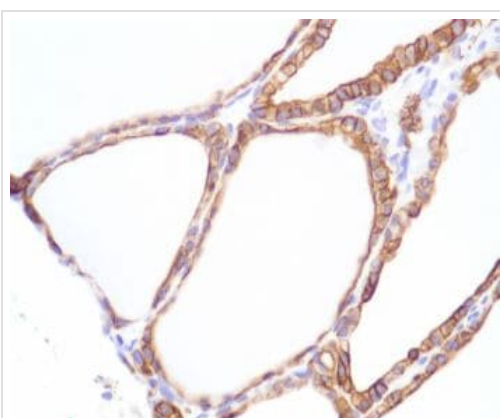
Immunohistochemistry (Formalin/PFA-fixed paraffin-embedded sections) - Anti-Cytokeratin 8 antibody [SP102], prediluted (ab228149)

Formalin-fixed, paraffin-embedded human lung squamous cell carcinoma tissue stained for Cytokeratin 8 using ab228149 in immunohistochemical analysis.



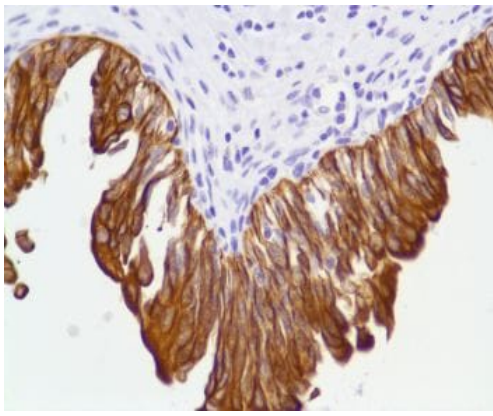
Immunohistochemistry (Formalin/PFA-fixed paraffin-embedded sections) - Anti-Cytokeratin 8 antibody [SP102], prediluted (ab228149)

Formalin-fixed, paraffin-embedded human placenta tissue stained for Cytokeratin 8 using ab228149 in immunohistochemical analysis.



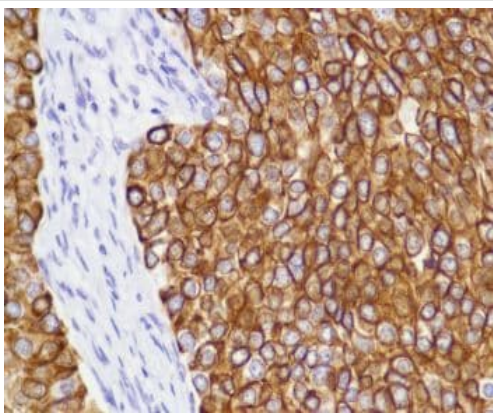
Immunohistochemistry (Formalin/PFA-fixed paraffin-embedded sections) - Anti-Cytokeratin 8 antibody [SP102], prediluted (ab228149)

Formalin-fixed, paraffin-embedded human thyroid tissue stained for Cytokeratin 8 using ab228149 in immunohistochemical analysis.



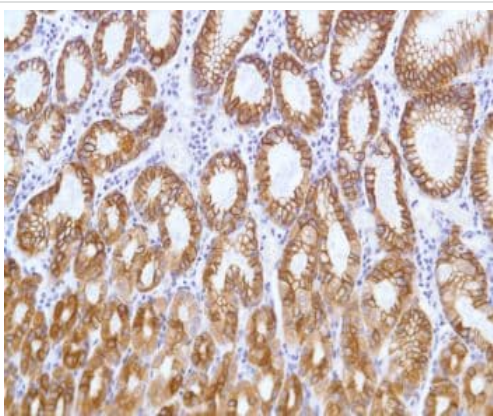
Formalin-fixed, paraffin-embedded human bladder tissue stained for Cytokeratin 8 using ab228149 in immunohistochemical analysis.

Immunohistochemistry (Formalin/PFA-fixed paraffin-embedded sections) - Anti-Cytokeratin 8 antibody [SP102], prediluted (ab228149)



Formalin-fixed, paraffin-embedded human bladder transitional cell carcinoma tissue stained for Cytokeratin 8 using ab228149 in immunohistochemical analysis.

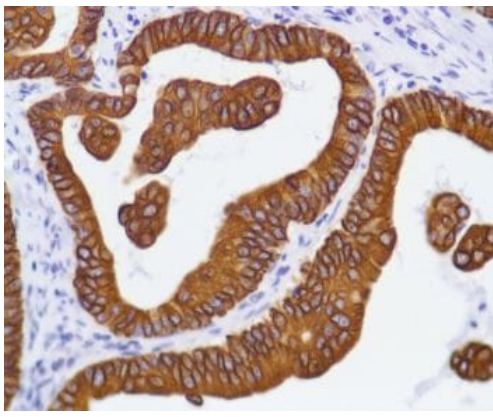
Immunohistochemistry (Formalin/PFA-fixed paraffin-embedded sections) - Anti-Cytokeratin 8 antibody [SP102], prediluted (ab228149)



Formalin-fixed, paraffin-embedded human stomach tissue stained for Cytokeratin 8 using ab228149 in immunohistochemical analysis.

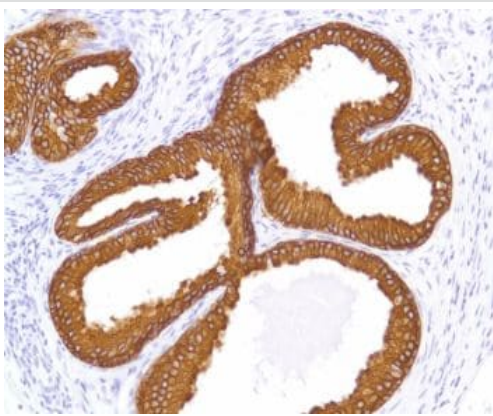
Immunohistochemistry (Formalin/PFA-fixed paraffin-embedded sections) - Anti-Cytokeratin 8 antibody [SP102], prediluted (ab228149)





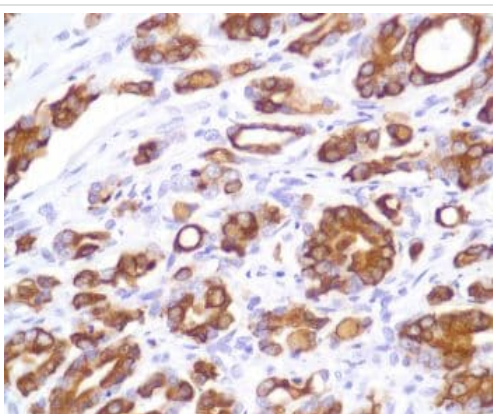
Formalin-fixed, paraffin-embedded human stomach adenocarcinoma tissue stained for Cytokeratin 8 using ab228149 in immunohistochemical analysis.

Immunohistochemistry (Formalin/PFA-fixed paraffin-embedded sections) - Anti-Cytokeratin 8 antibody [SP102], prediluted (ab228149)



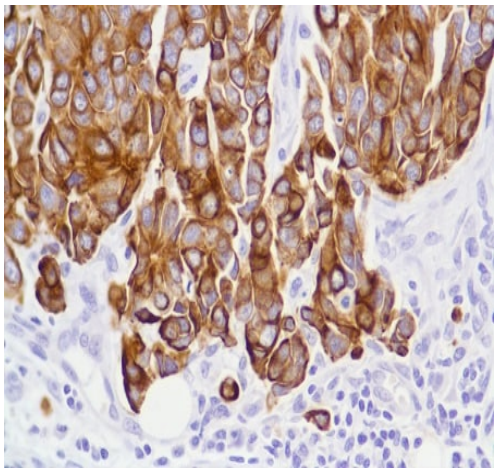
Formalin-fixed, paraffin-embedded human prostate tissue stained for Cytokeratin 8 using ab228149 in immunohistochemical analysis.

Immunohistochemistry (Formalin/PFA-fixed paraffin-embedded sections) - Anti-Cytokeratin 8 antibody [SP102], prediluted (ab228149)



Formalin-fixed, paraffin-embedded human prostate adenocarcinoma tissue stained for Cytokeratin 8 using ab228149 in immunohistochemical analysis.

Immunohistochemistry (Formalin/PFA-fixed paraffin-embedded sections) - Anti-Cytokeratin 8 antibody [SP102], prediluted (ab228149)



Formalin-fixed, paraffin-embedded human breast ductal carcinoma tissue stained for Cytokeratin 8 using ab228149 in immunohistochemical analysis.

Immunohistochemistry (Formalin/PFA-fixed paraffin-embedded sections) - Anti-Cytokeratin 8 antibody [SP102], prediluted (ab228149)

Why choose a recombinant antibody?



**Research with confidence**  
Consistent and reproducible results



**Long-term and scalable supply**  
Recombinant technology



**Success from the first experiment**  
Confirmed specificity



**Ethical standards compliant**  
Animal-free production

Anti-Cytokeratin 8 antibody [SP102], prediluted (ab228149)

**Please note:** All products are "FOR RESEARCH USE ONLY. NOT FOR USE IN DIAGNOSTIC PROCEDURES"

### Our Abpromise to you: Quality guaranteed and expert technical support

- Replacement or refund for products not performing as stated on the datasheet
- Valid for 12 months from date of delivery
- Response to your inquiry within 24 hours
- We provide support in Chinese, English, French, German, Japanese and Spanish
- Extensive multi-media technical resources to help you
- We investigate all quality concerns to ensure our products perform to the highest standards

If the product does not perform as described on this datasheet, we will offer a refund or replacement. For full details of the Abpromise,

please visit <https://www.abcam.com/abpromise> or contact our technical team.

#### **Terms and conditions**

---

- Guarantee only valid for products bought direct from Abcam or one of our authorized distributors