




Anti-Cytosolic Phospholipase A2 antibody ab104252

[1 References](#) [2 Images](#)

Overview

Product name	Anti-Cytosolic Phospholipase A2 antibody
Description	Goat polyclonal to Cytosolic Phospholipase A2
Host species	Goat
Tested applications	Suitable for: WB, ICC/IF, IHC-P
Species reactivity	Reacts with: Human Predicted to work with: Rat, Horse, Orangutan 
Immunogen	Synthetic peptide: C-QEKTFRQQRKEHIR , corresponding to internal sequence amino acids 153-166 of Human Phospholipase A2 (NP_077734.1). <div>  Run BLAST with  Run BLAST with </div>
Positive control	WB: HeLa cell lysates. ICC/IF: A549 cells
General notes	<p>The Life Science industry has been in the grips of a reproducibility crisis for a number of years. Abcam is leading the way in addressing this with our range of recombinant monoclonal antibodies and knockout edited cell lines for gold-standard validation. Please check that this product meets your needs before purchasing.</p> <p>If you have any questions, special requirements or concerns, please send us an inquiry and/or contact our Support team ahead of purchase. Recommended alternatives for this product can be found below, along with publications, customer reviews and Q&As</p>

Properties

Form	Liquid
Storage instructions	Shipped at 4°C. Upon delivery aliquot and store at -20°C. Avoid freeze / thaw cycles.
Storage buffer	pH: 7.30 Preservative: 0.02% Sodium azide Constituents: Tris buffered saline, 0.5% BSA
Purity	Immunogen affinity purified
Purification notes	ab104252 was purified from goat serum by ammonium sulphate precipitation followed by antigen affinity chromatography using the immunizing peptide.

Clonality	Polyclonal
Isotype	IgG

Applications

The Abpromise guarantee Our **Abpromise guarantee** covers the use of ab104252 in the following tested applications.

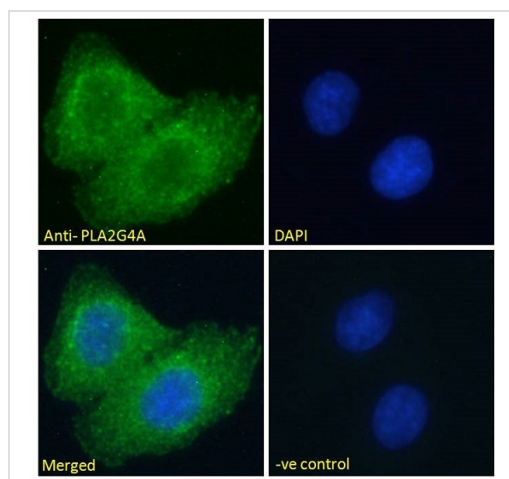
The application notes include recommended starting dilutions; optimal dilutions/concentrations should be determined by the end user.

Application	Abreviews	Notes
WB		Use a concentration of 0.3 - 1 µg/ml. Predicted molecular weight: 85 kDa. 1 hour primary incubation is recommended for this product.
ICC/IF		Use a concentration of 10 µg/ml.
IHC-P		Use a concentration of 3.75 µg/ml.

Target

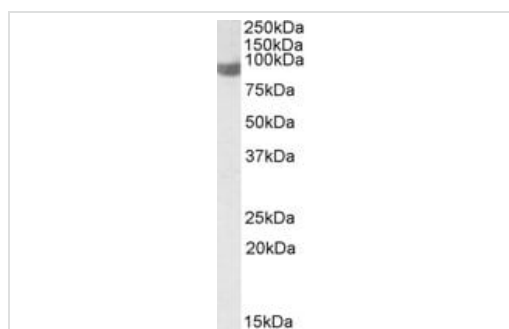
Function	Selectively hydrolyzes arachidonyl phospholipids in the sn-2 position releasing arachidonic acid. Together with its lysophospholipid activity, it is implicated in the initiation of the inflammatory response.
Tissue specificity	Expressed in various tissues such as macrophages, platelets, neutrophils, fibroblasts and lung endothelium.
Sequence similarities	Contains 1 C2 domain. Contains 1 PLA2c domain.
Domain	The N-terminal C2 domain associates with lipid membranes upon calcium binding. It modulates enzyme activity by presenting the active site to its substrate in response to elevations of cytosolic Ca(2+).
Post-translational modifications	Activated by phosphorylation at both Ser-505 and Ser-727.
Cellular localization	Cytoplasm. Cytoplasmic vesicle. Translocates to membrane vesicles in a calcium-dependent fashion.

Images



Immunocytochemistry/ Immunofluorescence - Anti-Cytosolic Phospholipase A2 antibody (ab104252)

Immunofluorescence analysis of paraformaldehyde fixed A549 cells, permeabilized with 0.15% Triton. Primary incubation with ab104252 for 1hr (10 µg/ml) followed by Alexa Fluor 488 secondary antibody (2 µg/ml) (green). The nuclear stain is DAPI (blue). Negative control: Unimmunized goat IgG (10 µg/ml) followed by Alexa Fluor 488 secondary antibody (2 µg/ml).



Western blot - Anti-Cytosolic Phospholipase A2 antibody (ab104252)

Anti-Cytosolic Phospholipase A2 antibody (ab104252) at 1 µg + HeLa cell lysate at 35 µg

Predicted band size: 85 kDa

Please note: All products are "FOR RESEARCH USE ONLY. NOT FOR USE IN DIAGNOSTIC PROCEDURES"

Our Abpromise to you: Quality guaranteed and expert technical support

- Replacement or refund for products not performing as stated on the datasheet
- Valid for 12 months from date of delivery
- Response to your inquiry within 24 hours
- We provide support in Chinese, English, French, German, Japanese and Spanish
- Extensive multi-media technical resources to help you

- We investigate all quality concerns to ensure our products perform to the highest standards

If the product does not perform as described on this datasheet, we will offer a refund or replacement. For full details of the Abpromise, please visit <https://www.abcam.com/abpromise> or contact our technical team.

Terms and conditions

- Guarantee only valid for products bought direct from Abcam or one of our authorized distributors