

## Product datasheet

# Anti-DCAF12 antibody ab106707

[2 Images](#)

### Overview

---

<b>Product name</b>	Anti-DCAF12 antibody
<b>Description</b>	Chicken polyclonal to DCAF12
<b>Host species</b>	Chicken
<b>Specificity</b>	At least two isoforms of DCAF12 are known to exist; ab106707 will recognize both isoforms. ab106707 is predicted to not crossreact with other DCAF12 family members.
<b>Tested applications</b>	<b>Suitable for:</b> WB, ICC
<b>Species reactivity</b>	<b>Reacts with:</b> Human
<b>Immunogen</b>	A 15 amino acid peptide near the C terminal end of Human DCAF12 (NP_056212).
<b>General notes</b>	<p>The Life Science industry has been in the grips of a reproducibility crisis for a number of years. Abcam is leading the way in addressing this with our range of recombinant monoclonal antibodies and knockout edited cell lines for gold-standard validation. Please check that this product meets your needs before purchasing.</p> <p>If you have any questions, special requirements or concerns, please send us an inquiry and/or contact our Support team ahead of purchase. Recommended alternatives for this product can be found below, along with publications, customer reviews and Q&amp;As</p>

### Properties

---

<b>Form</b>	Liquid
<b>Storage instructions</b>	Shipped at 4°C. Store at 4°C (stable for up to 12 months).
<b>Storage buffer</b>	pH: 7.2 Preservative: 0.02% Sodium azide Constituent: PBS
<b>Purity</b>	Immunogen affinity purified
<b>Clonality</b>	Polyclonal
<b>Isotype</b>	IgY

### Applications

---

**The Abpromise guarantee** Our **Abpromise guarantee** covers the use of ab106707 in the following tested applications.

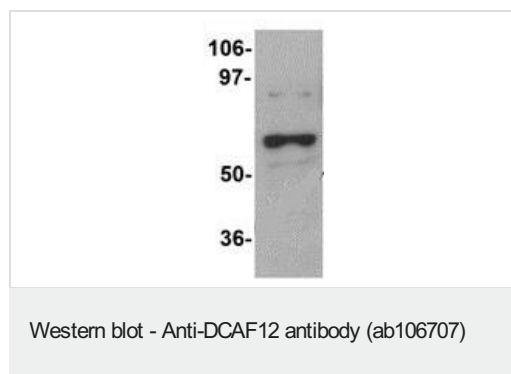
The application notes include recommended starting dilutions; optimal dilutions/concentrations should be determined by the end user.

Application	Abreviews	Notes
WB		Use a concentration of 1 - 2 µg/ml. Predicted molecular weight: 51 kDa.
ICC		Use a concentration of 2.5 µg/ml.

## Target

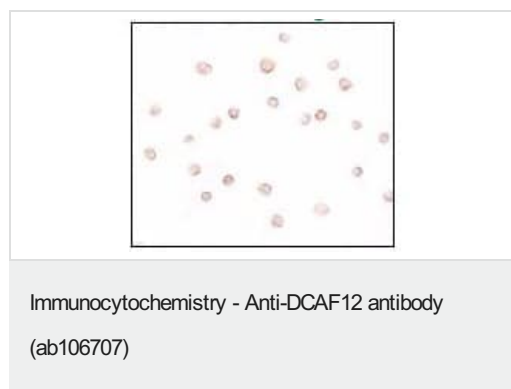
<b>Function</b>	May function as a substrate receptor for CUL4-DDB1 E3 ubiquitin-protein ligase complex.
<b>Tissue specificity</b>	Highly expressed in lung cancer tissues and some cancer cell lines. Restricted expression in normal testis.
<b>Pathway</b>	Protein modification; protein ubiquitination.
<b>Sequence similarities</b>	Belongs to the WD repeat DCAF12 family. Contains 4 WD repeats.
<b>Cellular localization</b>	Cytoplasm. Cytoplasm > cytoskeleton > centrosome.

## Images



Anti-DCAF12 antibody (ab106707) at 1 µg/ml + 293 cell lysate at 15 µg

**Predicted band size:** 51 kDa



ab106707, at 2.5 µg/ml, staining DCAF12 in 293 cells by Immunocytochemistry.

**Please note:** All products are "FOR RESEARCH USE ONLY. NOT FOR USE IN DIAGNOSTIC PROCEDURES"

## **Our Abpromise to you: Quality guaranteed and expert technical support**

---

- Replacement or refund for products not performing as stated on the datasheet
- Valid for 12 months from date of delivery
- Response to your inquiry within 24 hours
  
- We provide support in Chinese, English, French, German, Japanese and Spanish
- Extensive multi-media technical resources to help you
- We investigate all quality concerns to ensure our products perform to the highest standards

If the product does not perform as described on this datasheet, we will offer a refund or replacement. For full details of the Abpromise, please visit <https://www.abcam.com/abpromise> or contact our technical team.

## **Terms and conditions**

---

- Guarantee only valid for products bought direct from Abcam or one of our authorized distributors