




## Product datasheet

# Anti-DCK antibody ab186128

[1 References](#) [4 Images](#)

### Overview

---

<b>Product name</b>	Anti-DCK antibody
<b>Description</b>	Rabbit polyclonal to DCK
<b>Host species</b>	Rabbit
<b>Tested applications</b>	<b>Suitable for:</b> IHC-P, IP, WB
<b>Species reactivity</b>	<b>Reacts with:</b> Mouse, Human <b>Predicted to work with:</b> Rat, Chicken, Dog, Turkey, Pig, Xenopus laevis, Chimpanzee, Zebrafish, Rhesus monkey, Gorilla, Orangutan, Xenopus tropicalis 
<b>Immunogen</b>	Synthetic peptide within Human DCK aa 200 to the C-terminus. The exact immunogen sequence used to generate this antibody is proprietary information. If additional detail on the immunogen is needed to determine the suitability of the antibody for your needs, please <b>contact</b> our Scientific Support team to discuss your requirements. (NP_000779.1). Database link: <a href="#">P27707</a>  <a href="#">Run BLAST with</a>  <a href="#">Run BLAST with</a>
<b>Positive control</b>	WB: HeLa, 293T, Jurkat, TCMK-1 and NIH 3T3 whole cell lysates. IP: HeLa cell lysate. IHC-P: Human ovarian carcinoma and mouse teratoma tissues.
<b>General notes</b>	<p>The Life Science industry has been in the grips of a reproducibility crisis for a number of years. Abcam is leading the way in addressing this with our range of recombinant monoclonal antibodies and knockout edited cell lines for gold-standard validation. Please check that this product meets your needs before purchasing.</p> <p>If you have any questions, special requirements or concerns, please send us an inquiry and/or contact our Support team ahead of purchase. Recommended alternatives for this product can be found below, along with publications, customer reviews and Q&amp;As</p>

### Properties

---

<b>Form</b>	Liquid
<b>Storage instructions</b>	Shipped at 4°C. Store at +4°C short term (1-2 weeks). Upon delivery aliquot. Store at -20°C long term. Avoid freeze / thaw cycle.
<b>Storage buffer</b>	pH: 7 Preservative: 0.09% Sodium azide Constituent: 99% Tris citrate/phosphate

	pH 7 to 8
<b>Purity</b>	Immunogen affinity purified
<b>Purification notes</b>	ab186128 was affinity purified using an epitope specific to DCK immobilized on solid support.
<b>Clonality</b>	Polyclonal
<b>Isotype</b>	IgG

## Applications

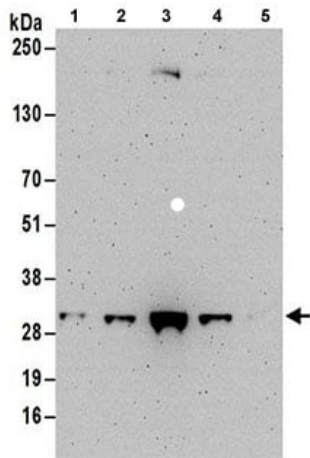
**The Abpromise guarantee** Our **Abpromise guarantee** covers the use of ab186128 in the following tested applications. The application notes include recommended starting dilutions; optimal dilutions/concentrations should be determined by the end user.

Application	Abreviews	Notes
IHC-P		1/1000.
IP		Use at 2-10 µg/mg of lysate.
WB		1/2000 - 1/10000. Predicted molecular weight: 31 kDa.

## Target

<b>Function</b>	Required for the phosphorylation of the deoxyribonucleosides deoxycytidine (dC), deoxyguanosine (dG) and deoxyadenosine (dA). Has broad substrate specificity, and does not display selectivity based on the chirality of the substrate. It is also an essential enzyme for the phosphorylation of numerous nucleoside analogs widely employed as antiviral and chemotherapeutic agents.
<b>Sequence similarities</b>	Belongs to the DCK/DGK family.
<b>Post-translational modifications</b>	Phosphorylated upon DNA damage, probably by ATM or ATR.
<b>Cellular localization</b>	Nucleus.

## Images



Western blot - Anti-DCK antibody (ab186128)

**All lanes :** Anti-DCK antibody (ab186128) at 0.1  $\mu\text{g/ml}$

**Lane 1 :** HeLa whole cell lysate

**Lane 2 :** 293T whole cell lysate

**Lane 3 :** Jurkat whole cell lysate

**Lane 4 :** TCMK-1 whole cell lysate

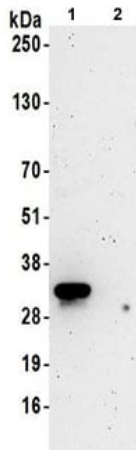
**Lane 5 :** NIH 3T3 whole cell lysate

Lysates/proteins at 50  $\mu\text{g}$  per lane.

Developed using the ECL technique.

**Predicted band size:** 31 kDa

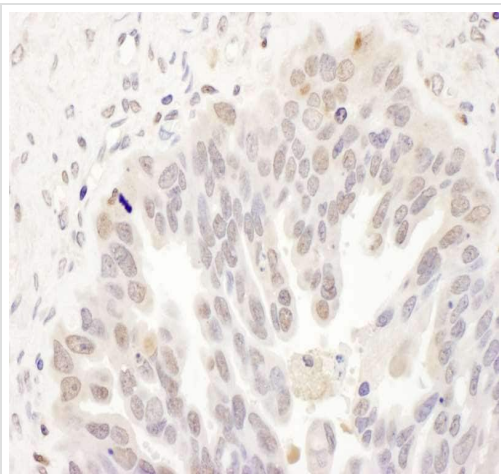
**Exposure time:** 3 minutes



Immunoprecipitation - Anti-DCK antibody (ab186128)

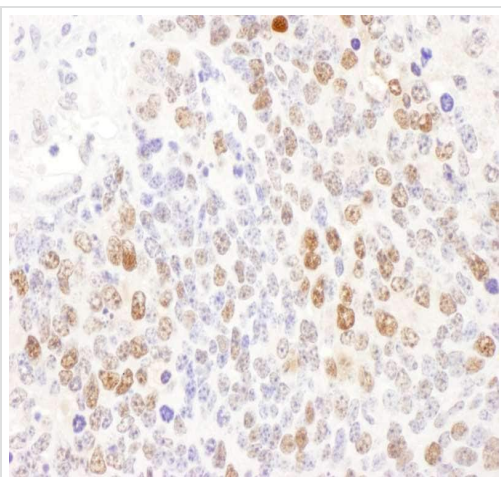
Detection of DCK in immunoprecipitates of HeLa whole cell lysate (1 mg for IP, 20% of IP loaded) using ab186128 at 6  $\mu\text{g}$  per reaction for IP (Lane 1) and at 1  $\mu\text{g/ml}$  for subsequent Western blot detection. Lane 2 represents control IgG IP.

Detection: Chemiluminescence with exposure time of 3 minutes.



Immunohistochemistry (Formalin/PFA-fixed paraffin-embedded sections) - Anti-DCK antibody (ab186128)

Immunohistochemical analysis of formalin-fixed, paraffin-embedded human ovarian carcinoma tissue labeling DCK with ab186128 at a 1/1000 dilution.



Immunohistochemistry (Formalin/PFA-fixed paraffin-embedded sections) - Anti-DCK antibody (ab186128)

Immunohistochemical analysis of formalin-fixed, paraffin-embedded mouse teratoma tissue labeling DCK with ab186128 at a 1/1000 dilution.

**Please note:** All products are "FOR RESEARCH USE ONLY. NOT FOR USE IN DIAGNOSTIC PROCEDURES"

### **Our Abpromise to you: Quality guaranteed and expert technical support**

---

- Replacement or refund for products not performing as stated on the datasheet
- Valid for 12 months from date of delivery
- Response to your inquiry within 24 hours
  
- We provide support in Chinese, English, French, German, Japanese and Spanish
- Extensive multi-media technical resources to help you
- We investigate all quality concerns to ensure our products perform to the highest standards

If the product does not perform as described on this datasheet, we will offer a refund or replacement. For full details of the Abpromise, please visit <https://www.abcam.com/abpromise> or contact our technical team.

## Terms and conditions

---

- Guarantee only valid for products bought direct from Abcam or one of our authorized distributors