



## Product datasheet

### Anti-DCK antibody [OTI16E12] ab118994

4 Images

#### Overview

<b>Product name</b>	Anti-DCK antibody [OTI16E12]
<b>Description</b>	Mouse monoclonal [OTI16E12] to DCK
<b>Host species</b>	Mouse
<b>Tested applications</b>	<b>Suitable for:</b> Flow Cyt (Intra), WB
<b>Species reactivity</b>	<b>Reacts with:</b> Human
<b>Immunogen</b>	Recombinant full length protein corresponding to Human DCK aa 1-300. (NP_000779) produced in HEK293T cells. Database link: <a href="#">P27707</a>
	<div>  <a href="#">Run BLAST with</a>  <a href="#">Run BLAST with</a> </div>
<b>Positive control</b>	WB: HEK293T cells transfected with pCMV6-ENTRY DCK. Flow Cyt (Intra): HEK-293T transfected with DCK, HeLa and Jurkat cells.
<b>General notes</b>	<p>The clone number has been updated from 16E12 to OTI16E12, both clone numbers name the same clone.</p> <p>The Life Science industry has been in the grips of a reproducibility crisis for a number of years. Abcam is leading the way in addressing this with our range of recombinant monoclonal antibodies and knockout edited cell lines for gold-standard validation. Please check that this product meets your needs before purchasing.</p> <p>If you have any questions, special requirements or concerns, please send us an inquiry and/or contact our Support team ahead of purchase. Recommended alternatives for this product can be found below, along with publications, customer reviews and Q&amp;As</p>

#### Properties

<b>Form</b>	Liquid
<b>Storage instructions</b>	Shipped at 4°C. Store at +4°C short term (1-2 weeks). Upon delivery aliquot. Store at -20°C. Avoid freeze / thaw cycle.
<b>Storage buffer</b>	pH: 7.30 Preservative: 0.02% Sodium azide Constituents: PBS, 1% BSA, 50% Glycerol
<b>Purity</b>	Affinity purified
<b>Purification notes</b>	Purified from cell culture supernatant by affinity chromatography

<b>Clonality</b>	Monoclonal
<b>Clone number</b>	OT116E12
<b>Isotype</b>	IgG1

## Applications

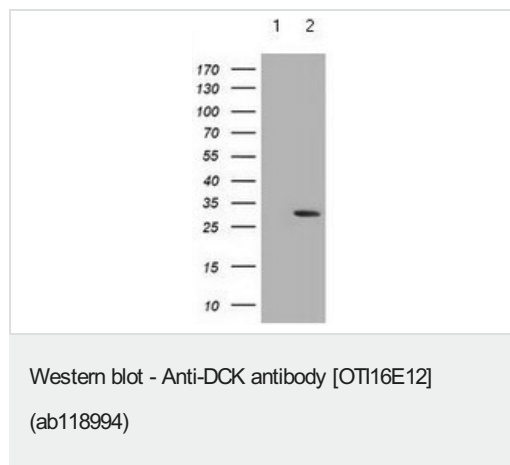
**The Abpromise guarantee** Our **Abpromise guarantee** covers the use of ab118994 in the following tested applications. The application notes include recommended starting dilutions; optimal dilutions/concentrations should be determined by the end user.

Application	Abreviews	Notes
<b>Flow Cyt (Intra)</b>		1/100. <b>ab170190</b> - Mouse monoclonal IgG1, is suitable for use as an isotype control with this antibody.
<b>WB</b>		1/2000. Predicted molecular weight: 31 kDa.

## Target

<b>Function</b>	Required for the phosphorylation of the deoxyribonucleosides deoxycytidine (dC), deoxyguanosine (dG) and deoxyadenosine (dA). Has broad substrate specificity, and does not display selectivity based on the chirality of the substrate. It is also an essential enzyme for the phosphorylation of numerous nucleoside analogs widely employed as antiviral and chemotherapeutic agents.
<b>Sequence similarities</b>	Belongs to the DCK/DGK family.
<b>Post-translational modifications</b>	Phosphorylated upon DNA damage, probably by ATM or ATR.
<b>Cellular localization</b>	Nucleus.

## Images



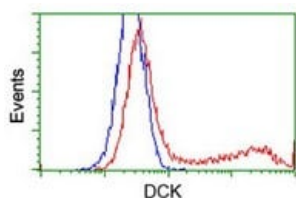
**All lanes** : Anti-DCK antibody [OT116E12] (ab118994) at 1/2000 dilution

**Lane 1** : HEK-293T (human epithelial cell line from embryonic kidney transformed with large T antigen) cell lysate transfected with pCMV6-ENTRY control

**Lane 2** : HEK-293T cells transfected with pCMV6-ENTRY DCK cDNA

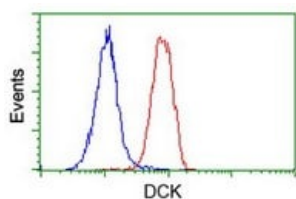
Lysates/proteins at 5 µg per lane.

**Predicted band size:** 31 kDa



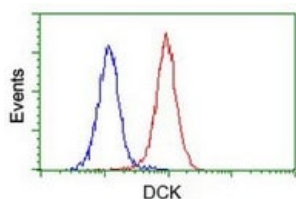
Flow Cytometry (Intracellular) - Anti-DCK antibody  
[OT16E12] (ab118994)

Flow cytometric analysis of HEK-293T (human epithelial cell line from embryonic kidney transformed with large T antigen) cells transfected with either DCK overexpress plasmid (Red) or empty vector control plasmid (Blue) were stained for DCK using ab118994 at 1/100 dilution.



Flow Cytometry (Intracellular) - Anti-DCK antibody  
[OT16E12] (ab118994)

Flow cytometric analysis of HeLa (human epithelial cell line from cervix adenocarcinoma) cells stained for DCK using ab118994 (Red) compared to a nonspecific negative control antibody (Blue).



Flow Cytometry (Intracellular) - Anti-DCK antibody  
[OT16E12] (ab118994)

Flow cytometric analysis of Jurkat (human T cell leukemia cell line from peripheral blood) cells using ab118994 at 1/100 (Red), compared to a nonspecific negative control antibody (Blue).

**Please note:** All products are "FOR RESEARCH USE ONLY. NOT FOR USE IN DIAGNOSTIC PROCEDURES"

### Our Abpromise to you: Quality guaranteed and expert technical support

- Replacement or refund for products not performing as stated on the datasheet
- Valid for 12 months from date of delivery
- Response to your inquiry within 24 hours
- We provide support in Chinese, English, French, German, Japanese and Spanish
- Extensive multi-media technical resources to help you
- We investigate all quality concerns to ensure our products perform to the highest standards

If the product does not perform as described on this datasheet, we will offer a refund or replacement. For full details of the Abpromise, please visit <https://www.abcam.com/abpromise> or contact our technical team.

### Terms and conditions

- Guarantee only valid for products bought direct from Abcam or one of our authorized distributors