


Anti-DDX24 antibody ab84392

2 Images

Overview

| | |
|----------------------------|---|
| Product name | Anti-DDX24 antibody |
| Description | Rabbit polyclonal to DDX24 |
| Host species | Rabbit |
| Tested applications | Suitable for: IHC-P |
| Species reactivity | Reacts with: Human Predicted to work with: Dog, Chimpanzee, Rhesus monkey, Gorilla, Orangutan  |
| Immunogen | Synthetic peptide corresponding residues 800 and the C-terminus (residue 859) of human DDX24 (NP_001030312.1). |
| Positive control | human ovarian tumor, human prostate adenocarcinoma. |
| General notes | <p>The Life Science industry has been in the grips of a reproducibility crisis for a number of years. Abcam is leading the way in addressing this with our range of recombinant monoclonal antibodies and knockout edited cell lines for gold-standard validation. Please check that this product meets your needs before purchasing.</p> <p>If you have any questions, special requirements or concerns, please send us an inquiry and/or contact our Support team ahead of purchase. Recommended alternatives for this product can be found below, along with publications, customer reviews and Q&As</p> |

Properties

| | |
|-----------------------------|---|
| Form | Liquid |
| Storage instructions | Shipped at 4°C. Upon delivery aliquot and store at -20°C. Avoid freeze / thaw cycles. |
| Storage buffer | pH: 6.8 Preservative: 0.09% Sodium azide Constituents: 0.1% BSA, Tris buffered saline |
| Purity | Immunogen affinity purified |
| Clonality | Polyclonal |
| Isotype | IgG |

Applications

The Abpromise guarantee

Our **Abpromise guarantee** covers the use of ab84392 in the following tested applications.

The application notes include recommended starting dilutions; optimal dilutions/concentrations should be determined by the end user.

| Application | Abreviews | Notes |
|-------------|-----------|-------|
| IHC-P | | |

Application notes

IHC-P: 1/100 - 1/500.

Epitope exposure with citrate buffer will enhance staining.

Not yet tested in other applications.

Optimal dilutions/concentrations should be determined by the end user.

Target

Function

ATP-dependent RNA helicase.

Tissue specificity

Ubiquitous. Most abundant in heart and brain, but with lowest levels in thymus and small intestine.

Sequence similarities

Belongs to the DEAD box helicase family. DDX24/MAK5 subfamily.

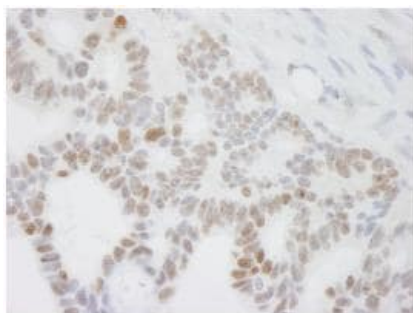
Contains 1 helicase ATP-binding domain.

Contains 1 helicase C-terminal domain.

Post-translational modifications

Phosphorylated upon DNA damage, probably by ATM or ATR.

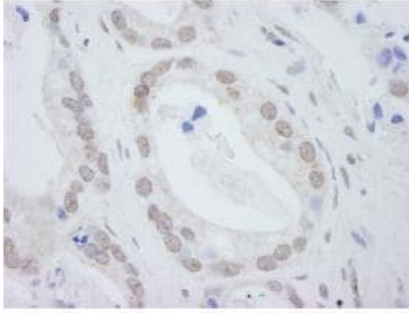
Images



ab84392, at a 1/250 dilution, staining DDX24 in formalin fixed, paraffin embedded human ovarian tumor tissue by Immunohistochemistry.

Detection: DAB staining.

Immunohistochemistry (Formalin/PFA-fixed paraffin-embedded sections) - Anti-DDX24 antibody (ab84392)



Immunohistochemistry (Formalin/PFA-fixed paraffin-embedded sections) - Anti-DDX24 antibody (ab84392)

ab84392, at a 1/250 dilution, staining DDX24 in formalin fixed, paraffin embedded human human prostate adenocarcinoma tissue by Immunohistochemistry.
Detection: DAB staining.

Please note: All products are "FOR RESEARCH USE ONLY. NOT FOR USE IN DIAGNOSTIC PROCEDURES"

Our Abpromise to you: Quality guaranteed and expert technical support

- Replacement or refund for products not performing as stated on the datasheet
- Valid for 12 months from date of delivery
- Response to your inquiry within 24 hours
- We provide support in Chinese, English, French, German, Japanese and Spanish
- Extensive multi-media technical resources to help you
- We investigate all quality concerns to ensure our products perform to the highest standards

If the product does not perform as described on this datasheet, we will offer a refund or replacement. For full details of the Abpromise, please visit <https://www.abcam.com/abpromise> or contact our technical team.

Terms and conditions

- Guarantee only valid for products bought direct from Abcam or one of our authorized distributors