

Product datasheet

Anti-DDX3 antibody ab37160

★★★★★ [1 Abreviews](#) [5 References](#) [2 Images](#)

Overview

Product name	Anti-DDX3 antibody
Description	Rabbit polyclonal to DDX3
Host species	Rabbit
Specificity	Detects both DDX3 and DBY
Tested applications	Suitable for: WB, ICC/IF
Species reactivity	Reacts with: Human
Immunogen	Synthetic peptide, corresponding to a 16 amino acid peptide from near the N terminus of Human DDX3
Positive control	HepG2 (Human hepatocellular liver carcinoma cell line) whole cell lysate
General notes	<p>The Life Science industry has been in the grips of a reproducibility crisis for a number of years. Abcam is leading the way in addressing this with our range of recombinant monoclonal antibodies and knockout edited cell lines for gold-standard validation. Please check that this product meets your needs before purchasing.</p> <p>If you have any questions, special requirements or concerns, please send us an inquiry and/or contact our Support team ahead of purchase. Recommended alternatives for this product can be found below, along with publications, customer reviews and Q&As</p>

Properties

Form	Liquid
Storage instructions	Shipped at 4°C. Store at +4°C.
Storage buffer	pH: 7.2 Preservative: 0.02% Sodium azide Constituent: PBS
Purity	Immunogen affinity purified
Clonality	Polyclonal
Isotype	IgG

Applications

The Abpromise guarantee

Our **Abpromise guarantee** covers the use of ab37160 in the following tested applications.

The application notes include recommended starting dilutions; optimal dilutions/concentrations should be determined by the end user.

Application	Abreviews	Notes
WB	★★★★★ (1)	Use a concentration of 0.5 - 1 µg/ml. Detects a band of approximately 73 kDa (predicted molecular weight: 73 kDa).
ICC/IF		Use a concentration of 10 µg/ml.

Target

Function

ATP-dependent RNA helicase. Acts as a cofactor for XPO1-mediated nuclear export of incompletely spliced HIV-1 Rev RNAs. Also involved in HIV-1 replication. Interacts specifically with hepatitis C virus core protein resulting in a change in intracellular location.

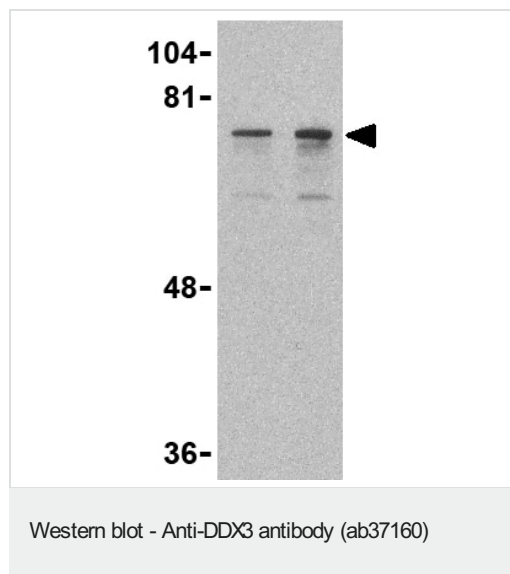
Sequence similarities

Belongs to the DEAD box helicase family. DDX3/DED1 subfamily.
Contains 1 helicase ATP-binding domain.
Contains 1 helicase C-terminal domain.

Cellular localization

Nucleus speckle. Cytoplasm. Located predominantly in nuclear speckles and, at low levels, throughout the cytoplasm. Located to the outer side of nuclear pore complexes (NPC). Shuttles between the nucleus and the cytoplasm in a XPO1-dependent manner.

Images



Lane 1 : Anti-DDX3 antibody (ab37160) at 0.5 µg/ml

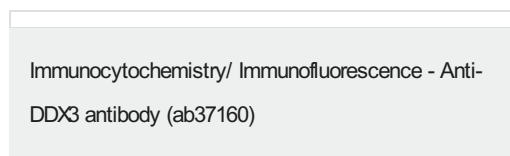
Lane 2 : Anti-DDX3 antibody (ab37160) at 1 µg/ml

All lanes : Human HepG2 cell lysate

Lysates/proteins at 15 µg per lane.

Predicted band size: 73 kDa

Observed band size: 73 kDa



Immunofluorescence of DDX3 in HepG2 cells using ab37160 at 20 µg/ml.

Please note: All products are "FOR RESEARCH USE ONLY. NOT FOR USE IN DIAGNOSTIC PROCEDURES"

Our Abpromise to you: Quality guaranteed and expert technical support

- Replacement or refund for products not performing as stated on the datasheet
- Valid for 12 months from date of delivery
- Response to your inquiry within 24 hours

- We provide support in Chinese, English, French, German, Japanese and Spanish
- Extensive multi-media technical resources to help you
- We investigate all quality concerns to ensure our products perform to the highest standards

If the product does not perform as described on this datasheet, we will offer a refund or replacement. For full details of the Abpromise, please visit <https://www.abcam.com/abpromise> or contact our technical team.

Terms and conditions

- Guarantee only valid for products bought direct from Abcam or one of our authorized distributors