


Anti-DECR1 antibody ab95965

2 Images

Overview

Product name	Anti-DECR1 antibody
Description	Rabbit polyclonal to DECR1
Host species	Rabbit
Tested applications	Suitable for: WB, ICC/IF
Species reactivity	Reacts with: Human Predicted to work with: Cow 
Immunogen	Recombinant fragment, corresponding to a region within amino acids 1-305 of Human DECR1 (NP_001350).
Positive control	293T, A431, H1299, HeLa, MOLT4 and Raji cell lysates. HepG2 whole cell lysate (ab7900). HeLa cells.
General notes	<p>The Life Science industry has been in the grips of a reproducibility crisis for a number of years. Abcam is leading the way in addressing this with our range of recombinant monoclonal antibodies and knockout edited cell lines for gold-standard validation. Please check that this product meets your needs before purchasing.</p> <p>If you have any questions, special requirements or concerns, please send us an inquiry and/or contact our Support team ahead of purchase. Recommended alternatives for this product can be found below, along with publications, customer reviews and Q&As</p>

Properties

Form	Liquid
Storage instructions	Shipped at 4°C. Upon delivery aliquot. Store at -20°C or -80°C. Avoid freeze / thaw cycle.
Storage buffer	pH: 7.00 Preservative: 0.01% Thimerosal (merthiolate) Constituents: 1.21% Tris, 0.75% Glycine, 10% Glycerol (glycerin, glycerine)
Purity	Immunogen affinity purified
Clonality	Polyclonal
Isotype	IgG

Applications

The Abpromise guarantee

Our **Abpromise guarantee** covers the use of ab95965 in the following tested applications.

The application notes include recommended starting dilutions; optimal dilutions/concentrations should be determined by the end user.

Application	Abreviews	Notes
WB		1/500 - 1/3000. Predicted molecular weight: 36 kDa.
ICC/IF		1/100 - 1/200.

Target

Function

Auxiliary enzyme of beta-oxidation. It participates in the metabolism of unsaturated fatty enoyl-CoA esters having double bonds in both even- and odd-numbered positions. Catalyzes the NADP-dependent reduction of 2,4-dienoyl-CoA to yield trans-3-enoyl-CoA.

Tissue specificity

Heart = liver = pancreas > kidney >> skeletal muscle = lung.

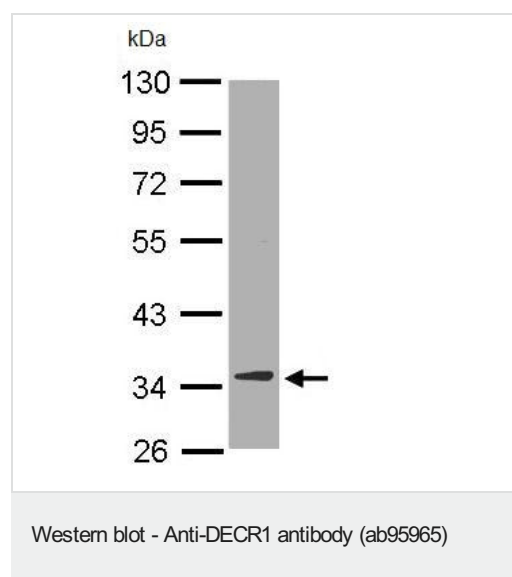
Sequence similarities

Belongs to the short-chain dehydrogenases/reductases (SDR) family. 2,4-dienoyl-CoA reductase subfamily.

Cellular localization

Mitochondrion.

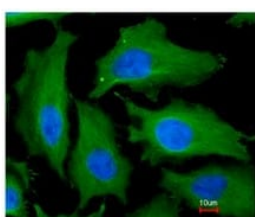
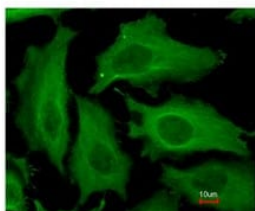
Images



Anti-DECR1 antibody (ab95965) at 1/10000 dilution + HepG2 whole cell lysate at 30 µg

Predicted band size: 36 kDa

10% SDS PAGE



ab95965 at 1/200 dilution staining DECRC1 in paraformaldehyde-fixed HeLa cells by immunofluorescence. ab95965 was merged with a DNA probe in the lower image.

Immunocytochemistry/ Immunofluorescence - Anti-DECRC1 antibody (ab95965)

Please note: All products are "FOR RESEARCH USE ONLY. NOT FOR USE IN DIAGNOSTIC PROCEDURES"

Our Abpromise to you: Quality guaranteed and expert technical support

- Replacement or refund for products not performing as stated on the datasheet
- Valid for 12 months from date of delivery
- Response to your inquiry within 24 hours
- We provide support in Chinese, English, French, German, Japanese and Spanish
- Extensive multi-media technical resources to help you
- We investigate all quality concerns to ensure our products perform to the highest standards

If the product does not perform as described on this datasheet, we will offer a refund or replacement. For full details of the Abpromise, please visit <https://www.abcam.com/abpromise> or contact our technical team.

Terms and conditions

- Guarantee only valid for products bought direct from Abcam or one of our authorized distributors