


Product datasheet

Anti-delta 1 Catenin/CAS antibody ab72039

[1 References](#) [3 Images](#)

Overview

Product name	Anti-delta 1 Catenin/CAS antibody
Description	Rabbit polyclonal to delta 1 Catenin/CAS
Host species	Rabbit
Tested applications	Suitable for: IHC-P, WB, IP
Species reactivity	Reacts with: Mouse, Human Predicted to work with: Rat, Rabbit, Horse, Guinea pig, Dog, Pig, Chimpanzee, Rhesus monkey, Gorilla, Orangutan, Platypus, Elephant 
Immunogen	Synthetic peptide corresponding to Human delta 1 Catenin/CAS aa 75-125. Database link: NP_001322.1
Positive control	HeLa, 293T and NIH3T3 whole cell lysates.
General notes	<p>The Life Science industry has been in the grips of a reproducibility crisis for a number of years. Abcam is leading the way in addressing this with our range of recombinant monoclonal antibodies and knockout edited cell lines for gold-standard validation. Please check that this product meets your needs before purchasing.</p> <p>If you have any questions, special requirements or concerns, please send us an inquiry and/or contact our Support team ahead of purchase. Recommended alternatives for this product can be found below, along with publications, customer reviews and Q&As</p>

Properties

Form	Liquid
Storage instructions	Shipped at 4°C. Upon delivery aliquot and store at -20°C. Avoid freeze / thaw cycles.
Storage buffer	pH: 6.8 Preservative: 0.09% Sodium azide Constituents: 0.1% BSA, Tris buffered saline
Purity	Immunogen affinity purified
Purification notes	ab72039 was affinity purified using an epitope specific to delta 1 Catenin/CAS immobilized on solid support.
Clonality	Polyclonal
Isotype	IgG

Applications

The Abpromise guarantee

Our **Abpromise guarantee** covers the use of ab72039 in the following tested applications.

The application notes include recommended starting dilutions; optimal dilutions/concentrations should be determined by the end user.

Application	Abreviews	Notes
IHC-P		1/200 - 1/1000. Epitope retrieval with Tris-EDTA pH 9.0 is recommended.
WB		1/2000 - 1/10000. Detects a band of approximately 117 kDa (predicted molecular weight: 108 kDa).
IP		Use at 2-5 µg/mg of lysate.

Target

Function

Binds to and inhibits the transcriptional repressor ZBTB33, which may lead to activation of target genes of the Wnt signaling pathway (By similarity). May associate with and regulate the cell adhesion properties of both C- and E-cadherins. Implicated both in cell transformation by SRC and in ligand-induced receptor signaling through the EGF, PDGF, CSF-1 and ERBB2 receptors. Promotes GLIS2 C-terminal cleavage.

Tissue specificity

Expressed in vascular endothelium.

Sequence similarities

Belongs to the beta-catenin family.

Contains 10 ARM repeats.

Domain

A possible nuclear localization signal exists in all isoforms where Asp-626--631-Arg are deleted.

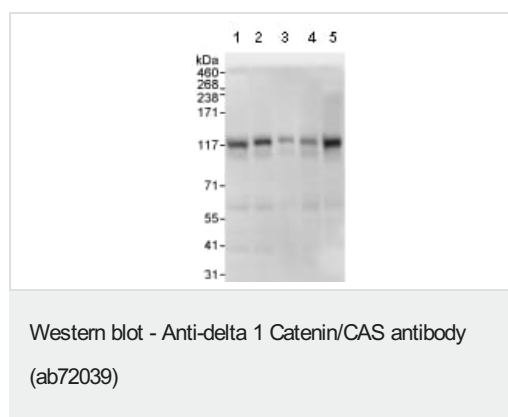
Post-translational modifications

Phosphorylated by protein-tyrosine kinases. Dephosphorylated by PTPRJ.

Cellular localization

Cytoplasm. Nucleus. Cell membrane. Interaction with GLIS2 promotes nuclear translocation (By similarity). NANOS1 induces its translocation from sites of cell-cell contact to the cytoplasm.

Images



All lanes : Anti-delta 1 Catenin/CAS antibody (ab72039) at 0.04 µg/ml

Lane 1 : HeLa whole cell lysate at 50 µg

Lane 2 : HeLa whole cell lysate at 15 µg

Lane 3 : HeLa whole cell lysate at 5 µg

Lane 4 : 293T whole cell lysate at 50 µg

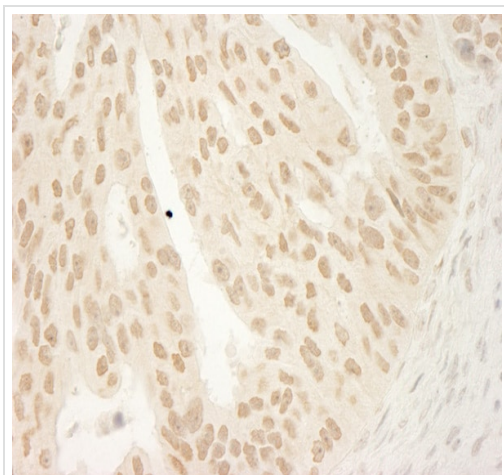
Lane 5 : NIH3T3 whole cell lysate at 50 µg

Developed using the ECL technique.

Predicted band size: 108 kDa

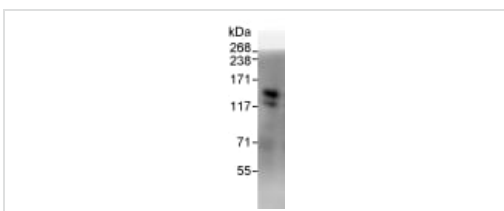
Observed band size: 117 kDa

Exposure time: 3 seconds



Immunohistochemistry (Formalin/PFA-fixed paraffin-embedded sections) - Anti-delta 1 Catenin/CAS antibody (ab72039)

Immunohistochemistry (Formalin/PFA-fixed paraffin-embedded sections) analysis of human ovarian carcinoma tissue labelling delta 1 Catenin/CAS with ab72039 at 1/1000 (0.2µg/ml). Detection: DAB.



Immunoprecipitation - Anti-delta 1 Catenin/CAS antibody (ab72039)

Detection of delta 1 Catenin/CAS by Western Blot of Immunoprecipitate.

ab72039 at 1µg/ml staining delta 1 Catenin/CAS in HeLa whole cell lysate immunoprecipitated using ab72039 at 3µg/mg lysate (1 mg/IP; 20% of IP loaded/lane).

Detection: Chemiluminescence with exposure time of 1 second.

Please note: All products are "FOR RESEARCH USE ONLY. NOT FOR USE IN DIAGNOSTIC PROCEDURES"

Our Abpromise to you: Quality guaranteed and expert technical support

- Replacement or refund for products not performing as stated on the datasheet
- Valid for 12 months from date of delivery
- Response to your inquiry within 24 hours
- We provide support in Chinese, English, French, German, Japanese and Spanish
- Extensive multi-media technical resources to help you
- We investigate all quality concerns to ensure our products perform to the highest standards

If the product does not perform as described on this datasheet, we will offer a refund or replacement. For full details of the Abpromise, please visit <https://www.abcam.com/abpromise> or contact our technical team.

Terms and conditions

- Guarantee only valid for products bought direct from Abcam or one of our authorized distributors