

## Product datasheet

# Anti-delta 1 Catenin/CAS antibody [SP63] - C-terminal ab227638

Recombinant RabMAb

14 Images

### Overview

<b>Product name</b>	Anti-delta 1 Catenin/CAS antibody [SP63] - C-terminal
<b>Description</b>	Rabbit monoclonal [SP63] to delta 1 Catenin/CAS - C-terminal
<b>Host species</b>	Rabbit
<b>Tested applications</b>	<b>Suitable for:</b> IHC-P, Flow Cyt (Intra), ICC/IF
<b>Species reactivity</b>	<b>Reacts with:</b> Human
<b>Immunogen</b>	Synthetic peptide. This information is proprietary to Abcam and/or its suppliers.
<b>Positive control</b>	IHC-P: Human breast carcinoma, breast ductal cell carcinoma, bladder transitional cell carcinoma, cervical squamous cell carcinoma, cervix, colon adenocarcinoma, endometrium adenocarcinoma, hepatocellular carcinoma, stomach adenocarcinoma, prostate adenocarcinoma and esophagus tissues. ICC/IF: A431 cells. Flow Cyt (Intra): A431 cells.
<b>General notes</b>	<p>This product is a recombinant monoclonal antibody, which offers several advantages including:</p> <ul style="list-style-type: none"> <li>- High batch-to-batch consistency and reproducibility</li> <li>- Improved sensitivity and specificity</li> <li>- Long-term security of supply</li> <li>- Animal-free production</li> </ul> <p>For more information <a href="#">see here</a>.</p> <p><b>This product is FOR RESEARCH USE ONLY. For commercial use, please contact <a href="mailto:partnerships@abcam.com">partnerships@abcam.com</a>.</b></p>

### Properties

<b>Form</b>	Liquid
<b>Storage instructions</b>	Shipped at 4°C. Store at +4°C short term (1-2 weeks). Upon delivery aliquot. Store at -20°C long term. Avoid freeze / thaw cycle.
<b>Storage buffer</b>	<p>pH: 7.60</p> <p>Preservative: 0.1% Sodium azide</p> <p>Constituents: PBS, 1% BSA</p>
<b>Purity</b>	Protein A/G purified

<b>Purification notes</b>	Purified from TCS by protein A/G.
<b>Clonality</b>	Monoclonal
<b>Clone number</b>	SP63
<b>Isotype</b>	IgG

## Applications

**The Abpromise guarantee** Our **Abpromise guarantee** covers the use of ab227638 in the following tested applications.

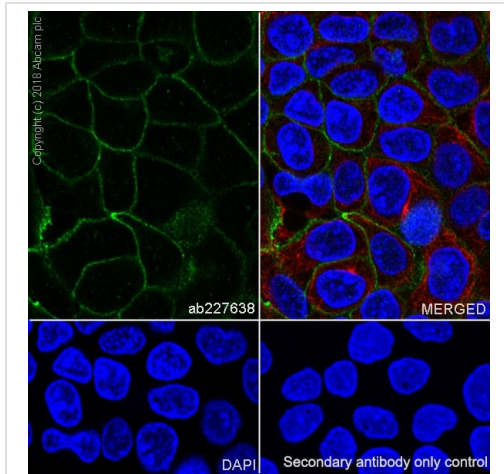
The application notes include recommended starting dilutions; optimal dilutions/concentrations should be determined by the end user.

Application	Abreviews	Notes
IHC-P		1/100. Perform heat mediated antigen retrieval with citrate buffer pH 6 before commencing with IHC staining protocol. Primary antibody incubation for 30 minutes at room temperature.
Flow Cyt (Intra)		Use at an assay dependent concentration.
ICC/IF		Use at an assay dependent concentration.

## Target

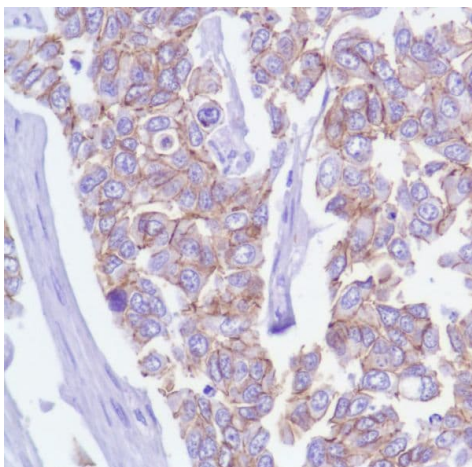
<b>Function</b>	Binds to and inhibits the transcriptional repressor ZBTB33, which may lead to activation of target genes of the Wnt signaling pathway (By similarity). May associate with and regulate the cell adhesion properties of both C- and E-cadherins. Implicated both in cell transformation by SRC and in ligand-induced receptor signaling through the EGF, PDGF, CSF-1 and ERBB2 receptors. Promotes GLIS2 C-terminal cleavage.
<b>Tissue specificity</b>	Expressed in vascular endothelium.
<b>Sequence similarities</b>	Belongs to the beta-catenin family. Contains 10 ARM repeats.
<b>Domain</b>	A possible nuclear localization signal exists in all isoforms where Asp-626--631-Arg are deleted.
<b>Post-translational modifications</b>	Phosphorylated by protein-tyrosine kinases. Dephosphorylated by PTPRJ.
<b>Cellular localization</b>	Cytoplasm. Nucleus. Cell membrane. Interaction with GLIS2 promotes nuclear translocation (By similarity). NANOS1 induces its translocation from sites of cell-cell contact to the cytoplasm.

## Images



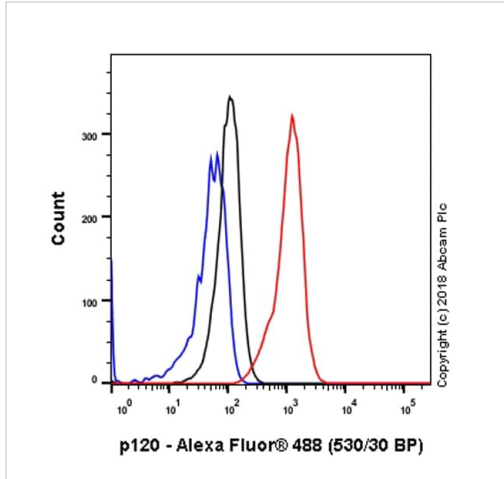
Immunocytochemistry/ Immunofluorescence - Anti-delta 1 Catenin/CAS antibody [SP63] - C-terminal (ab227638)

Immunocytochemistry/ Immunofluorescence analysis of A431 (human epidermoid carcinoma epithelial cell) cells labeling delta 1 Catenin/CAS with purified ab227638. Cells were fixed in 100% Methanol. Cells were counterstained with **ab195889** Anti-alpha Tubulin antibody [DM1A] - Microtubule Marker (Alexa Fluor® 594). Goat anti rabbit IgG (Alexa Fluor® 488, **ab150077**) was used as the secondary antibody. DAPI was used as nuclear counterstain. PBS instead of the primary antibody was used as the secondary antibody only control.



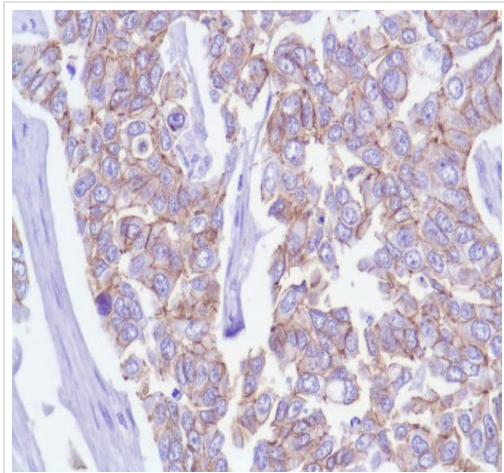
Immunohistochemistry (Formalin/PFA-fixed paraffin-embedded sections) - Anti-delta 1 Catenin/CAS antibody [SP63] - C-terminal (ab227638)

Formalin-fixed, paraffin-embedded human breast carcinoma tissue stained for delta 1 Catenin/CAS using ab227638 at 1/100 dilution in immunohistochemical analysis.



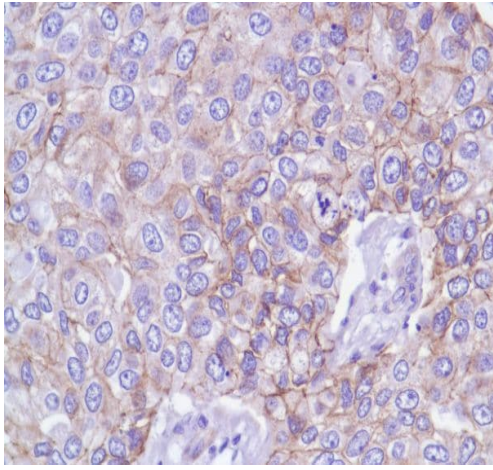
Flow Cytometry (Intracellular) - Anti-delta 1 Catenin/CAS antibody [SP63] - C-terminal (ab227638)

Flow cytometry analysis of A431 (human epidermoid carcinoma epithelial cell) labeling delta 1 Catenin/CAS with purified ab227638 at (red). Cells were fixed with 4% paraformaldehyde and permeabilised with 90% methanol. Goat anti rabbit IgG (Alexa Fluor® 488, [ab150077](#)) was used as a secondary antibody. Isotype control -Rabbit monoclonal IgG ([ab172730](#)) / Black. Unlabelled control -Unlabelled cells / blue.



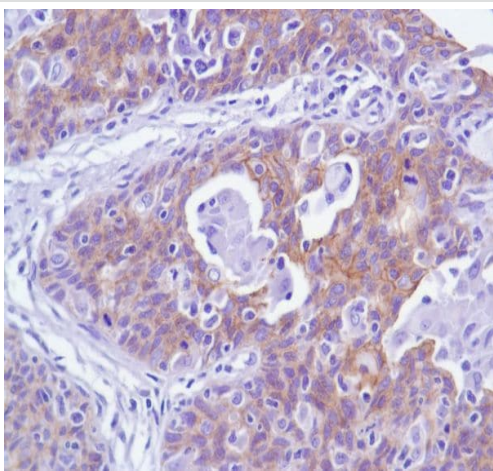
Immunohistochemistry (Formalin/PFA-fixed paraffin-embedded sections) - Anti-delta 1 Catenin/CAS antibody [SP63] - C-terminal (ab227638)

Formalin-fixed, paraffin-embedded human breast ductal cell carcinoma tissue stained for delta 1 Catenin/CAS using ab227638 at 1/100 dilution in immunohistochemical analysis.



Immunohistochemistry (Formalin/PFA-fixed paraffin-embedded sections) - Anti-delta 1 Catenin/CAS antibody [SP63] - C-terminal (ab227638)

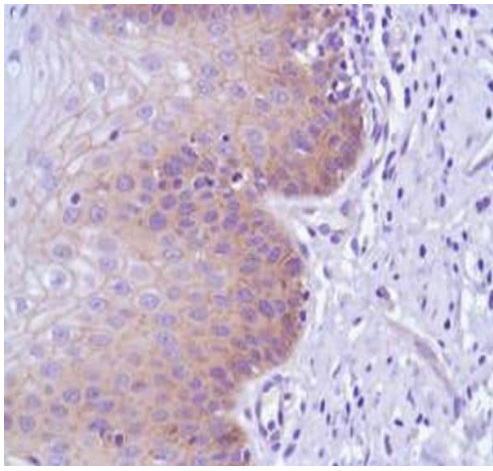
Formalin-fixed, paraffin-embedded human bladder transitional cell carcinoma tissue stained for delta 1 Catenin/CAS using ab227638 at 1/100 dilution in immunohistochemical analysis.



Immunohistochemistry (Formalin/PFA-fixed paraffin-embedded sections) - Anti-delta 1 Catenin/CAS antibody [SP63] - C-terminal (ab227638)

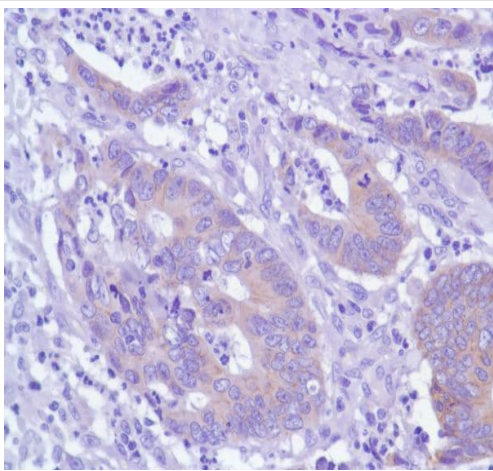
Formalin-fixed, paraffin-embedded human cervical squamous cell carcinoma tissue stained for delta 1 Catenin/CAS using ab227638 at 1/100 dilution in immunohistochemical analysis.





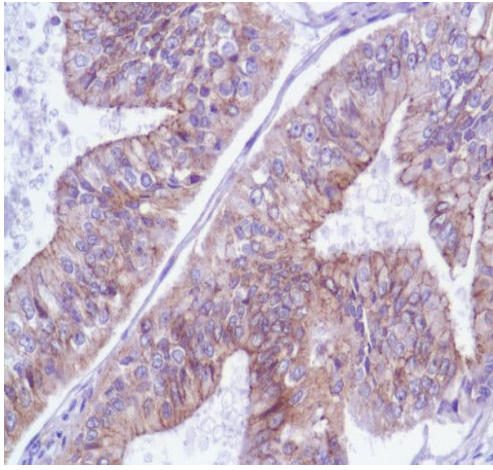
Immunohistochemistry (Formalin/PFA-fixed paraffin-embedded sections) - Anti-delta 1 Catenin/CAS antibody [SP63] - C-terminal (ab227638)

Formalin-fixed, paraffin-embedded human cervix tissue stained for delta 1 Catenin/CAS using ab227638 at 1/100 dilution in immunohistochemical analysis.



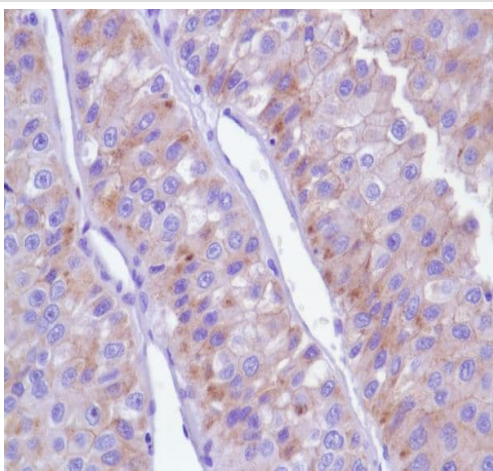
Immunohistochemistry (Formalin/PFA-fixed paraffin-embedded sections) - Anti-delta 1 Catenin/CAS antibody [SP63] - C-terminal (ab227638)

Formalin-fixed, paraffin-embedded human colon adenocarcinoma tissue stained for delta 1 Catenin/CAS using ab227638 at 1/100 dilution in immunohistochemical analysis.



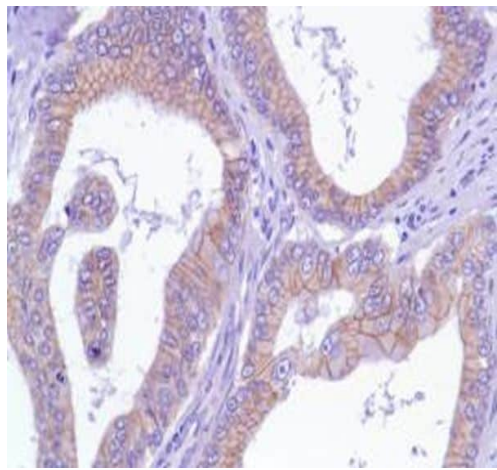
Immunohistochemistry (Formalin/PFA-fixed paraffin-embedded sections) - Anti-delta 1 Catenin/CAS antibody [SP63] - C-terminal (ab227638)

Formalin-fixed, paraffin-embedded human endometrium adenocarcinoma tissue stained for delta 1 Catenin/CAS using ab227638 at 1/100 dilution in immunohistochemical analysis.



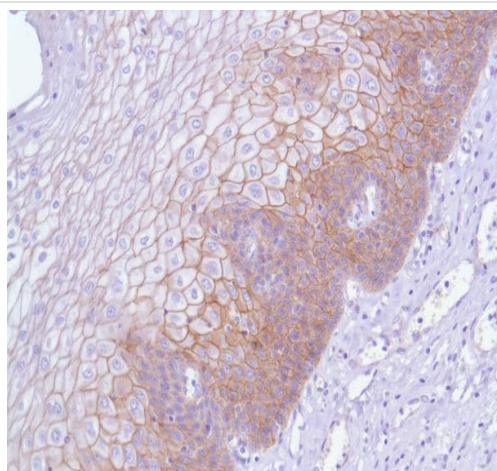
Immunohistochemistry (Formalin/PFA-fixed paraffin-embedded sections) - Anti-delta 1 Catenin/CAS antibody [SP63] - C-terminal (ab227638)

Formalin-fixed, paraffin-embedded human hepatocellular carcinoma tissue stained for delta 1 Catenin/CAS using ab227638 at 1/100 dilution in immunohistochemical analysis.



Immunohistochemistry (Formalin/PFA-fixed paraffin-embedded sections) - Anti-delta 1 Catenin/CAS antibody [SP63] - C-terminal (ab227638)

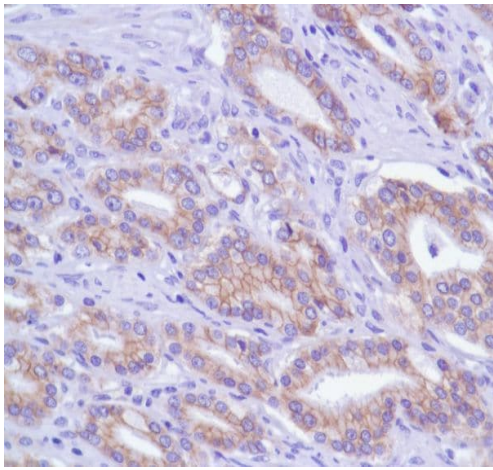
Formalin-fixed, paraffin-embedded human stomach adenocarcinoma tissue stained for delta 1 Catenin/CAS using ab227638 at 1/100 dilution in immunohistochemical analysis.



Immunohistochemistry (Formalin/PFA-fixed paraffin-embedded sections) - Anti-delta 1 Catenin/CAS antibody [SP63] - C-terminal (ab227638)

Formalin-fixed, paraffin-embedded human esophagus tissue stained for delta 1 Catenin/CAS using ab227638 at 1/100 dilution in immunohistochemical analysis.





Formalin-fixed, paraffin-embedded human prostate adenocarcinoma tissue stained for delta 1 Catenin/CAS using ab227638 at 1/100 dilution in immunohistochemical analysis.

Immunohistochemistry (Formalin/PFA-fixed paraffin-embedded sections) - Anti-delta 1 Catenin/CAS antibody [SP63] - C-terminal (ab227638)

Why choose a recombinant antibody?



**Research with confidence**  
Consistent and reproducible results



**Long-term and scalable supply**  
Recombinant technology



**Success from the first experiment**  
Confirmed specificity



**Ethical standards compliant**  
Animal-free production

Anti-delta 1 Catenin/CAS antibody [SP63] - C-terminal (ab227638)

**Please note:** All products are "FOR RESEARCH USE ONLY. NOT FOR USE IN DIAGNOSTIC PROCEDURES"

### Our Abpromise to you: Quality guaranteed and expert technical support

- Replacement or refund for products not performing as stated on the datasheet
- Valid for 12 months from date of delivery
- Response to your inquiry within 24 hours

- We provide support in Chinese, English, French, German, Japanese and Spanish
- Extensive multi-media technical resources to help you
- We investigate all quality concerns to ensure our products perform to the highest standards

If the product does not perform as described on this datasheet, we will offer a refund or replacement. For full details of the Abpromise, please visit <https://www.abcam.com/abpromise> or contact our technical team.

#### **Terms and conditions**

---

- Guarantee only valid for products bought direct from Abcam or one of our authorized distributors