


# Anti-Density Regulated Protein antibody ab108221

[1 References](#) [1 Image](#)

## Overview

<b>Product name</b>	Anti-Density Regulated Protein antibody
<b>Description</b>	Rabbit polyclonal to Density Regulated Protein
<b>Host species</b>	Rabbit
<b>Tested applications</b>	<b>Suitable for:</b> WB
<b>Species reactivity</b>	<p><b>Reacts with:</b> Mouse, Human</p> <p><b>Predicted to work with:</b> Rat, Rabbit, Goat, Horse, Chicken, Guinea pig, Cow, Dog, Turkey, Pig, Xenopus laevis, Chimpanzee, Rhesus monkey, Gorilla, Rainbow trout, Orangutan, Xenopus tropicalis </p>
<b>Immunogen</b>	Synthetic peptide corresponding to a region between amino acids 148 - 198 of Human Density Regulated Protein (NP_003668.2).
<b>Positive control</b>	HeLa, 293T or NIH 3T3 whole cell lysate.
<b>General notes</b>	<p>The Life Science industry has been in the grips of a reproducibility crisis for a number of years. Abcam is leading the way in addressing this with our range of recombinant monoclonal antibodies and knockout edited cell lines for gold-standard validation. Please check that this product meets your needs before purchasing.</p> <p>If you have any questions, special requirements or concerns, please send us an inquiry and/or contact our Support team ahead of purchase. Recommended alternatives for this product can be found below, along with publications, customer reviews and Q&amp;As</p>

## Properties

<b>Form</b>	Liquid
<b>Storage instructions</b>	Shipped at 4°C. Upon delivery aliquot and store at -20°C. Avoid freeze / thaw cycles.
<b>Storage buffer</b>	<p>pH: 7</p> <p>Preservative: 0.09% Sodium azide</p> <p>Constituent: Tris citrate/phosphate</p>
<b>Purity</b>	Immunogen affinity purified
<b>Clonality</b>	Polyclonal
<b>Isotype</b>	IgG

## Applications

### The Abpromise guarantee

Our **Abpromise guarantee** covers the use of ab108221 in the following tested applications.

The application notes include recommended starting dilutions; optimal dilutions/concentrations should be determined by the end user.

Application	Abreviews	Notes
WB		1/2000 - 1/10000. Predicted molecular weight: 22 kDa.

## Target

### Function

May be involved in the translation of target mRNAs by scanning and recognition of the initiation codon. Plays a role in the modulation of the translational profile of a subset of cancer-related mRNAs when recruited to the translational initiation complex by the oncogene MCTS1.

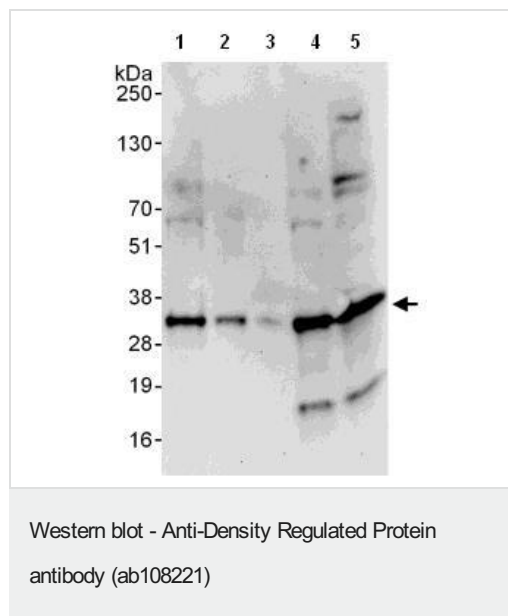
### Tissue specificity

Highly expressed in heart and skeletal muscle and moderately expressed in the brain, placenta, liver and pancreas. Weakly expressed in the lung and kidney.

### Sequence similarities

Belongs to the DENR family.  
Contains 1 SUI1 domain.

## Images



**All lanes :** Anti-Density Regulated Protein antibody (ab108221) at 0.1 µg/ml

**Lane 1 :** Hela whole cell lysate at 50 µg

**Lane 2 :** Hela whole cell lysate at 15 µg

**Lane 3 :** Hela whole cell lysate at 5 µg

**Lane 4 :** 293T whole cell lysate at 50 µg

**Lane 5 :** NIH 3T3 whole cell lysate at 50 µg

Developed using the ECL technique.

**Predicted band size:** 22 kDa

**Exposure time:** 30 seconds

**Please note:** All products are "FOR RESEARCH USE ONLY. NOT FOR USE IN DIAGNOSTIC PROCEDURES"

## Our Abpromise to you: Quality guaranteed and expert technical support

- Replacement or refund for products not performing as stated on the datasheet
- Valid for 12 months from date of delivery
- Response to your inquiry within 24 hours

- We provide support in Chinese, English, French, German, Japanese and Spanish
- Extensive multi-media technical resources to help you
- We investigate all quality concerns to ensure our products perform to the highest standards

If the product does not perform as described on this datasheet, we will offer a refund or replacement. For full details of the Abpromise, please visit <https://www.abcam.com/abpromise> or contact our technical team.

#### **Terms and conditions**

---

- Guarantee only valid for products bought direct from Abcam or one of our authorized distributors