


Product datasheet

Anti-DERL1/Derlin-1 antibody ab176732

[5 References](#) [3 Images](#)

Overview

Product name	Anti-DERL1/Derlin-1 antibody
Description	Rabbit polyclonal to DERL1/Derlin-1
Host species	Rabbit
Tested applications	Suitable for: WB, IP, IHC-P
Species reactivity	Reacts with: Mouse, Human Predicted to work with: Rat, Rabbit, Horse, Chicken, Guinea pig, Cow, Dog, Pig, Non human primates 
Immunogen	Synthetic peptide within Human DERL1/Derlin-1 aa 201-251. The exact sequence is proprietary. NP_077271.1. Database link: Q9BUN8
Positive control	WB: HeLa, HEK-293T and NIH/3T3 cell lysates. IP: HeLa cell lysate. IHC-P: Human ovarian carcinoma tissue.
General notes	<p>The Life Science industry has been in the grips of a reproducibility crisis for a number of years. Abcam is leading the way in addressing this with our range of recombinant monoclonal antibodies and knockout edited cell lines for gold-standard validation. Please check that this product meets your needs before purchasing.</p> <p>If you have any questions, special requirements or concerns, please send us an inquiry and/or contact our Support team ahead of purchase. Recommended alternatives for this product can be found below, along with publications, customer reviews and Q&As</p>

Properties

Form	Liquid
Storage instructions	Shipped at 4°C. Store at +4°C short term (1-2 weeks). Upon delivery aliquot. Store at -20°C long term. Avoid freeze / thaw cycle.
Storage buffer	pH: 6.8 Preservative: 0.09% Sodium azide Constituents: 0.1% BSA, 99% Tris buffered saline
Purity	pH 7 to 8 Immunogen affinity purified

Purification notes	ab176732 is affinity purified using an epitope specific to DERL1/Derlin-1 immobilized on solid support.
Clonality	Polyclonal
Isotype	IgG

Applications

The Abpromise guarantee Our **Abpromise guarantee** covers the use of ab176732 in the following tested applications. The application notes include recommended starting dilutions; optimal dilutions/concentrations should be determined by the end user.

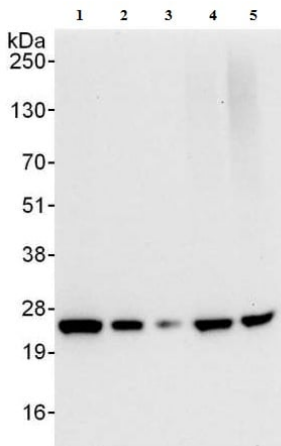
Application	Abreviews	Notes
WB		1/2000 - 1/10000. Predicted molecular weight: 29 kDa.
IP		Use at 2-5 µg/mg of lysate.
IHC-P		1/100 - 1/500. Perform heat mediated antigen retrieval with citrate buffer pH 6 before commencing with IHC staining protocol.

Target

Relevance Derlin 1 is a channel-like protein found in the endoplasmic reticulum (ER) membrane. It is specifically required for the degradation of misfolded ER luminal proteins. Derlin 1 participates in the transfer of misfolded proteins from the ER to the cytosol, where they are destroyed by the proteasome in a ubiquitin-dependent manner. It may act by forming a channel that allows the retrotranslocation of misfolded proteins into the cytosol and then transferring them to the ATPase VCP complex, which translocates and ubiquitinates misfolded proteins. In the case of infection by cytomegaloviruses, derlin 1 plays a central role in export from the ER and subsequent degradation of MHC class I heavy chains via its interaction with US11 viral protein, which recognizes and associates with MHC class I heavy chains. Derlin 1 also participates in the degradation of misfolded cytomegalovirus US2 protein.

Cellular localization Endoplasmic reticulum; multi pass membrane protein.

Images



Western blot - Anti-DERL1/Derlin-1 antibody
(ab176732)

All lanes : Anti-DERL1/Derlin-1 antibody (ab176732) at 0.04 µg/ml

Lane 1 : HeLa whole cell lysate at 50 µg

Lane 2 : HeLa whole cell lysate at 15 µg

Lane 3 : HeLa whole cell lysate at 5 µg

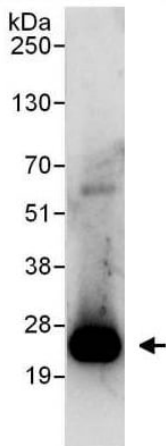
Lane 4 : 293T whole cell lysate at 50 µg

Lane 5 : NIH3T3 whole cell lysate at 50 µg

Developed using the ECL technique.

Predicted band size: 29 kDa

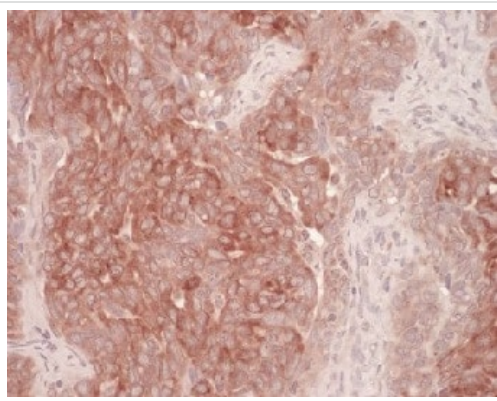
Exposure time: 10 seconds



Immunoprecipitation - Anti-DERL1/Derlin-1 antibody
(ab176732)

ab176732 at 0.4 µg/ml detecting DERL1/Derlin-1 in HeLa whole cell lysate by WB following IP. ab176732 was used for IP at 3 µg/mg of lysate, 1 mg of lysate was used for IP and 20% of the IP was loaded.

Detection: Chemiluminescence with an exposure time of 10 seconds.



Immunohistochemical analysis of formalin fixed, paraffin embedded Human ovarian carcinoma tissue labeling DERL1/Derlin-1 using ab176732 at a 1/200 dilution, followed by peroxidase substrate detection.

Immunohistochemistry (Formalin/PFA-fixed paraffin-embedded sections) - Anti-DERL1/Derlin-1 antibody (ab176732)

Please note: All products are "FOR RESEARCH USE ONLY. NOT FOR USE IN DIAGNOSTIC PROCEDURES"

Our Abpromise to you: Quality guaranteed and expert technical support

- Replacement or refund for products not performing as stated on the datasheet
- Valid for 12 months from date of delivery
- Response to your inquiry within 24 hours
- We provide support in Chinese, English, French, German, Japanese and Spanish
- Extensive multi-media technical resources to help you
- We investigate all quality concerns to ensure our products perform to the highest standards

If the product does not perform as described on this datasheet, we will offer a refund or replacement. For full details of the Abpromise, please visit <https://www.abcam.com/abpromise> or contact our technical team.

Terms and conditions

- Guarantee only valid for products bought direct from Abcam or one of our authorized distributors