

Product datasheet

Anti-DFFB/CAD antibody ab8401

[4 Images](#)

Overview

| | |
|----------------------------|---|
| Product name | Anti-DFFB/CAD antibody |
| Description | Rabbit polyclonal to DFFB/CAD |
| Host species | Rabbit |
| Tested applications | Suitable for: WB, IHC-P, ICC/IF |
| Species reactivity | Reacts with: Mouse |
| Immunogen | Synthetic peptide. This information is proprietary to Abcam and/or its suppliers. |
| Positive control | Murine kidney tissue lysate. A 40 kDaband should be detected. |
| General notes | <p>The Life Science industry has been in the grips of a reproducibility crisis for a number of years. Abcam is leading the way in addressing this with our range of recombinant monoclonal antibodies and knockout edited cell lines for gold-standard validation. Please check that this product meets your needs before purchasing.</p> <p>If you have any questions, special requirements or concerns, please send us an inquiry and/or contact our Support team ahead of purchase. Recommended alternatives for this product can be found below, along with publications, customer reviews and Q&As</p> |

Properties

| | |
|-----------------------------|---|
| Form | Liquid |
| Storage instructions | Shipped at 4°C. Store at +4°C. |
| Storage buffer | pH: 7.2 Preservative: 0.02% Sodium azide |
| Purity | Affinity purified |
| Clonality | Polyclonal |
| Isotype | IgG |
| Light chain type | unknown |

Applications

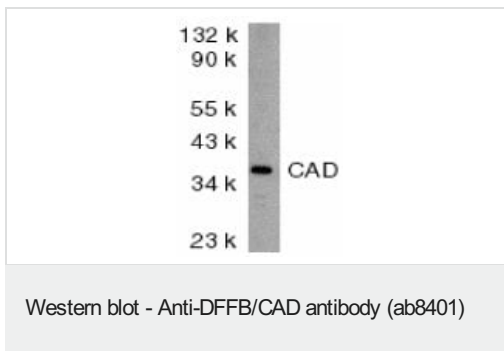
The Abpromise guarantee Our **Abpromise guarantee** covers the use of ab8401 in the following tested applications. The application notes include recommended starting dilutions; optimal dilutions/concentrations should be determined by the end user.

| Application | Abreviews | Notes |
|-------------|-----------|---|
| WB | | 1/500 - 1/1000. Predicted molecular weight: 39 kDa. |
| IHC-P | | Use a concentration of 2 µg/ml. |
| ICC/IF | | Use a concentration of 20 µg/ml. |

Target

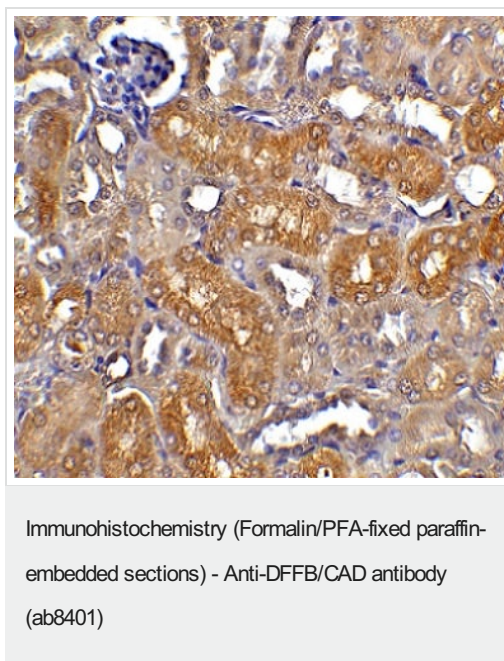
| | |
|------------------------------|---|
| Function | Nuclease that induces DNA fragmentation and chromatin condensation during apoptosis. Degrades naked DNA and induces apoptotic morphology. |
| Sequence similarities | Contains 1 CIDE-N domain. |
| Cellular localization | Cytoplasm. Nucleus. |

Images

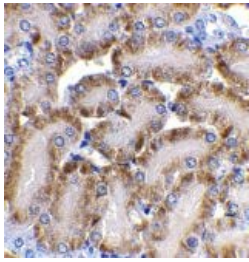


Anti-DFFB/CAD antibody (ab8401) at 2 µg/ml + murine kidney tissue lysate

Predicted band size: 39 kDa



Immunohistochemistry (Formalin-fixed paraffin embedded sections) of mouse kidney tissue labeling DFFB/CAD with Anti-DFFB/CAD antibody (ab8401) at 5µg/ml.



ab8401 at 2 μ g/ml staining DFFB/CAD in mouse kidney tissue by IHC

Immunohistochemistry (Formalin/PFA-fixed paraffin-embedded sections) - Anti-DFFB/CAD antibody (ab8401)

Immunocytochemistry/ Immunofluorescence - Anti-DFFB/CAD antibody (ab8401)

Immunofluorescence of DFFB/CAD in Mouse Kidney cells using ab8401 at 10 μ g/ml.

Please note: All products are "FOR RESEARCH USE ONLY. NOT FOR USE IN DIAGNOSTIC PROCEDURES"

Our Abpromise to you: Quality guaranteed and expert technical support

- Replacement or refund for products not performing as stated on the datasheet
- Valid for 12 months from date of delivery
- Response to your inquiry within 24 hours
- We provide support in Chinese, English, French, German, Japanese and Spanish
- Extensive multi-media technical resources to help you
- We investigate all quality concerns to ensure our products perform to the highest standards

If the product does not perform as described on this datasheet, we will offer a refund or replacement. For full details of the Abpromise, please visit <https://www.abcam.com/abpromise> or contact our technical team.

Terms and conditions

- Guarantee only valid for products bought direct from Abcam or one of our authorized distributors