

## Product datasheet

# Anti-DHX16 antibody ab176819

[2 Images](#)

### Overview

---

<b>Product name</b>	Anti-DHX16 antibody
<b>Description</b>	Rabbit polyclonal to DHX16
<b>Host species</b>	Rabbit
<b>Tested applications</b>	<b>Suitable for:</b> IP, WB
<b>Species reactivity</b>	<b>Reacts with:</b> Human
<b>Immunogen</b>	Synthetic peptide within Human DHX16 aa 991-1041 (C terminal). The exact sequence is proprietary. NP_003578.1 Sequence:  LTTKEFMRQV LEIESSWLE VAPHYYKAKE LEDPHAKKMP KKIGKTREEL G  Database link: <a href="#">O60231</a>

 [Run BLAST with](#)

 [Run BLAST with](#)

**Positive control** HeLa whole cell lysate.

**General notes** The Life Science industry has been in the grips of a reproducibility crisis for a number of years. Abcam is leading the way in addressing this with our range of recombinant monoclonal antibodies and knockout edited cell lines for gold-standard validation. Please check that this product meets your needs before purchasing.

If you have any questions, special requirements or concerns, please send us an inquiry and/or contact our Support team ahead of purchase. Recommended alternatives for this product can be found below, along with publications, customer reviews and Q&As

### Properties

---

<b>Form</b>	Liquid
<b>Storage instructions</b>	Shipped at 4°C. Store at +4°C short term (1-2 weeks). Upon delivery aliquot. Store at -20°C long term. Avoid freeze / thaw cycle.
<b>Storage buffer</b>	pH: 6.8 Preservative: 0.09% Sodium azide Constituents: 99% Tris buffered saline, 0.1% BSA
<b>Purity</b>	Immunogen affinity purified

<b>Purification notes</b>	ab176819 was affinity purified using an epitope specific to DHX16 immobilized on solid support.
<b>Clonality</b>	Polyclonal
<b>Isotype</b>	IgG

## Applications

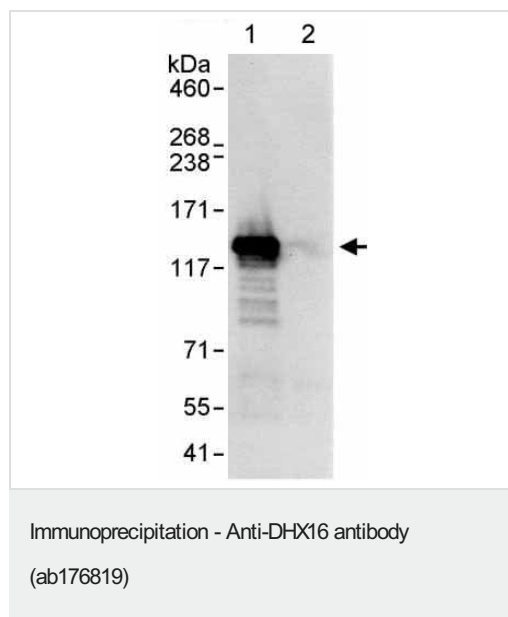
**The Abpromise guarantee** Our **Abpromise guarantee** covers the use of ab176819 in the following tested applications. The application notes include recommended starting dilutions; optimal dilutions/concentrations should be determined by the end user.

Application	Abreviews	Notes
IP		Use at 2-5 µg/mg of lysate.
WB		1/2000 - 1/10000. Predicted molecular weight: 119 kDa.

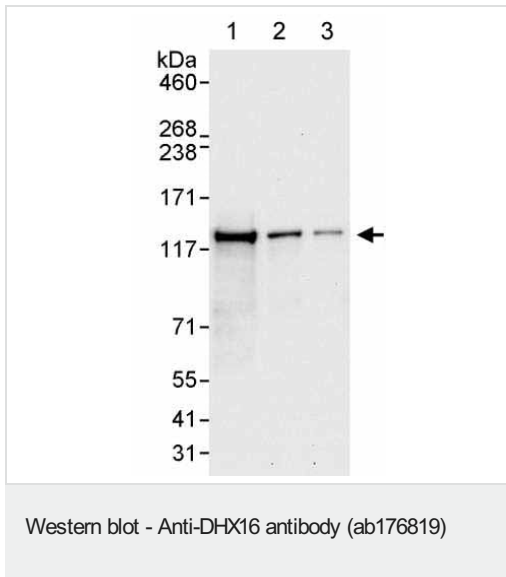
## Target

<b>Function</b>	Probable ATP-binding RNA helicase involved in pre-mRNA splicing.
<b>Sequence similarities</b>	Belongs to the DEAD box helicase family. DEAH subfamily. DDX16/PRP8 sub-subfamily. Contains 1 helicase ATP-binding domain. Contains 1 helicase C-terminal domain.
<b>Cellular localization</b>	Nucleus.

## Images



Detection of DHX16 in Immunoprecipitates of HeLa whole cell lysates (1 mg for IP, 20% of IP loaded) using ab176819 at 3 µg/mg lysate for IP (Lane 1). For WB detection ab176819 was used at 1 µg/ml. Lane 2 represents control IgG IP. Detection: Chemiluminescence with an exposure time of 3 seconds.



**All lanes :** Anti-DHX16 antibody (ab176819) at 0.04 µg/ml

**Lane 1 :** HeLa whole cell lysate at 50 µg

**Lane 2 :** HeLa whole cell lysate at 15 µg

**Lane 3 :** HeLa whole cell lysate at 5 µg

Developed using the ECL technique.

**Predicted band size:** 119 kDa

**Exposure time:** 10 seconds

**Please note:** All products are "FOR RESEARCH USE ONLY. NOT FOR USE IN DIAGNOSTIC PROCEDURES"

### Our Abpromise to you: Quality guaranteed and expert technical support

- Replacement or refund for products not performing as stated on the datasheet
- Valid for 12 months from date of delivery
- Response to your inquiry within 24 hours
- We provide support in Chinese, English, French, German, Japanese and Spanish
- Extensive multi-media technical resources to help you
- We investigate all quality concerns to ensure our products perform to the highest standards

If the product does not perform as described on this datasheet, we will offer a refund or replacement. For full details of the Abpromise, please visit <https://www.abcam.com/abpromise> or contact our technical team.

### Terms and conditions

- Guarantee only valid for products bought direct from Abcam or one of our authorized distributors