

### Anti-dis2 antibody ab122909

[3 References](#) [2 Images](#)

#### Overview

<b>Product name</b>	Anti-dis2 antibody
<b>Description</b>	Rabbit polyclonal to dis2
<b>Host species</b>	Rabbit
<b>Specificity</b>	ab122909 is specific to dis2 and does not cross-react with Sds21.
<b>Tested applications</b>	<b>Suitable for:</b> WB, IP
<b>Species reactivity</b>	<b>Reacts with:</b> Schizosaccharomyces pombe
<b>Immunogen</b>	Recombinant full length Schizosaccharomyces pombe dis2.
<b>Positive control</b>	S.pombe cell extract.
<b>General notes</b>	<p>The Life Science industry has been in the grips of a reproducibility crisis for a number of years. Abcam is leading the way in addressing this with our range of recombinant monoclonal antibodies and knockout edited cell lines for gold-standard validation. Please check that this product meets your needs before purchasing.</p> <p>If you have any questions, special requirements or concerns, please send us an inquiry and/or contact our Support team ahead of purchase. Recommended alternatives for this product can be found below, along with publications, customer reviews and Q&amp;As</p>

#### Properties

<b>Form</b>	Liquid
<b>Storage instructions</b>	Shipped at 4°C. Store at -20°C.
<b>Storage buffer</b>	pH: 6 Preservative: 0.05% Sodium azide Constituent: 99% Whole serum
<b>Purity</b>	Whole antiserum
<b>Clonality</b>	Polyclonal
<b>Isotype</b>	IgG

#### Applications

The **Abpromise guarantee** Our **Abpromise guarantee** covers the use of ab122909 in the following tested applications.

The application notes include recommended starting dilutions; optimal dilutions/concentrations should be determined by the end user.

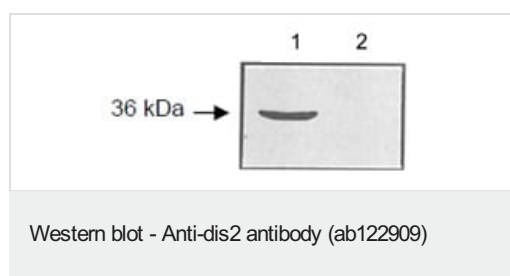
Application	Abreviews	Notes
WB		1/300 - 1/1000. Predicted molecular weight: 37 kDa.
IP		Use at an assay dependent dilution.

## Target

**Relevance** Essential role in cell cycle control. PP1 is perhaps required for exit from mitosis.

**Cellular localization** Nucleus.

## Images

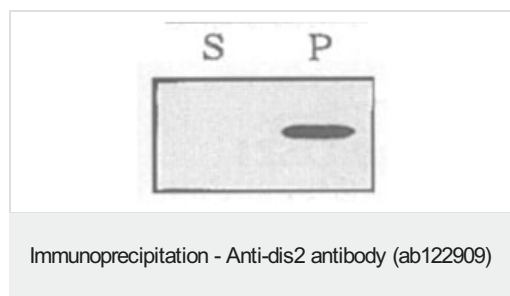


**All lanes :** Anti-dis2 antibody (ab122909) at 1/300 dilution

**Lane 1 :** S.pombe cells wild type

**Lane 2 :** S.pombe cells dis2 deletion mutant

**Predicted band size:** 37 kDa



Immunoprecipitation of wild-type S. pombe extracts was performed using ab122909. Resulting supernatant (S) and immunoprecipitate (P) were immunoblotted by anti-dis2 antibody.

**Please note:** All products are "FOR RESEARCH USE ONLY. NOT FOR USE IN DIAGNOSTIC PROCEDURES"

## Our Abpromise to you: Quality guaranteed and expert technical support

- Replacement or refund for products not performing as stated on the datasheet
- Valid for 12 months from date of delivery
- Response to your inquiry within 24 hours
- We provide support in Chinese, English, French, German, Japanese and Spanish
- Extensive multi-media technical resources to help you
- We investigate all quality concerns to ensure our products perform to the highest standards

If the product does not perform as described on this datasheet, we will offer a refund or replacement. For full details of the Abpromise,

please visit <https://www.abcam.com/abpromise> or contact our technical team.

#### **Terms and conditions**

---

- Guarantee only valid for products bought direct from Abcam or one of our authorized distributors