

Product datasheet

Anti-DLK-1 antibody [3A10] ab119930

★★★★★ [2 Abreviews](#) [11 References](#) [4 Images](#)

Overview

Product name	Anti-DLK-1 antibody [3A10]
Description	Mouse monoclonal [3A10] to DLK-1
Host species	Mouse
Tested applications	Suitable for: WB, ELISA, Flow Cyt, ICC/IF
Species reactivity	Reacts with: Mouse, Human, Recombinant fragment
Immunogen	Recombinant fragment corresponding to Human DLK-1 aa 174-349.
Positive control	Recombinant DLK-1 protein; U251 cells; NIH3T3 cells
General notes	<p>The Life Science industry has been in the grips of a reproducibility crisis for a number of years. Abcam is leading the way in addressing this with our range of recombinant monoclonal antibodies and knockout edited cell lines for gold-standard validation. Please check that this product meets your needs before purchasing.</p> <p>If you have any questions, special requirements or concerns, please send us an inquiry and/or contact our Support team ahead of purchase. Recommended alternatives for this product can be found below, along with publications, customer reviews and Q&As</p>

Properties

Form	Liquid
Storage instructions	Shipped at 4°C. Store at +4°C short term (1-2 weeks). Store at -20°C long term.
Storage buffer	Preservative: 0.05% Sodium azide Constituent: PBS
Purity	Protein G purified
Purification notes	Purified from tissue culture supernatant.
Clonality	Monoclonal
Clone number	3A10
Isotype	IgG1
Light chain type	kappa

Applications

The Abpromise guarantee

Our **Abpromise guarantee** covers the use of ab119930 in the following tested applications.

The application notes include recommended starting dilutions; optimal dilutions/concentrations should be determined by the end user.

Application	Abreviews	Notes
WB		1/500 - 1/2000. Predicted molecular weight: 41 kDa.
ELISA		1/10000.
Flow Cyt		1/200 - 1/400. ab170190 - Mouse monoclonal IgG1, is suitable for use as an isotype control with this antibody.
ICC/IF	★★★★★ (2)	1/200 - 1/1000.

Target

Function

May have a role in neuroendocrine differentiation.

Tissue specificity

Found within the stromal cells in close contact to the vascular structure of placental villi, yolk sac, fetal liver, adrenal cortex and pancreas and in the beta cells of the islets of Langerhans in the adult pancreas. Found also in some forms of neuroendocrine lung tumor tissue.

Sequence similarities

Contains 6 EGF-like domains.

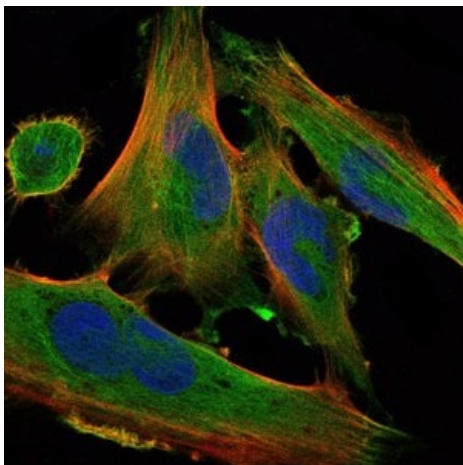
Post-translational modifications

N- and O-glycosylated.

Cellular localization

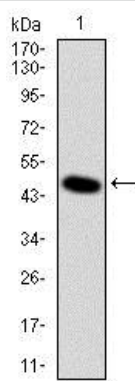
Membrane.

Images



Immunofluorescence analysis of U251 cells using ab119930 at 1/200 dilution (green). Blue: DRAQ5 fluorescent DNA dye. Red: Actin filaments have been labeled with Alexa Fluor-555 phalloidin.

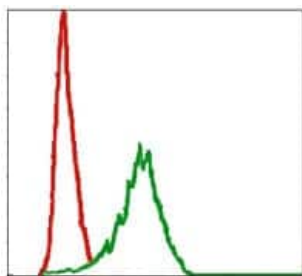
Immunocytochemistry/ Immunofluorescence - Anti-DLK-1 antibody [3A10] (ab119930)



Western blot - Anti-DLK-1 antibody [3A10]
(ab119930)

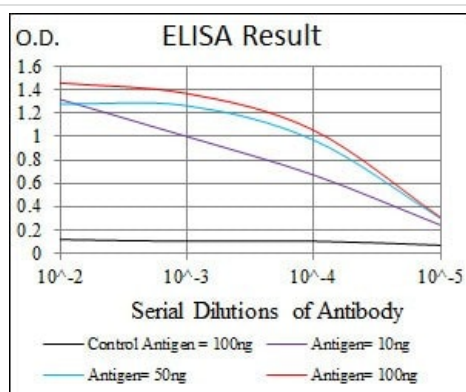
Anti-DLK-1 antibody [3A10] (ab119930) at 1/500 dilution +
Recombinant DLK-1 protein

Predicted band size: 41 kDa



Flow Cytometry - Anti-DLK-1 antibody [3A10]
(ab119930)

Flow cytometric analysis of NIH3T3 cells using ab119930 at 1/200
dilution (green) and negative control (red).



ELISA - Anti-DLK-1 antibody [3A10] (ab119930)

ELISA using ab119930.

Please note: All products are "FOR RESEARCH USE ONLY. NOT FOR USE IN DIAGNOSTIC PROCEDURES"

Our Promise to you: Quality guaranteed and expert technical support

- Replacement or refund for products not performing as stated on the datasheet
- Valid for 12 months from date of delivery

- Response to your inquiry within 24 hours
- We provide support in Chinese, English, French, German, Japanese and Spanish
- Extensive multi-media technical resources to help you
- We investigate all quality concerns to ensure our products perform to the highest standards

If the product does not perform as described on this datasheet, we will offer a refund or replacement. For full details of the Abpromise, please visit <https://www.abcam.com/abpromise> or contact our technical team.

Terms and conditions

- Guarantee only valid for products bought direct from Abcam or one of our authorized distributors