

Anti-DMPO Nitron Adduct antibody ab23702

[6 References](#) [1 Image](#)

Overview

Product name	Anti-DMPO Nitron Adduct antibody
Description	Rabbit polyclonal to DMPO Nitron Adduct
Host species	Rabbit
Tested applications	Suitable for: WB, ELISA
Species reactivity	Reacts with: Species independent
Immunogen	5,5-dimethyl-2-(8-octanoic acid)-1-pyrroline-N-oxide conjugated to Ovalbumin.

General notes

Measurement of protein radicals is now possible with the development of the "spin trap immunoassay" (please see refs 1,2). Compared to traditional techniques, immunodetection of spin trap products allows a higher level of sensitivity and throughput with greatly reduced sample consumption.

The Life Science industry has been in the grips of a reproducibility crisis for a number of years. Abcam is leading the way in addressing this with our range of recombinant monoclonal antibodies and knockout edited cell lines for gold-standard validation. Please check that this product meets your needs before purchasing.

If you have any questions, special requirements or concerns, please send us an inquiry and/or contact our Support team ahead of purchase. Recommended alternatives for this product can be found below, along with publications, customer reviews and Q&As

Properties

Form	Liquid
Storage instructions	Shipped at 4°C. Upon delivery aliquot and store at -20°C. Avoid freeze / thaw cycles.
Storage buffer	Constituent: Whole serum
Purity	Whole antiserum
Primary antibody notes	Measurement of protein radicals is now possible with the development of the "spin trap immunoassay" (please see refs 1,2). Compared to traditional techniques, immunodetection of spin trap products allows a higher level of sensitivity and throughput with greatly reduced sample consumption.
Clonality	Polyclonal

Isotype

IgG

Applications

The Abpromise guarantee

Our **Abpromise guarantee** covers the use of ab23702 in the following tested applications.

The application notes include recommended starting dilutions; optimal dilutions/concentrations should be determined by the end user.

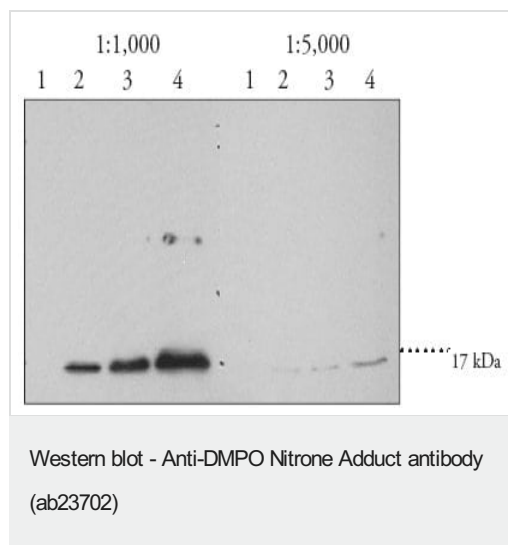
Application	Abreviews	Notes
WB		1/1000 - 1/5000. Detects a band of approximately 17 kDa.
ELISA		1/1000 - 1/5000.

Target

Relevance

For measurement of protein radicals; some proteins with endogenous peroxidase activity are especially susceptible to forming DMPO adducts.

Images



All lanes : Anti-DMPO Nitron Adduct antibody (ab23702)

Lane 1 : Metmyoglobin at 3 μ l

Lane 2 : Metmyoglobin-DMPO at 3 μ l

Lane 3 : Metmyoglobin-DMPO at 5 μ l

Lane 4 : Metmyoglobin-DMPO at 10 μ l

Observed band size: 17 kDa

ab23702 was used at a concentration of 1/1000 or 1/5000, as noted at the top of the image.

Please note: All products are "FOR RESEARCH USE ONLY. NOT FOR USE IN DIAGNOSTIC PROCEDURES"

Our Abpromise to you: Quality guaranteed and expert technical support

- Replacement or refund for products not performing as stated on the datasheet
- Valid for 12 months from date of delivery
- Response to your inquiry within 24 hours
- We provide support in Chinese, English, French, German, Japanese and Spanish

- Extensive multi-media technical resources to help you
- We investigate all quality concerns to ensure our products perform to the highest standards

If the product does not perform as described on this datasheet, we will offer a refund or replacement. For full details of the Abpromise, please visit <https://www.abcam.com/abpromise> or contact our technical team.

Terms and conditions

- Guarantee only valid for products bought direct from Abcam or one of our authorized distributors