


## Product datasheet

### Anti-DNA2 antibody ab96488

★★★★★ [3 Abreviews](#) [28 References](#) [3 Images](#)

#### Overview

<b>Product name</b>	Anti-DNA2 antibody
<b>Description</b>	Rabbit polyclonal to DNA2
<b>Host species</b>	Rabbit
<b>Specificity</b>	From Jan 2024, QC testing of replenishment batches of this polyclonal changed. All tested and expected application and reactive species combinations are still covered by our Abcam product promise. However, we no longer test all applications. For more information on a specific batch, please contact our Scientific Support who will be happy to help.
<b>Tested applications</b>	<b>Suitable for:</b> WB, IHC-P
<b>Species reactivity</b>	<b>Reacts with:</b> Human <b>Predicted to work with:</b> Mouse, Rat 
<b>Immunogen</b>	Synthetic peptide corresponding to Human DNA2 aa 1000 to the C-terminus (C terminal) conjugated to keyhole limpet haemocyanin. (Peptide available as <a href="#">ab42548</a> )
<b>Positive control</b>	This antibody gave a positive signal in the following Human Whole Cell lysates; HEK293, HEK293 (Nuclear) and U2OS and FFPE human liver tissue sections.
<b>General notes</b>	<p>ab96488 is raised using the same immunogen as <a href="#">ab42439</a>. Batches sold under ab96488 have passed QC testing in Western Blot. In our hands, this product did not work in ICC/IF. For further information please contact our Customer Services team.</p> <p>The Life Science industry has been in the grips of a reproducibility crisis for a number of years. Abcam is leading the way in addressing this with our range of recombinant monoclonal antibodies and knockout edited cell lines for gold-standard validation. Please check that this product meets your needs before purchasing.</p> <p>If you have any questions, special requirements or concerns, please send us an inquiry and/or contact our Support team ahead of purchase. Recommended alternatives for this product can be found below, along with publications, customer reviews and Q&amp;As</p>

#### Properties

<b>Form</b>	Liquid
<b>Storage instructions</b>	Shipped at 4°C. Store at +4°C short term (1-2 weeks). Upon delivery aliquot. Store at -20°C or -80°C. Avoid freeze / thaw cycle.

**Storage buffer**

pH: 7.40  
Preservative: 0.02% Sodium azide  
Constituent: PBS

Batches of this product that have a concentration < 1mg/ml may have BSA added as a stabilising agent. If you would like information about the formulation of a specific lot, please contact our scientific support team who will be happy to help.

**Purity**

Immunogen affinity purified

**Clonality**

Polyclonal

**Isotype**

IgG

**Applications****The Abpromise guarantee**

Our **Abpromise guarantee** covers the use of ab96488 in the following tested applications.

The application notes include recommended starting dilutions; optimal dilutions/concentrations should be determined by the end user.

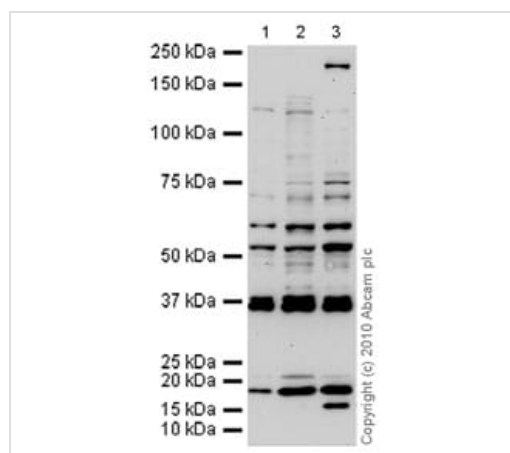
Application	Abreviews	Notes
WB	★ ★ ★ ★ ★ (1)	Use a concentration of 1 µg/ml. Detects a band of approximately 125 kDa (predicted molecular weight: 120 kDa).
IHC-P		Use a concentration of 1 µg/ml. Perform heat mediated antigen retrieval before commencing with IHC staining protocol.

**Target****Function**

May function in chromosomal DNA replication.

**Sequence similarities**

Belongs to the DNA2/NAM7 helicase family.

**Images**

Western blot - Anti-DNA2 antibody (ab96488)

**All lanes** : Anti-DNA2 antibody (ab96488) at 1 µg/ml

**Lane 1** : HEK293 (Human embryonic kidney cell line) Whole Cell Lysate

**Lane 2** : HEK293 (Human embryonic kidney cell line) Nuclear Lysate

**Lane 3** : U2OS (Human osteosarcoma cell line) Whole Cell Lysate

Lysates/proteins at 10 µg per lane.

**Secondary**

**All lanes** : Goat polyclonal to Rabbit IgG - H&L - Pre-Adsorbed (HRP) at 1/3000 dilution

Developed using the ECL technique.

Performed under reducing conditions.

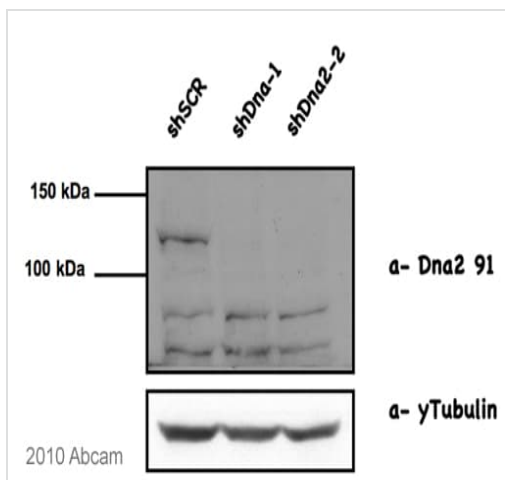
**Predicted band size:** 120 kDa

**Observed band size:** 125 kDa

**Additional bands at:** 16 kDa, 18 kDa, 210 kDa, 37 kDa, 38 kDa, 54 kDa, 60 kDa, 70 kDa, 76 kDa. We are unsure as to the identity of these extra bands.

**Exposure time:** 10 minutes

This antibody detects multiple bands in addition to the band of interest, reflecting low levels of expression of DNA2. siRNA knockdown experiments have demonstrated that this antibody detects a band at ~120 kDa corresponding to human DNA2 (please see image courtesy of Julien Duxin).



Western blot - Anti-DNA2 antibody (ab96488)

Image courtesy of Julien Duxin and Sheila Stewart

**All lanes :** Anti-DNA2 antibody (ab96488)

**Lane 1 :** U2OS cells plus control shRNA

**Lane 2 :** U2OS cells plus shDNA2-1 shRNA

**Lane 3 :** U2OS cells plus shDNA2-2 shRNA

**Secondary**

**All lanes :** Anti-rabbit at 1/3000 dilution

Developed using the ECL technique.

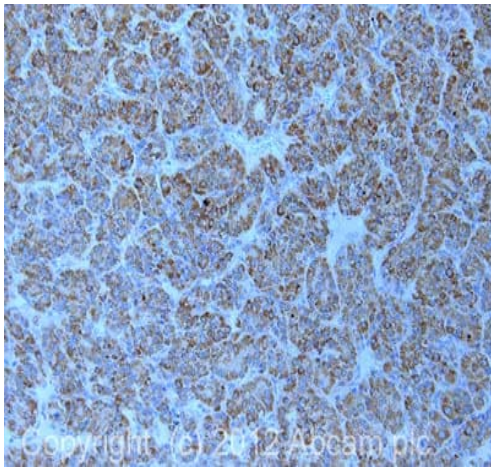
Performed under reducing conditions.

**Predicted band size:** 120 kDa

**Observed band size:** 120 kDa

Western blot showing detection of DNA2 by [ab42439](#). A 120 kDa band corresponding to DNA2 was detected in lysates of U2OS cells treated with control shRNA (lane 1) but not in those from knockdown cells treated with two different shRNAs for DNA2 (lanes 2 and 3). Following pre-blocking for 30 mins in 5% milk, PBS-Tween, the membrane was incubated overnight at 4°C with

**ab42439** at a dilution of 1/1000 in 5% milk, PBS-Tween. The membrane was then incubated with the secondary antibody at 1/3000 dilution in 5% milk, PBS-Tween for 2 hours at RT, and washed 3 x 10 mins with PBS-Tween prior to ECL detection.



Immunohistochemistry (Formalin/PFA-fixed paraffin-embedded sections) - Anti-DNA2 antibody (ab96488)

IHC image of ab96488 staining in human liver carcinoma formalin fixed paraffin embedded tissue section, performed on a Leica Bond™ system using the standard protocol F. The section was pre-treated using heat mediated antigen retrieval with sodium citrate buffer (pH6, epitope retrieval solution 1) for 20 mins. The section was then incubated with ab96488, 1 µg/ml, for 15 mins at room temperature and detected using an HRP conjugated compact polymer system. DAB was used as the chromogen. The section was then counterstained with haematoxylin and mounted with DPX.

For other IHC staining systems (automated and non-automated) customers should optimize variable parameters such as antigen retrieval conditions, primary antibody concentration and antibody incubation times.

**Please note:** All products are "FOR RESEARCH USE ONLY. NOT FOR USE IN DIAGNOSTIC PROCEDURES"

### Our Abpromise to you: Quality guaranteed and expert technical support

---

- Replacement or refund for products not performing as stated on the datasheet
- Valid for 12 months from date of delivery
- Response to your inquiry within 24 hours
- We provide support in Chinese, English, French, German, Japanese and Spanish
- Extensive multi-media technical resources to help you
- We investigate all quality concerns to ensure our products perform to the highest standards

If the product does not perform as described on this datasheet, we will offer a refund or replacement. For full details of the Abpromise, please visit <https://www.abcam.com/abpromise> or contact our technical team.

### Terms and conditions

---

- Guarantee only valid for products bought direct from Abcam or one of our authorized distributors