

Product datasheet

Anti-DOCK180 antibody ab97325

[4 References](#) [5 Images](#)

Overview

Product name	Anti-DOCK180 antibody
Description	Rabbit polyclonal to DOCK180
Host species	Rabbit
Tested applications	Suitable for: ICC/IF, WB, IHC-P
Species reactivity	Reacts with: Mouse, Rat, Human
Immunogen	Synthetic peptide corresponding to Human DOCK180 aa 1852-1865. Sequence: TTRKQASVDSGVQ Database link: Q14185 Run BLAST with Run BLAST with
Positive control	WB: HEK-293T whole cell lysate. C8D30 , NIH/3T3 , Raw264.7 , C2C12 whole cell extracts. PC-12 whole cell extracts. ICC/IF: A431 cells IHC-P: Lung cancer.
General notes	<p>The Life Science industry has been in the grips of a reproducibility crisis for a number of years. Abcam is leading the way in addressing this with our range of recombinant monoclonal antibodies and knockout edited cell lines for gold-standard validation. Please check that this product meets your needs before purchasing.</p> <p>If you have any questions, special requirements or concerns, please send us an inquiry and/or contact our Support team ahead of purchase. Recommended alternatives for this product can be found below, along with publications, customer reviews and Q&As</p>

Properties

Form	Liquid
Storage instructions	Shipped at 4°C. Store at +4°C short term (1-2 weeks). Upon delivery aliquot. Store at -20°C or -80°C. Avoid freeze / thaw cycle.
Storage buffer	pH: 7.00 Preservative: 0.01% Thimerosal (merthiolate) Constituents: 79.99% PBS, 20% Glycerol (glycerin, glycerine)
Purity	Immunogen affinity purified
Clonality	Polyclonal

Isotype

IgG

Applications

The Abpromise guarantee

Our **Abpromise guarantee** covers the use of ab97325 in the following tested applications.

The application notes include recommended starting dilutions; optimal dilutions/concentrations should be determined by the end user.

Application	Abreviews	Notes
ICC/IF		1/100 - 1/1000.
WB		1/500 - 1/3000. Predicted molecular weight: 215 kDa.
IHC-P		1/100 - 1/1000.

Target

Function

Involved in cytoskeletal rearrangements required for phagocytosis of apoptotic cells and cell motility. Functions as a guanine nucleotide exchange factor (GEF), which activates Rac Rho small GTPases by exchanging bound GDP for free GTP. Its GEF activity may be enhanced by ELMO1.

Tissue specificity

Highly expressed in placenta, lung, kidney, pancreas and ovary. Expressed at intermediate level in thymus, testes and colon.

Sequence similarities

Belongs to the DOCK family.
Contains 1 DHR-1 (CZH-1) domain.
Contains 1 DHR-2 (CZH-2) domain.
Contains 1 SH3 domain.

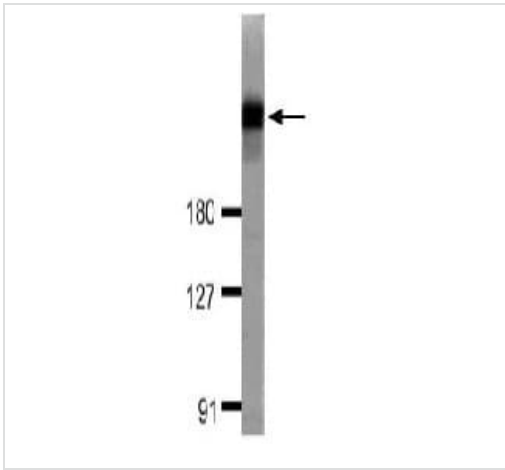
Domain

The DHR-2 domain is necessary and sufficient for the GEF activity.

Cellular localization

Cytoplasm. Membrane. Recruited to membranes via its interaction with phosphatidylinositol 3,4,5-triphosphate.

Images

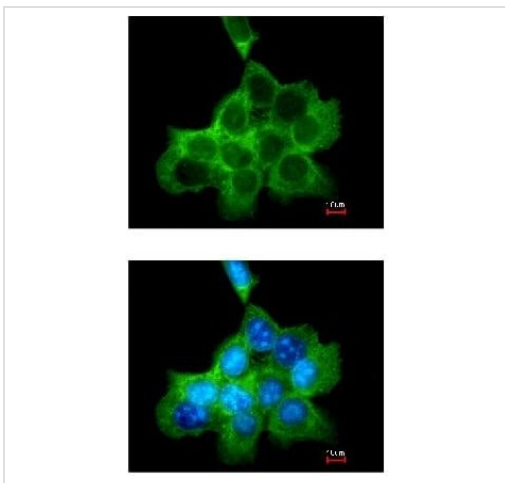


Western blot - Anti-DOCK180 antibody (ab97325)

Anti-DOCK180 antibody (ab97325) at 1/1000 dilution + HEK-293T whole cell lysate at 30 µg

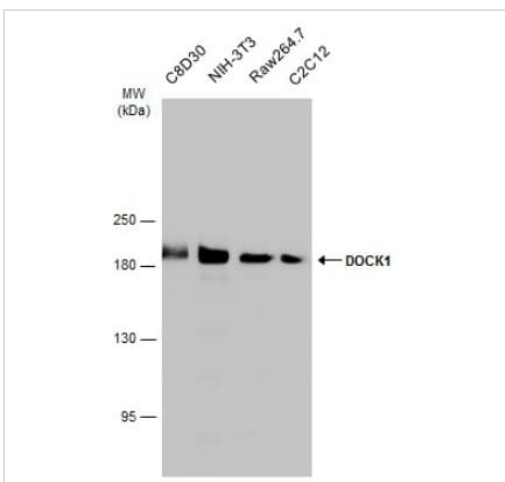
Predicted band size: 215 kDa

7.5% SDS Page



Immunocytochemistry/ Immunofluorescence - Anti-DOCK180 antibody (ab97325)

Immunofluorescence analysis of DOCK180 in methanol fixed A431 using ab97325 at a 1/200 dilution.



Western blot - Anti-DOCK180 antibody (ab97325)

All lanes : Anti-DOCK180 antibody (ab97325) at 1/1000 dilution

Lane 1 : C8D30 whole cell extract

Lane 2 : NIH/3T3 whole cell extract

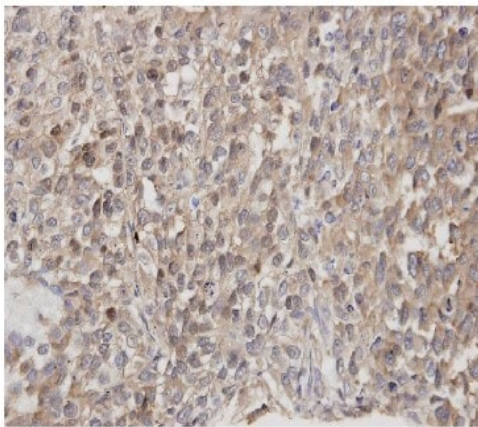
Lane 3 : Raw264.7 whole cell extract

Lane 4 : C2C12 whole cell extract

Lysates/proteins at 30 µg per lane.

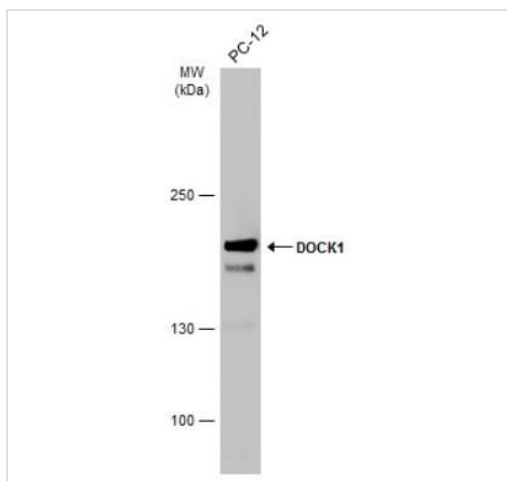
Predicted band size: 215 kDa

5% SDS-PAGE.



Immunohistochemical analysis of DOCK180 in paraffin embedded Lung cancer using ab97325 at a 1/100 dilution.

Immunohistochemistry (Formalin/PFA-fixed paraffin-embedded sections) - Anti-DOCK180 antibody (ab97325)



Anti-DOCK180 antibody (ab97325) at 1/1000 dilution + PC-12 whole cell extract at 30 µg

Predicted band size: 215 kDa

5% SDS-PAGE

Western blot - Anti-DOCK180 antibody (ab97325)

Please note: All products are "FOR RESEARCH USE ONLY. NOT FOR USE IN DIAGNOSTIC PROCEDURES"

Our Abpromise to you: Quality guaranteed and expert technical support

- Replacement or refund for products not performing as stated on the datasheet
- Valid for 12 months from date of delivery
- Response to your inquiry within 24 hours
- We provide support in Chinese, English, French, German, Japanese and Spanish
- Extensive multi-media technical resources to help you
- We investigate all quality concerns to ensure our products perform to the highest standards

If the product does not perform as described on this datasheet, we will offer a refund or replacement. For full details of the Abpromise, please visit <https://www.abcam.com/abpromise> or contact our technical team.

Terms and conditions

- Guarantee only valid for products bought direct from Abcam or one of our authorized distributors