



Product datasheet

Anti-Dopamine beta Hydroxylase antibody ab19353

★★★★★ [2 Abreviews](#) [8 References](#) [2 Images](#)

Overview

Product name	Anti-Dopamine beta Hydroxylase antibody
Description	Sheep polyclonal to Dopamine beta Hydroxylase
Host species	Sheep
Tested applications	Suitable for: ICC/IF, IHC-P
Species reactivity	Reacts with: Rat
Immunogen	Synthetic peptide corresponding to Rat Dopamine beta Hydroxylase aa 43-62. Sequence: SEPPESPFPYHIPLDPEGTL <div>  Run BLAST with  Run BLAST with </div>
General notes	<p>Detects human, bovine, rat and mouse DBH. It is not effective for immunohistochemistry in human brain</p> <p>The Life Science industry has been in the grips of a reproducibility crisis for a number of years. Abcam is leading the way in addressing this with our range of recombinant monoclonal antibodies and knockout edited cell lines for gold-standard validation. Please check that this product meets your needs before purchasing.</p> <p>If you have any questions, special requirements or concerns, please send us an inquiry and/or contact our Support team ahead of purchase. Recommended alternatives for this product can be found below, along with publications, customer reviews and Q&As</p>

Properties

Form	Liquid
Storage instructions	Shipped at 4°C. Upon delivery aliquot and store at -20°C or -80°C. Avoid repeated freeze / thaw cycles.
Storage buffer	Preservative: 0.05% Sodium azide
Purity	Whole antiserum
Clonality	Polyclonal

Applications

The Abpromise guarantee

Our **Abpromise guarantee** covers the use of ab19353 in the following tested applications.

The application notes include recommended starting dilutions; optimal dilutions/concentrations should be determined by the end user.

Application	Abreviews	Notes
ICC/IF		1/5000.
IHC-P		1/2000.

Target

Function

Conversion of dopamine to noradrenaline.

Pathway

Catecholamine biosynthesis; (R)-noradrenaline biosynthesis; (R)-noradrenaline from dopamine: step 1/1.

Involvement in disease

Defects in DBH are the cause of dopamine beta-hydroxylase deficiency (DBH deficiency) [MIM:223360]; also known as norepinephrine deficiency or noradrenaline deficiency. This disorder is characterized by profound deficits in autonomic and cardiovascular function, but apparently only subtle signs, if any, of central nervous system dysfunction.

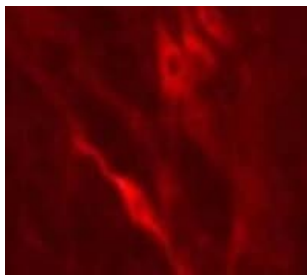
Sequence similarities

Belongs to the copper type II ascorbate-dependent monooxygenase family.
Contains 1 DOMON domain.

Cellular localization

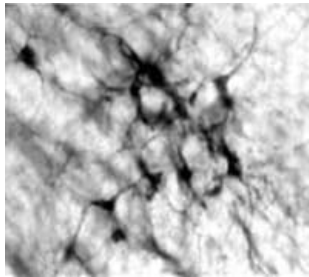
Cytoplasmic vesicle > secretory vesicle lumen. Cytoplasmic vesicle > secretory vesicle > chromaffin granule lumen and Cytoplasmic vesicle > secretory vesicle membrane. Cytoplasmic vesicle > secretory vesicle > chromaffin granule membrane.

Images



Immunofluorescent staining of DBH in rat neuron cells using ab19353.

Immunocytochemistry/ Immunofluorescence - Anti-Dopamine beta Hydroxylase antibody (ab19353)



Immunofluorescent stain of DBH in rat brain tissue using ab19353.

Immunohistochemistry (Formalin/PFA-fixed paraffin-embedded sections) - Anti-Dopamine beta Hydroxylase antibody (ab19353)

Please note: All products are "FOR RESEARCH USE ONLY. NOT FOR USE IN DIAGNOSTIC PROCEDURES"

Our Abpromise to you: Quality guaranteed and expert technical support

- Replacement or refund for products not performing as stated on the datasheet
- Valid for 12 months from date of delivery
- Response to your inquiry within 24 hours
- We provide support in Chinese, English, French, German, Japanese and Spanish
- Extensive multi-media technical resources to help you
- We investigate all quality concerns to ensure our products perform to the highest standards

If the product does not perform as described on this datasheet, we will offer a refund or replacement. For full details of the Abpromise, please visit <https://www.abcam.com/abpromise> or contact our technical team.

Terms and conditions

- Guarantee only valid for products bought direct from Abcam or one of our authorized distributors