

Product datasheet

Anti-Dopamine Receptor D1 antibody [EP1560Y] ab81296

Recombinant RabMAb

★★★★☆ **4 Abreviews** **16 References** [5 Images](#)

Overview

Product name	Anti-Dopamine Receptor D1 antibody [EP1560Y]
Description	Rabbit monoclonal [EP1560Y] to Dopamine Receptor D1
Host species	Rabbit
Tested applications	Suitable for: WB Unsuitable for: Flow Cyt or ICC/IF
Species reactivity	Reacts with: Mouse, Rat, Guinea pig, Human
Immunogen	Synthetic peptide within Human Dopamine Receptor D1 aa 400 to the C-terminus (C terminal). The exact sequence is proprietary. Database link: P21728
Positive control	WB: SH-SY5Y cell lysate, human fetal kidney, guinea pig brain, mouse and rat brain and kidney tissue lysates.
General notes	This product is a recombinant monoclonal antibody, which offers several advantages including: <ul style="list-style-type: none"> - High batch-to-batch consistency and reproducibility - Improved sensitivity and specificity - Long-term security of supply - Animal-free production For more information see here . Our RabMAb [®] technology is a patented hybridoma-based technology for making rabbit monoclonal antibodies. For details on our patents, please refer to RabMAb[®] patents .

Properties

Form	Liquid
Storage instructions	Shipped at 4°C. Store at +4°C short term (1-2 weeks). Upon delivery aliquot. Store at -20°C. Avoid freeze / thaw cycle.
Storage buffer	pH: 7.2 Preservative: 0.01% Sodium azide Constituents: 40% Glycerol (glycerin, glycerine), 0.05% BSA, 59% PBS
Purity	Protein A purified

Clonality	Monoclonal
Clone number	EP1560Y
Isotype	IgG

Applications

The Abpromise guarantee Our **Abpromise guarantee** covers the use of ab81296 in the following tested applications. The application notes include recommended starting dilutions; optimal dilutions/concentrations should be determined by the end user.

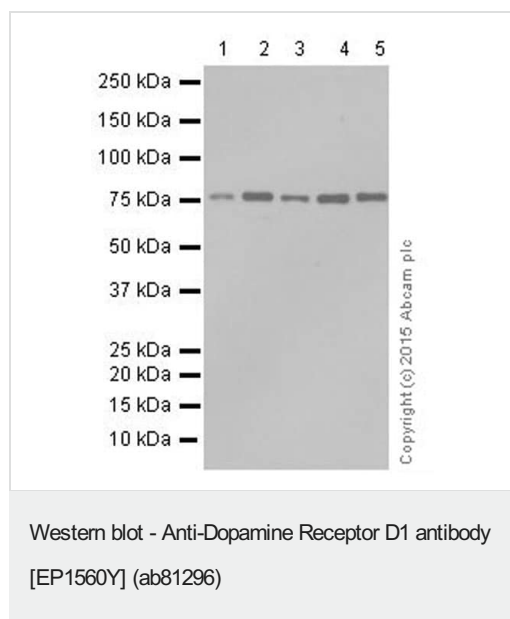
Application	Abreviews	Notes
WB		1/1000 - 1/10000. Predicted molecular weight: 49 kDa.

Application notes Is unsuitable for Flow Cyt or ICC/IF.

Target

Function	Dopamine receptor whose activity is mediated by G proteins which activate adenylyl cyclase.
Tissue specificity	Detected in caudate, nucleus accumbens and in the olfactory tubercle.
Sequence similarities	Belongs to the G-protein coupled receptor 1 family.
Cellular localization	Cell membrane. Endoplasmic reticulum membrane. Transport from the endoplasmic reticulum to the cell surface is regulated by interaction with DNAJC14.

Images



All lanes : Anti-Dopamine Receptor D1 antibody [EP1560Y] (ab81296) at 1/1000 dilution (purified)

Lane 1 : Mouse brain tissue lysate

Lane 2 : Mouse kidney tissue lysate

Lane 3 : Rat brain tissue lysate

Lane 4 : Rat kidney tissue lysate

Lane 5 : Guinea pig brain tissue lysate

Lysates/proteins at 10 µg per lane.

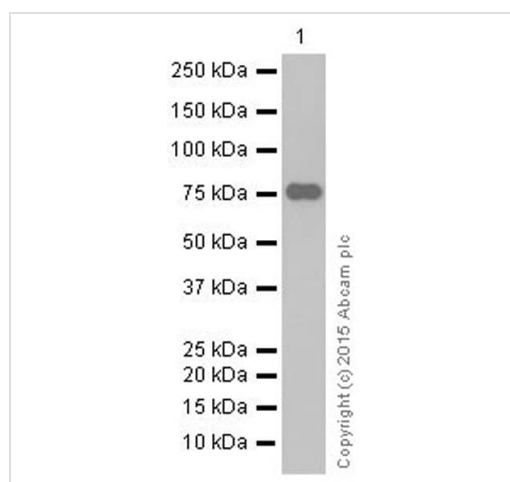
Secondary

All lanes : Rabbit monoclonal [EP1560Y] to Dopamine Receptor D1 (ab81296) at 1/20000 dilution

Predicted band size: 49 kDa

Observed band size: 75 kDa

Blocking and dilution buffer: 5% NFDM /TBST.



Western blot - Anti-Dopamine Receptor D1 antibody [EP1560Y] (ab81296)

Anti-Dopamine Receptor D1 antibody [EP1560Y] (ab81296) at 1/5000 dilution (purified) + SH-SY5Y whole cell lysate at 10 µg

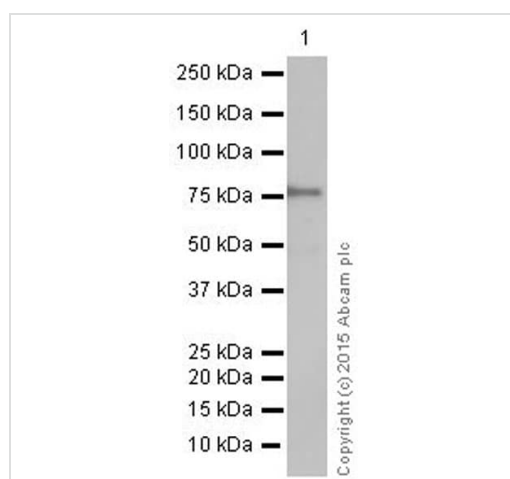
Secondary

Goat Anti-Rabbit IgG H&L (HRP) ([ab97051](#)) at 1/20000 dilution

Predicted band size: 49 kDa

Observed band size: 75 kDa

Blocking and dilution buffer: 5% NFDM /TBST.



Western blot - Anti-Dopamine Receptor D1 antibody [EP1560Y] (ab81296)

Anti-Dopamine Receptor D1 antibody [EP1560Y] (ab81296) at 1/1000 dilution (purified) + Human fetal kidney tissue lysate at 10 µg

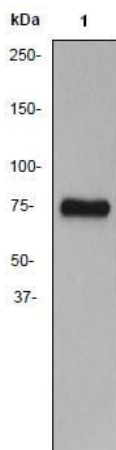
Secondary

Goat Anti-Rabbit IgG H&L (HRP) ([ab97051](#)) at 1/20000 dilution

Predicted band size: 49 kDa

Observed band size: 75 kDa

Blocking and dilution buffer: 5% NFDM /TBST.



Western blot - Anti-Dopamine Receptor D1 antibody
[EP1560Y] (ab81296)

Anti-Dopamine Receptor D1 antibody [EP1560Y] (ab81296) at
1/20000 dilution (unpurified) + SH-SY5Y cell lysate at 10 µg

Secondary

HRP-conjugated goat anti-rabbit IgG at 1/2000 dilution

Predicted band size: 49 kDa

Observed band size: 75 kDa

Why choose a recombinant antibody?



Research with confidence
Consistent and reproducible results



Long-term and scalable supply
Recombinant technology



Success from the first experiment
Confirmed specificity



Ethical standards compliant
Animal-free production

Anti-Dopamine Receptor D1 antibody [EP1560Y]
(ab81296)

Please note: All products are "FOR RESEARCH USE ONLY. NOT FOR USE IN DIAGNOSTIC PROCEDURES"

Our Abpromise to you: Quality guaranteed and expert technical support

- Replacement or refund for products not performing as stated on the datasheet
- Valid for 12 months from date of delivery
- Response to your inquiry within 24 hours
- We provide support in Chinese, English, French, German, Japanese and Spanish
- Extensive multi-media technical resources to help you
- We investigate all quality concerns to ensure our products perform to the highest standards

If the product does not perform as described on this datasheet, we will offer a refund or replacement. For full details of the Abpromise, please visit <https://www.abcam.com/abpromise> or contact our technical team.

Terms and conditions

- Guarantee only valid for products bought direct from Abcam or one of our authorized distributors