


Product datasheet

Anti-Dopamine Receptor D1 antibody [SG2-D1 α] ab78021

★★★★★ [6 Abreviews](#) [6 References](#) [1 Image](#)

Overview

Product name	Anti-Dopamine Receptor D1 antibody [SG2-D1 α]
Description	Mouse monoclonal [SG2-D1 α] to Dopamine Receptor D1
Host species	Mouse
Tested applications	Suitable for: WB
Species reactivity	Reacts with: Mouse Predicted to work with: Rat, Sheep  Does not react with: Rabbit, Cow, Dog, Human, Pig
Immunogen	Recombinant fragment corresponding to Rat Dopamine Receptor D1 (C terminal).
Positive control	Mouse brain lysate; rat caudate tissue.
General notes	<p>This antibody clone is manufactured by Abcam. If you require a custom buffer formulation or conjugation for your experiments, please contact orders@abcam.com.</p> <p>The Life Science industry has been in the grips of a reproducibility crisis for a number of years. Abcam is leading the way in addressing this with our range of recombinant monoclonal antibodies and knockout edited cell lines for gold-standard validation. Please check that this product meets your needs before purchasing.</p> <p>If you have any questions, special requirements or concerns, please send us an inquiry and/or contact our Support team ahead of purchase. Recommended alternatives for this product can be found below, along with publications, customer reviews and Q&As</p>

Properties

Form	Liquid
Storage instructions	Shipped at 4°C. Store at +4°C.
Storage buffer	pH: 7.40 Preservative: 0.02% Sodium azide Constituents: PBS, 6.97% L-Arginine
Purity	Protein G purified
Clonality	Monoclonal

Clone number SG2-D1a

Isotype IgG2b

Applications

The Abpromise guarantee Our **Abpromise guarantee** covers the use of ab78021 in the following tested applications. The application notes include recommended starting dilutions; optimal dilutions/concentrations should be determined by the end user.

Application	Abreviews	Notes
WB	★★★★★ (1)	1/250 - 1/500. Predicted molecular weight: 49 kDa.

Target

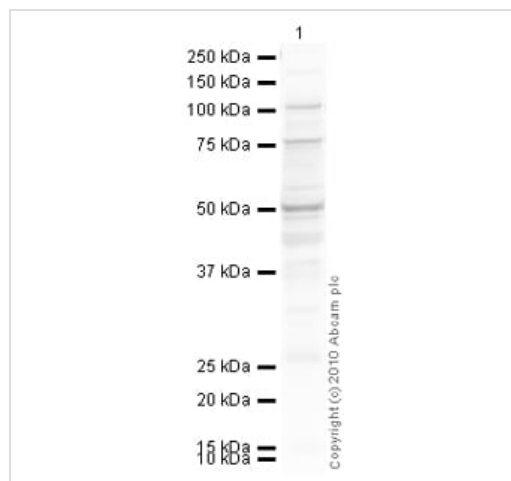
Function Dopamine receptor whose activity is mediated by G proteins which activate adenylyl cyclase.

Tissue specificity Detected in caudate, nucleus accumbens and in the olfactory tubercle.

Sequence similarities Belongs to the G-protein coupled receptor 1 family.

Cellular localization Cell membrane. Endoplasmic reticulum membrane. Transport from the endoplasmic reticulum to the cell surface is regulated by interaction with DNAJC14.

Images



Western blot - Anti-Dopamine Receptor D1 antibody [SG2-D1a] (ab78021)

Anti-Dopamine Receptor D1 antibody [SG2-D1a] (ab78021) at 2 µg/ml + Brain (Mouse) Tissue Lysate at 20 µg

Secondary

Goat Anti-Mouse IgG H&L (HRP) preadsorbed ([ab97040](#)) at 1/5000 dilution

Developed using the ECL technique.

Performed under reducing conditions.

Predicted band size: 49 kDa

Observed band size: 50 kDa

Additional bands at: 100 kDa, 75 kDa. We are unsure as to the identity of these extra bands.

Exposure time: 4 minutes

Please note: All products are "FOR RESEARCH USE ONLY. NOT FOR USE IN DIAGNOSTIC PROCEDURES"

Our Abpromise to you: Quality guaranteed and expert technical support

- Replacement or refund for products not performing as stated on the datasheet
- Valid for 12 months from date of delivery
- Response to your inquiry within 24 hours
- We provide support in Chinese, English, French, German, Japanese and Spanish
- Extensive multi-media technical resources to help you
- We investigate all quality concerns to ensure our products perform to the highest standards

If the product does not perform as described on this datasheet, we will offer a refund or replacement. For full details of the Abpromise, please visit <https://www.abcam.com/abpromise> or contact our technical team.

Terms and conditions

- Guarantee only valid for products bought direct from Abcam or one of our authorized distributors