


### Anti-DPP3 antibody ab97437

★★★★★ [1 Abreviews](#) [1 References](#) [3 Images](#)

#### Overview

<b>Product name</b>	Anti-DPP3 antibody
<b>Description</b>	Rabbit polyclonal to DPP3
<b>Host species</b>	Rabbit
<b>Tested applications</b>	<b>Suitable for:</b> WB, IHC-P, ICC/IF
<b>Species reactivity</b>	<b>Reacts with:</b> Human <b>Predicted to work with:</b> Mouse, Rat, Cow 
<b>Immunogen</b>	Recombinant protein fragment corresponding to a region within amino acids 138 and 435 of DPP3 (NP_005691).
<b>Positive control</b>	WB: 293T, A431, H1299, HeLa, HepG2, MOLT4 and Raji cell lysates; IHC: AGS xenograft. ICC/IF: HeLa cells.
<b>General notes</b>	<p>The Life Science industry has been in the grips of a reproducibility crisis for a number of years. Abcam is leading the way in addressing this with our range of recombinant monoclonal antibodies and knockout edited cell lines for gold-standard validation. Please check that this product meets your needs before purchasing.</p> <p>If you have any questions, special requirements or concerns, please send us an inquiry and/or contact our Support team ahead of purchase. Recommended alternatives for this product can be found below, along with publications, customer reviews and Q&amp;As</p>

#### Properties

<b>Form</b>	Liquid
<b>Storage instructions</b>	Shipped at 4°C. Upon delivery aliquot and store at -20°C or -80°C. Avoid repeated freeze / thaw cycles.
<b>Storage buffer</b>	pH: 7.00 Preservative: 0.01% Thimerosal (merthiolate) Constituents: 1.21% Tris, 0.75% Glycine, 10% Glycerol (glycerin, glycerine)
<b>Purity</b>	Immunogen affinity purified
<b>Clonality</b>	Polyclonal
<b>Isotype</b>	IgG

## Applications

### The Abpromise guarantee

Our **Abpromise guarantee** covers the use of ab97437 in the following tested applications.

The application notes include recommended starting dilutions; optimal dilutions/concentrations should be determined by the end user.

Application	Abreviews	Notes
WB		1/500 - 1/3000. Predicted molecular weight: 83 kDa.
IHC-P		1/100 - 1/250.
ICC/IF	★★★★★ (1)	1/100 - 1/200.

## Target

### Function

Cleaves Arg-Arg-beta-naphthylamide.

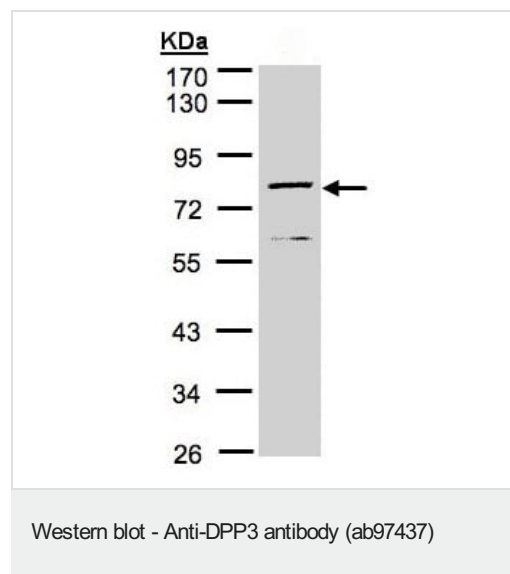
### Sequence similarities

Belongs to the peptidase M49 family.

### Cellular localization

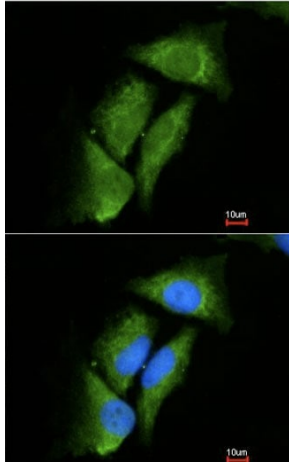
Cytoplasm.

## Images



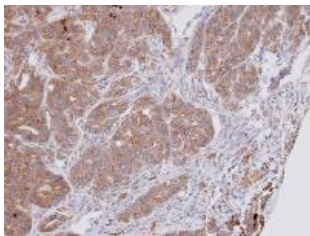
Anti-DPP3 antibody (ab97437) at 1/1000 dilution + MOLT4 whole cell lysate at 30 µg

**Predicted band size:** 83 kDa



Top: immunofluorescence analysis of paraformaldehyde-fixed HeLa cells, using ab97437 at 1/200 dilution. Bottom: image merged with DNA probe.

Immunocytochemistry/ Immunofluorescence - Anti-DPP3 antibody (ab97437)



Immunohistochemical analysis of paraffin-embedded AGS xenograft, using ab97437 at 1/100 dilution.

Immunohistochemistry (Formalin/PFA-fixed paraffin-embedded sections) - Anti-DPP3 antibody (ab97437)

**Please note:** All products are "FOR RESEARCH USE ONLY. NOT FOR USE IN DIAGNOSTIC PROCEDURES"

### Our Abpromise to you: Quality guaranteed and expert technical support

- Replacement or refund for products not performing as stated on the datasheet
- Valid for 12 months from date of delivery
- Response to your inquiry within 24 hours
- We provide support in Chinese, English, French, German, Japanese and Spanish
- Extensive multi-media technical resources to help you

- We investigate all quality concerns to ensure our products perform to the highest standards

If the product does not perform as described on this datasheet, we will offer a refund or replacement. For full details of the Abpromise, please visit <https://www.abcam.com/abpromise> or contact our technical team.

### **Terms and conditions**

---

- Guarantee only valid for products bought direct from Abcam or one of our authorized distributors