




Product datasheet

Anti-DREAM antibody ab3474

[2 References](#) [1 Image](#)

Overview

Product name	Anti-DREAM antibody
Description	Rabbit polyclonal to DREAM
Host species	Rabbit
Specificity	Detects KCHIP 3 from rabbit cerebellar granule cells.
Tested applications	Suitable for: ICC/IF
Species reactivity	Reacts with: Rabbit Predicted to work with: Mouse 
Immunogen	Synthetic peptide corresponding to Mouse DREAM aa 30-45. Sequence: IKWQRPRFTRQALMRC (Peptide available as ab5866)  Run BLAST with  Run BLAST with
Positive control	ICC/IF: Rabbit granule cells
General notes	<p>The Life Science industry has been in the grips of a reproducibility crisis for a number of years. Abcam is leading the way in addressing this with our range of recombinant monoclonal antibodies and knockout edited cell lines for gold-standard validation. Please check that this product meets your needs before purchasing.</p> <p>If you have any questions, special requirements or concerns, please send us an inquiry and/or contact our Support team ahead of purchase. Recommended alternatives for this product can be found below, along with publications, customer reviews and Q&As</p>

Properties

Form	Liquid
Storage instructions	Shipped at 4°C. Store at +4°C short term (1-2 weeks). Upon delivery aliquot. Store at -20°C or -80°C. Avoid freeze / thaw cycle.
Storage buffer	Preservative: 0.05% Sodium azide Constituents: 0.1% BSA, 99% PBS
Purity	Immunogen affinity purified

Clonality	Polyclonal
Isotype	IgG

Applications

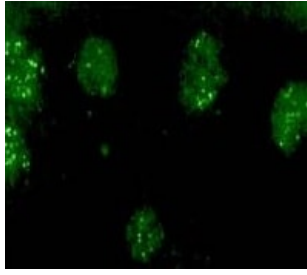
The Abpromise guarantee Our **Abpromise guarantee** covers the use of ab3474 in the following tested applications. The application notes include recommended starting dilutions; optimal dilutions/concentrations should be determined by the end user.

Application	Abreviews	Notes
ICC/IF		Use at an assay dependent concentration.

Target

Function	<p>Calcium-dependent transcriptional repressor that binds to the DRE element of genes including PDYN and FOS. Affinity for DNA is reduced upon binding to calcium and enhanced by binding to magnesium. Seems to be involved in nociception.</p> <p>Regulatory subunit of Kv4/D (Shal)-type voltage-gated rapidly inactivating A-type potassium channels, such as KCND2/Kv4.2 and KCND3/Kv4.3. Modulates channel expression at the cell membrane, gating characteristics, inactivation kinetics and rate of recovery from inactivation in a calcium-dependent and isoform-specific manner.</p> <p>May play a role in the regulation of PSEN2 proteolytic processing and apoptosis. Together with PSEN2 involved in modulation of beta-amyloid formation.</p>
Tissue specificity	Highly expressed in brain. Widely expressed at lower levels. Expression levels are elevated in brain cortex regions affected by Alzheimer disease.
Sequence similarities	<p>Belongs to the recoverin family.</p> <p>Contains 4 EF-hand domains.</p>
Post-translational modifications	<p>Palmitoylated. Palmitoylation enhances association with the plasma membrane.</p> <p>Proteolytically cleaved by caspase-3.</p> <p>Phosphorylation at Ser-63 inhibits cleavage by CASP3.</p>
Cellular localization	Cytoplasm. Cell membrane. Endoplasmic reticulum. Golgi apparatus. Nucleus. Also membrane-bound, associated with the plasma membrane (PubMed:15485870). In the presence of PSEN2 associated with the endoplasmic reticulum and Golgi. The sumoylated form is present only in the nucleus.

Images



Immunolocalization of DREAM in Rabbit granule cells using ab3474.

Immunocytochemistry/ Immunofluorescence - Anti-DREAM antibody (ab3474)

Please note: All products are "FOR RESEARCH USE ONLY. NOT FOR USE IN DIAGNOSTIC PROCEDURES"

Our Abpromise to you: Quality guaranteed and expert technical support

- Replacement or refund for products not performing as stated on the datasheet
- Valid for 12 months from date of delivery
- Response to your inquiry within 24 hours
- We provide support in Chinese, English, French, German, Japanese and Spanish
- Extensive multi-media technical resources to help you
- We investigate all quality concerns to ensure our products perform to the highest standards

If the product does not perform as described on this datasheet, we will offer a refund or replacement. For full details of the Abpromise, please visit <https://www.abcam.com/abpromise> or contact our technical team.

Terms and conditions

- Guarantee only valid for products bought direct from Abcam or one of our authorized distributors