


Product datasheet

Anti-Drebrin antibody [mAbcam60932] α b60932

KO VALIDATED

★★★★★ [4 Abreviews](#) [3 References](#) [4 Images](#)

Overview

Product name	Anti-Drebrin antibody [mAbcam60932]
Description	Mouse monoclonal [mAbcam60932] to Drebrin
Host species	Mouse
Tested applications	Suitable for: WB, Flow Cyt (Intra)
Species reactivity	Reacts with: Rat, Human Predicted to work with: Mouse, Chicken, Quail 
Immunogen	Recombinant fragment corresponding to Human Drebrin aa 450-600. (Peptide available as ab104801)
Positive control	This antibody gave a positive signal in HeLa, SHSY-5Y and MALME-3M whole cell lysates, and in the following tissue lysates: Human Cortex, Rat Cortex, Rat Hippocampus, Human Melanoma. Flow Cyt (Intra): SHSY-5Y cells
General notes	<p>This antibody clone is manufactured by Abcam. If you require a custom buffer formulation or conjugation for your experiments, please contact orders@abcam.com.</p> <p>The Life Science industry has been in the grips of a reproducibility crisis for a number of years. Abcam is leading the way in addressing this with our range of recombinant monoclonal antibodies and knockout edited cell lines for gold-standard validation. Please check that this product meets your needs before purchasing.</p> <p>If you have any questions, special requirements or concerns, please send us an inquiry and/or contact our Support team ahead of purchase. Recommended alternatives for this product can be found below, along with publications, customer reviews and Q&As</p>

Properties

Form	Liquid
Storage instructions	Shipped at 4°C. Store at +4°C short term (1-2 weeks). Store at -20°C long term.
Storage buffer	pH: 7.40 Preservative: 0.02% Sodium azide Constituents: PBS, 6.97% L-Arginine
Purity	Protein G purified

Clonality	Monoclonal
Clone number	mAbcam60932
Myeloma	Sp2/0-Ag14
Isotype	IgG1

Applications

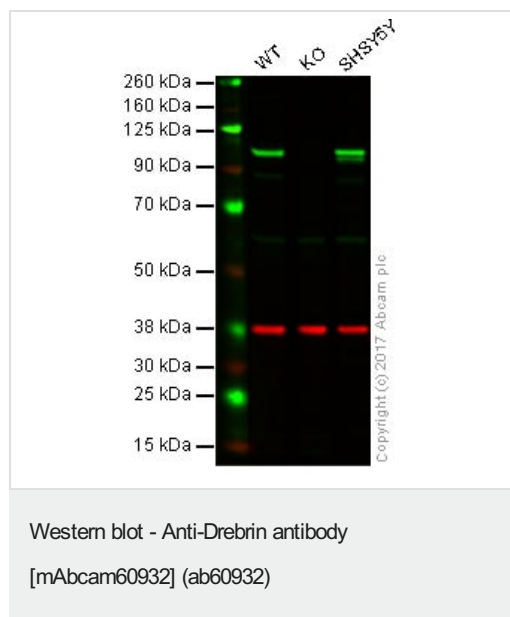
The Abpromise guarantee Our **Abpromise guarantee** covers the use of ab60932 in the following tested applications. The application notes include recommended starting dilutions; optimal dilutions/concentrations should be determined by the end user.

Application	Abreviews	Notes
WB		Use a concentration of 5 µg/ml. Detects a band of approximately 110 kDa (predicted molecular weight: 120 kDa).
Flow Cyt (Intra)		Use 1µg for 10 ⁶ cells. ab170190 - Mouse monoclonal IgG1, is suitable for use as an isotype control with this antibody.

Target

Function	Drebrins might play some role in cell migration, extension of neuronal processes and plasticity of dendrites, respectively.
Tissue specificity	Brain neurons. Also found in the heart, placenta, skeletal muscle, kidney and pancreas.
Sequence similarities	Contains 1 ADF-H domain.
Cellular localization	Cytoplasm.

Images



Lane 1: Wild-type HAP1 whole cell lysate (20 µg)

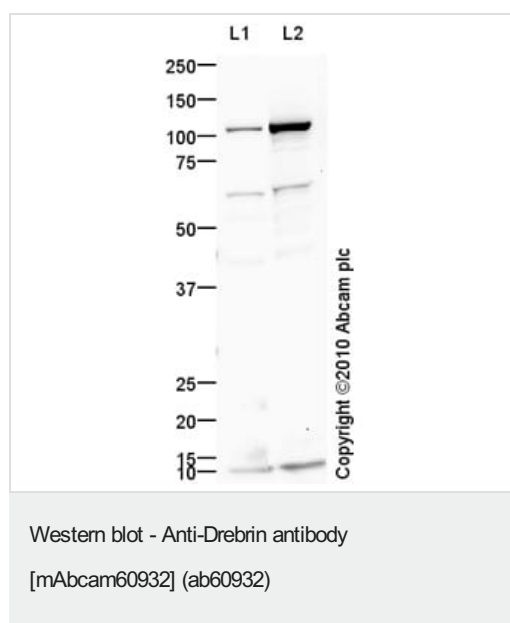
Lane 2: Drebrin knockout HAP1 whole cell lysate (20 µg)

Lane 3: SH-SY5Y whole cell lysate (20 µg)

Lanes 1 - 3: Merged signal (red and green). Green - ab60932 observed at 120 kDa. Red - loading control, **ab181602**, observed at 37 kDa.

ab60932 was shown to specifically react with Drebrin in wild-type cells as signal was lost in Drebrin knockout cells. Wild-type and Drebrin knockout samples were subjected to SDS-PAGE. Ab60932 and **ab181602** (Rabbit anti-GAPDH loading control) were incubated overnight at 4°C at 5 µg/ml and 1/20000 dilution respectively. Blots were developed with Goat anti-Mouse IgG H&L (IRDye® 800CW) preabsorbed **ab216772** and Goat anti-Rabbit IgG H&L (IRDye® 680RD) preabsorbed **ab216777** secondary

antibodies at 1/20000 dilution for 1 hour at room temperature before imaging.



All lanes : Anti-Drebrin antibody [mAbcam60932] (ab60932) at 10 µg/ml

Lane 1 : HeLa (Human epithelial carcinoma cell line) Whole Cell Lysate

Lane 2 : SHSY-5Y (Human neuroblastoma cell line) Whole Cell Lysate

Lysates/proteins at 10 µg per lane.

Secondary

All lanes : Goat polyclonal to Mouse IgG - H&L - Pre-Adsorbed (HRP) at 1/3000 dilution

Developed using the ECL technique.

Performed under reducing conditions.

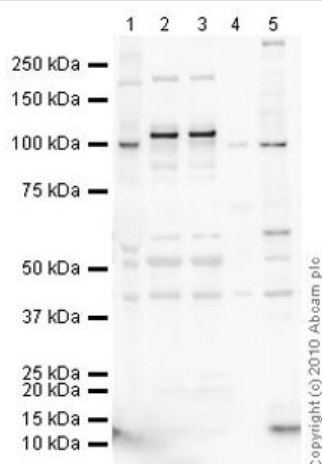
Predicted band size: 120 kDa

Observed band size: 110 kDa

Additional bands at: 10 kDa, 65 kDa. We are unsure as to the identity of these extra bands.

Exposure time: 8 minutes

Ab60932 detects a band around 110-kDa. While this differs to its predicted molecular weight of 71-kDa, it is consistent with what has been described in the literature(PMID:10604653).



Western blot - Anti-Drebrin antibody
[mAbcam60932] (ab60932)

All lanes : Anti-Drebrin antibody [mAbcam60932] (ab60932) at 10 μ g/ml

Lane 1 : Human Cortex Neuronal cell lysate

Lane 2 : Rat Cortex Neuronal cell lysate

Lane 3 : Rat Hippocampus Tissue Lysate

Lane 4 : Human skin tumor tissue lysate (melanoma) - total protein
([ab29339](#))

Lane 5 : Malme 3M (Human melanoma cells) Whole Cell Lysate

Lysates/proteins at 10 μ g per lane.

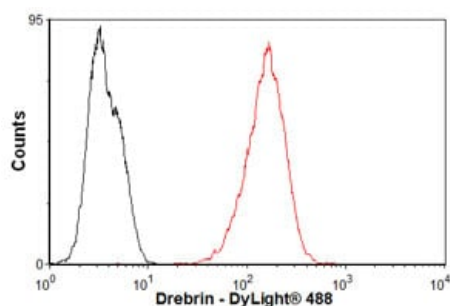
Secondary

All lanes : Goat Anti-Mouse IgG H&L (HRP) preadsorbed
([ab97040](#)) at 1/5000 dilution

Predicted band size: 120 kDa

Observed band size: 100,120 kDa

Additional bands at: 200 kDa, 45 kDa, 50 kDa, 60 kDa. We are unsure as to the identity of these extra bands.



Flow Cytometry (Intracellular) - Anti-Drebrin antibody
[mAbcam60932] (ab60932)

Overlay histogram showing SHSY-5Y cells stained with ab60932 (red line). The cells were fixed with 4% paraformaldehyde (10 min) and then permeabilized with 0.1% PBS-Tween for 20 min. The cells were then incubated in 1x PBS / 10% normal goat serum / 0.3M glycine to block non-specific protein-protein interactions followed by the antibody (ab60932, 1 μ g/1x10⁶ cells) for 30 min at 22°C. The secondary antibody used was DyLight® 488 goat anti-mouse IgG (H+L) ([ab96879](#)) at 1/500 dilution for 30 min at 22°C. Isotype control antibody (black line) was mouse IgG1 [ICIGG1] ([ab91353](#), 1 μ g/1x10⁶ cells) used under the same conditions. Acquisition of >5,000 events was performed. This antibody gave a positive signal

in SHSY-5Y cells fixed with 80% methanol (5 min)/permeabilized with 0.1% PBS-Tween for 20 min used under the same conditions.

Please note: All products are "FOR RESEARCH USE ONLY. NOT FOR USE IN DIAGNOSTIC PROCEDURES"

Our Abpromise to you: Quality guaranteed and expert technical support

- Replacement or refund for products not performing as stated on the datasheet
- Valid for 12 months from date of delivery
- Response to your inquiry within 24 hours
- We provide support in Chinese, English, French, German, Japanese and Spanish
- Extensive multi-media technical resources to help you
- We investigate all quality concerns to ensure our products perform to the highest standards

If the product does not perform as described on this datasheet, we will offer a refund or replacement. For full details of the Abpromise, please visit <https://www.abcam.com/abpromise> or contact our technical team.

Terms and conditions

- Guarantee only valid for products bought direct from Abcam or one of our authorized distributors