

## Product datasheet

# Anti-DUSP22 antibody ab70124

[1 References](#) [2 Images](#)

### Overview

---

<b>Product name</b>	Anti-DUSP22 antibody
<b>Description</b>	Rabbit polyclonal to DUSP22
<b>Host species</b>	Rabbit
<b>Tested applications</b>	<b>Suitable for:</b> ICC/IF, WB
<b>Species reactivity</b>	<b>Reacts with:</b> Mouse, Human
<b>Immunogen</b>	Synthetic peptide derived from an internal sequence of human DUSP22.
<b>General notes</b>	<p>The Life Science industry has been in the grips of a reproducibility crisis for a number of years. Abcam is leading the way in addressing this with our range of recombinant monoclonal antibodies and knockout edited cell lines for gold-standard validation. Please check that this product meets your needs before purchasing.</p> <p>If you have any questions, special requirements or concerns, please send us an inquiry and/or contact our Support team ahead of purchase. Recommended alternatives for this product can be found below, along with publications, customer reviews and Q&amp;As</p>

### Properties

---

<b>Form</b>	Liquid
<b>Storage instructions</b>	Shipped at 4°C. Store at -20°C. Stable for 12 months at -20°C.
<b>Storage buffer</b>	pH: 7.40 Preservative: 0.02% Sodium azide Constituents: 50% Glycerol (glycerin, glycerine), 0.87% Sodium chloride, PBS
	Without Mg <sup>2+</sup> and Ca <sup>2+</sup>
<b>Purity</b>	Immunogen affinity purified
<b>Purification notes</b>	ab70124 was affinity-purified from rabbit antiserum by affinity-chromatography using epitope-specific immunogen.
<b>Clonality</b>	Polyclonal
<b>Isotype</b>	IgG

### Applications

---

## The Abpromise guarantee

Our **Abpromise guarantee** covers the use of ab70124 in the following tested applications.

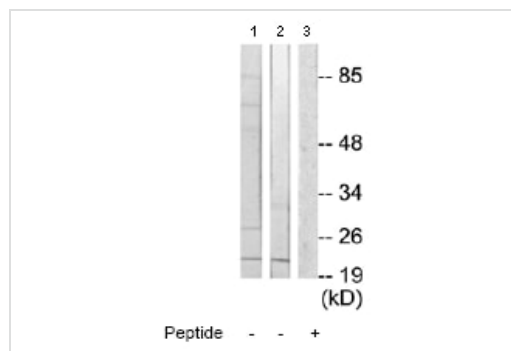
The application notes include recommended starting dilutions; optimal dilutions/concentrations should be determined by the end user.

Application	Abreviews	Notes
ICC/IF		Use a concentration of 1 µg/ml.
WB		1/500 - 1/1000. Detects a band of approximately 20 kDa (predicted molecular weight: 20 kDa).

## Target

<b>Function</b>	Activates the Jnk signaling pathway. Dephosphorylates and deactivates p38 and stress-activated protein kinase/c-Jun N-terminal kinase (SAPK/JNK).
<b>Tissue specificity</b>	Ubiquitous. Highest expression seen in heart, placenta, lung, liver, kidney and pancreas.
<b>Sequence similarities</b>	Belongs to the protein-tyrosine phosphatase family. Non-receptor class dual specificity subfamily. Contains 1 tyrosine-protein phosphatase domain.
<b>Cellular localization</b>	Cytoplasm. Nucleus.

## Images



Western blot - Anti-DUSP22 antibody (ab70124)

**All lanes :** Anti-DUSP22 antibody (ab70124) at 1/500 dilution

**Lane 1 :** Jurkat cell extracts

**Lane 2 :** RAW264.7 cell extracts

**Lane 3 :** RAW264.7 cell extracts with immunising peptide at 10 µg

Lysates/proteins at 30 µg per lane.

**Predicted band size:** 20 kDa

**Observed band size:** 20 kDa

Immunocytochemistry/ Immunofluorescence - Anti-DUSP22 antibody (ab70124)

ICC/IF image of ab70124 stained HepG2 cells. The cells were 100% methanol fixed (5 min) and then incubated in 1%BSA / 10% normal goat serum / 0.3M glycine in 0.1% PBS-Tween for 1h to permeabilise the cells and block non-specific protein-protein interactions. The cells were then incubated with the antibody (ab70124, 1µg/ml) overnight at +4°C. The secondary antibody (green) was Alexa Fluor® 488 goat anti-rabbit IgG (H+L) used at a 1/1000 dilution for 1h. Alexa Fluor® 594 WGA was used to label plasma membranes (red) at a 1/200 dilution for 1h. DAPI was used to stain the cell nuclei (blue) at a concentration of 1.43µM.

**Please note:** All products are "FOR RESEARCH USE ONLY. NOT FOR USE IN DIAGNOSTIC PROCEDURES"

### **Our Abpromise to you: Quality guaranteed and expert technical support**

---

- Replacement or refund for products not performing as stated on the datasheet
- Valid for 12 months from date of delivery
- Response to your inquiry within 24 hours
- We provide support in Chinese, English, French, German, Japanese and Spanish
- Extensive multi-media technical resources to help you
- We investigate all quality concerns to ensure our products perform to the highest standards

If the product does not perform as described on this datasheet, we will offer a refund or replacement. For full details of the Abpromise, please visit <https://www.abcam.com/abpromise> or contact our technical team.

### **Terms and conditions**

---

- Guarantee only valid for products bought direct from Abcam or one of our authorized distributors