


## Product datasheet

### Anti-DYRK3 antibody ab96617

1 Image

#### Overview

<b>Product name</b>	Anti-DYRK3 antibody
<b>Description</b>	Rabbit polyclonal to DYRK3
<b>Host species</b>	Rabbit
<b>Tested applications</b>	<b>Suitable for:</b> WB
<b>Species reactivity</b>	<b>Reacts with:</b> Human <b>Predicted to work with:</b> Mouse, Rat, Cow 
<b>Immunogen</b>	Recombinant protein fragment corresponding to a region within amino acids 243 and 542 of DYRK3.
<b>Positive control</b>	Raji cell lysate.
<b>General notes</b>	<p>The Life Science industry has been in the grips of a reproducibility crisis for a number of years. Abcam is leading the way in addressing this with our range of recombinant monoclonal antibodies and knockout edited cell lines for gold-standard validation. Please check that this product meets your needs before purchasing.</p> <p>If you have any questions, special requirements or concerns, please send us an inquiry and/or contact our Support team ahead of purchase. Recommended alternatives for this product can be found below, along with publications, customer reviews and Q&amp;As</p>

#### Properties

<b>Form</b>	Liquid
<b>Storage instructions</b>	Shipped at 4°C. Upon delivery aliquot and store at -20°C or -80°C. Avoid repeated freeze / thaw cycles.
<b>Storage buffer</b>	pH: 7.00 Preservative: 0.01% Thimerosal (merthiolate) Constituents: 1.21% Tris, 0.75% Glycine, 10% Glycerol (glycerin, glycerine)
<b>Purity</b>	Immunogen affinity purified
<b>Clonality</b>	Polyclonal
<b>Isotype</b>	IgG

#### Applications

## The Abpromise guarantee

Our **Abpromise guarantee** covers the use of ab96617 in the following tested applications.

The application notes include recommended starting dilutions; optimal dilutions/concentrations should be determined by the end user.

Application	Abreviews	Notes
WB		1/500 - 1/3000. Predicted molecular weight: 66 kDa.

## Target

### Function

Negative regulator of EPO-dependent erythropoiesis, may place an upper limit on red cell production during stress erythropoiesis. Inhibits cell death due to cytokine withdrawal in hematopoietic progenitor cells. May act by regulating CREB/CRE signaling.

### Tissue specificity

Isoform 1 and isoform 2 are highly expressed in testis and in hematopoietic tissue such as fetal liver, and bone marrow. Isoform 2 is the predominant form in testis. Isoform 1 is the predominant form in fetal liver and bone marrow. Isoform 1 and isoform 2 are present at low levels in heart, pancreas, lymph node, and thymus.

### Sequence similarities

Belongs to the protein kinase superfamily. CMGC Ser/Thr protein kinase family. MNB/DYRK subfamily.

Contains 1 protein kinase domain.

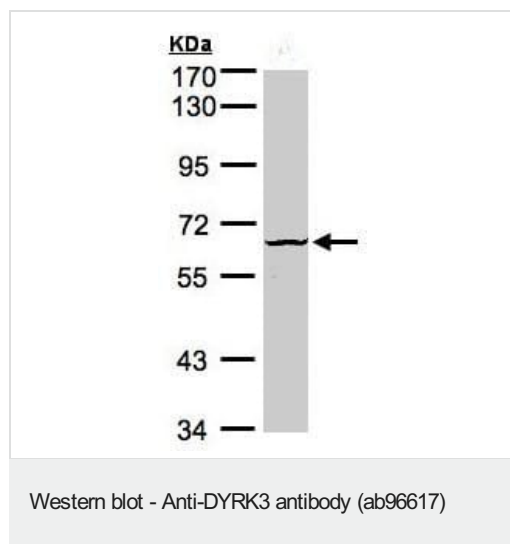
### Post-translational modifications

Autophosphorylated on tyrosine residues.

### Cellular localization

Nucleus.

## Images



Anti-DYRK3 antibody (ab96617) at 1/1000 dilution + Raji whole cell lysate at 30 µg

**Predicted band size:** 66 kDa

7.5% SDS Page

**Please note:** All products are "FOR RESEARCH USE ONLY. NOT FOR USE IN DIAGNOSTIC PROCEDURES"

**Our Abpromise to you: Quality guaranteed and expert technical support**

- Replacement or refund for products not performing as stated on the datasheet
- Valid for 12 months from date of delivery
- Response to your inquiry within 24 hours
- We provide support in Chinese, English, French, German, Japanese and Spanish
- Extensive multi-media technical resources to help you
- We investigate all quality concerns to ensure our products perform to the highest standards

If the product does not perform as described on this datasheet, we will offer a refund or replacement. For full details of the Abpromise, please visit <https://www.abcam.com/abpromise> or contact our technical team.

#### **Terms and conditions**

---

- Guarantee only valid for products bought direct from Abcam or one of our authorized distributors