


Anti-E2F1 antibody ab112580

★★★★★ [1 Abreviews](#) [14 References](#) [1 Image](#)

Overview

Product name	Anti-E2F1 antibody
Description	Rabbit polyclonal to E2F1
Host species	Rabbit
Tested applications	Suitable for: WB Unsuitable for: ICC/IF
Species reactivity	Reacts with: Mouse Predicted to work with: Rabbit, Horse, Cow, Dog, Pig, Chimpanzee, Macaque monkey, Gorilla, Chinese hamster, Orangutan 
Immunogen	Synthetic peptide. This information is proprietary to Abcam and/or its suppliers.
Positive control	WB: MEF1 whole cell lysate, NIH 3T3 whole cell lysate lysate
General notes	<p>The Life Science industry has been in the grips of a reproducibility crisis for a number of years. Abcam is leading the way in addressing this with our range of recombinant monoclonal antibodies and knockout edited cell lines for gold-standard validation. Please check that this product meets your needs before purchasing.</p> <p>If you have any questions, special requirements or concerns, please send us an inquiry and/or contact our Support team ahead of purchase. Recommended alternatives for this product can be found below, along with publications, customer reviews and Q&As</p>

Properties

Form	Liquid
Storage instructions	Shipped at 4°C. Store at +4°C short term (1-2 weeks). Upon delivery aliquot. Store at -20°C or -80°C. Avoid freeze / thaw cycle.
Storage buffer	pH: 7.40 Preservative: 0.02% Sodium azide Constituent: PBS
Purity	Batches of this product that have a concentration < 1mg/ml may have BSA added as a stabilising agent. If you would like information about the formulation of a specific lot, please contact our scientific support team who will be happy to help. Immunogen affinity purified

Clonality	Polyclonal
Isotype	IgG

Applications

The Abpromise guarantee Our **Abpromise guarantee** covers the use of ab112580 in the following tested applications. The application notes include recommended starting dilutions; optimal dilutions/concentrations should be determined by the end user.

Application	Abreviews	Notes
WB		Use a concentration of 1 µg/ml. Detects a band of approximately 55 kDa (predicted molecular weight: 47 kDa).

Application notes Is unsuitable for ICC/IF.

Target

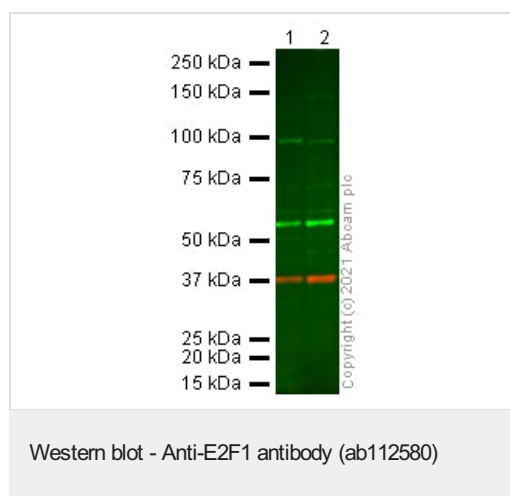
Function Transcription activator that binds DNA cooperatively with dp proteins through the E2 recognition site, 5'-TTTC[CG]CGC-3' found in the promoter region of a number of genes whose products are involved in cell cycle regulation or in DNA replication. The DRTF1/E2F complex functions in the control of cell-cycle progression from G1 to S phase. E2F-1 binds preferentially RB1 protein, in a cell-cycle dependent manner. It can mediate both cell proliferation and p53-dependent apoptosis.

Sequence similarities Belongs to the E2F/DP family.

Post-translational modifications Phosphorylated by CDK2 and cyclin A-CDK2 in the S-phase. Acetylation stimulates DNA-binding. Enhanced under stress conditions such as DNA damage and inhibited by retinoblastoma protein pRB. Regulated by KAP1/TRIM28 which recruits HDAC1 to E2F1 resulting in deacetylation. Acetylated by P/CAF/KAT2B.

Cellular localization Nucleus.

Images



All lanes : Anti-E2F1 antibody (ab112580) at 1 µg/ml

Lane 1 : MEF1 whole cell lysate

Lane 2 : NIH 3T3 whole cell lysate lysate

Lysates/proteins at 20 µg per lane.

Secondary

All lanes : Goat anti-Rabbit IgG H&L (IRDye® 800CW) preadsorbed at 1/10000 dilution

Predicted band size: 47 kDa

Observed band size: 55 kDa

Gel type: MOPS

Blocking buffer: 2% BSA block

Loading Control: GAPDH (**ab8245** @ 0.1 ug/ml). Secondary: Goat anti-Mouse IgG H&L (IRDye® 680RD)

Please note: All products are "FOR RESEARCH USE ONLY. NOT FOR USE IN DIAGNOSTIC PROCEDURES"

Our Abpromise to you: Quality guaranteed and expert technical support

- Replacement or refund for products not performing as stated on the datasheet
- Valid for 12 months from date of delivery
- Response to your inquiry within 24 hours
- We provide support in Chinese, English, French, German, Japanese and Spanish
- Extensive multi-media technical resources to help you
- We investigate all quality concerns to ensure our products perform to the highest standards

If the product does not perform as described on this datasheet, we will offer a refund or replacement. For full details of the Abpromise, please visit <https://www.abcam.com/abpromise> or contact our technical team.

Terms and conditions

- Guarantee only valid for products bought direct from Abcam or one of our authorized distributors