


## Product datasheet

### Anti-E2F3 antibody ab152126

KO VALIDATED

[10 References](#) [2 Images](#)

#### Overview

Product name	Anti-E2F3 antibody
Description	Rabbit polyclonal to E2F3
Host species	Rabbit
Tested applications	<b>Suitable for:</b> WB
Species reactivity	<b>Reacts with:</b> Human <b>Predicted to work with:</b> Mouse, Cow 
Immunogen	Recombinant fragment, corresponding to a region within amino acids 153-409 of Human E2F3 (Uniprot ID: O00716).
Positive control	293T whole cell lysate.
General notes	<p>The Life Science industry has been in the grips of a reproducibility crisis for a number of years. Abcam is leading the way in addressing this with our range of recombinant monoclonal antibodies and knockout edited cell lines for gold-standard validation. Please check that this product meets your needs before purchasing.</p> <p>If you have any questions, special requirements or concerns, please send us an inquiry and/or contact our Support team ahead of purchase. Recommended alternatives for this product can be found below, along with publications, customer reviews and Q&amp;As</p>

#### Properties

Form	Liquid
Storage instructions	Shipped at 4°C. Upon delivery aliquot. Store at -20°C or -80°C. Avoid freeze / thaw cycle.
Storage buffer	pH: 7.00 Preservative: 0.01% Thimerosal (merthiolate) Constituents: 89.99% PBS, 10% Glycerol (glycerin, glycerine)
Purity	Immunogen affinity purified
Clonality	Polyclonal
Isotype	IgG

## Applications

### The Abpromise guarantee

Our **Abpromise guarantee** covers the use of ab152126 in the following tested applications.

The application notes include recommended starting dilutions; optimal dilutions/concentrations should be determined by the end user.

Application	Abreviews	Notes
WB		1/500 - 1/3000. Predicted molecular weight: 49 kDa.

## Target

### Function

Transcription activator that binds DNA cooperatively with DP proteins through the E2 recognition site, 5'-TTTC[CG]CGC-3' found in the promoter region of a number of genes whose products are involved in cell cycle regulation or in DNA replication. The DRTF1/E2F complex functions in the control of cell-cycle progression from G1 to S phase. E2F-3 binds specifically to RB1 protein, in a cell-cycle dependent manner.

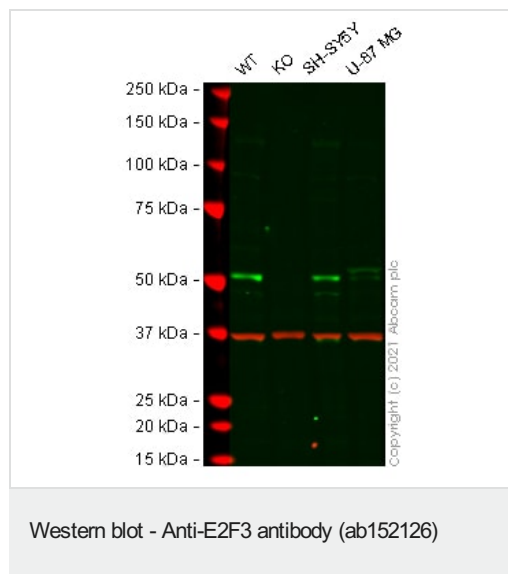
### Sequence similarities

Belongs to the E2F/DP family.

### Cellular localization

Nucleus.

## Images



**All lanes :** Anti-E2F3 antibody (ab152126) at 1/500 dilution

**Lane 1 :** Wild-type HeLa cell lysate

**Lane 2 :** E2F3 knockout HeLa cell lysate

**Lane 3 :** SH-SY5Y cell lysate

**Lane 4 :** U-87 MG cell lysate

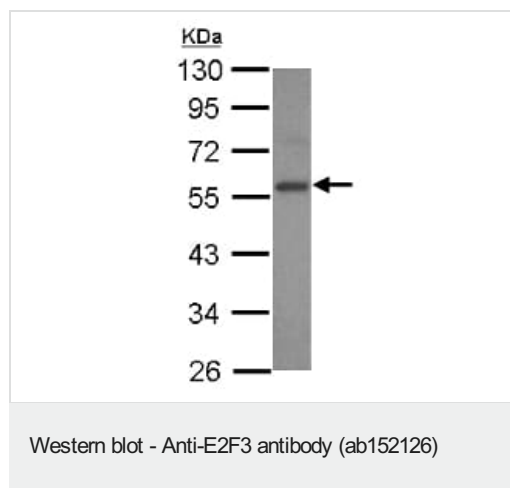
Performed under reducing conditions.

**Predicted band size:** 49 kDa

**Observed band size:** 49 kDa

False colour image of Western blot: Anti-E2F3 antibody staining at 1/500 dilution, shown in green; Mouse anti-GAPDH antibody [6C5] ([ab8245](#)) loading control staining at 1/20000 dilution, shown in red. In Western blot, ab152126 was shown to bind specifically to E2F3. A band was observed at 49 kDa in wild-type HeLa cell lysates with no signal observed at this size in E2F3 knockout cell line [ab265362](#) (knockout cell lysate [ab257415](#)). To generate this image, wild-type and E2F3 knockout HeLa cell lysates were analysed. First, samples were run on an SDS-PAGE gel then transferred onto a

nitrocellulose membrane. Membranes were blocked in 3 % milk in TBS-0.1 % Tween<sup>®</sup> 20 (TBS-T) before incubation with primary antibodies overnight at 4 °C. Blots were washed four times in TBS-T, incubated with secondary antibodies for 1 h at room temperature, washed again four times then imaged. Secondary antibodies used were Goat anti-Rabbit IgG H&L (IRDye<sup>®</sup> 800CW) preabsorbed (**ab216773**) and Goat anti-Mouse IgG H&L (IRDye<sup>®</sup> 680RD) preabsorbed (**ab216776**) at 1/20000 dilution.



Anti-E2F3 antibody (ab152126) at 1/1000 dilution + 293T whole cell lysate at 30 µg

**Predicted band size:** 49 kDa

10% SDS PAGE

**Please note:** All products are "FOR RESEARCH USE ONLY. NOT FOR USE IN DIAGNOSTIC PROCEDURES"

### Our Abpromise to you: Quality guaranteed and expert technical support

- Replacement or refund for products not performing as stated on the datasheet
- Valid for 12 months from date of delivery
- Response to your inquiry within 24 hours
- We provide support in Chinese, English, French, German, Japanese and Spanish
- Extensive multi-media technical resources to help you
- We investigate all quality concerns to ensure our products perform to the highest standards

If the product does not perform as described on this datasheet, we will offer a refund or replacement. For full details of the Abpromise, please visit <https://www.abcam.com/abpromise> or contact our technical team.

### Terms and conditions

- Guarantee only valid for products bought direct from Abcam or one of our authorized distributors