

Product datasheet

Anti-E3 ubiquitin-protein ligase MUL1 antibody [EPR20241] α b209263

Recombinant RabMAb

★★★★★ [2 Abreviews](#) [6 References](#) [4 Images](#)

Overview

Product name	Anti-E3 ubiquitin-protein ligase MUL1 antibody [EPR20241]
Description	Rabbit monoclonal [EPR20241] to E3 ubiquitin-protein ligase MUL1
Host species	Rabbit
Tested applications	Suitable for: IP, WB Unsuitable for: ICC
Species reactivity	Reacts with: Human
Immunogen	Recombinant fragment. This information is proprietary to Abcam and/or its suppliers.
Positive control	WB: HEK-293, HeLa, PC-3 and A431 whole cell lysates; Human fetal heart lysate. IP: HeLa whole cell lysate.
General notes	<p>This product is a recombinant monoclonal antibody, which offers several advantages including:</p> <ul style="list-style-type: none"> - High batch-to-batch consistency and reproducibility - Improved sensitivity and specificity - Long-term security of supply - Animal-free production <p>For more information see here.</p> <p>Our RabMAb[®] technology is a patented hybridoma-based technology for making rabbit monoclonal antibodies. For details on our patents, please refer to RabMAb[®] patents.</p>

Properties

Form	Liquid
Storage instructions	Shipped at 4°C. Store at +4°C short term (1-2 weeks). Upon delivery aliquot. Store at -20°C long term. Avoid freeze / thaw cycle.
Storage buffer	pH: 7.2 Preservative: 0.01% Sodium azide Constituents: 59% PBS, 40% Glycerol (glycerin, glycerine), 0.05% BSA
Purity	Protein A purified
Clonality	Monoclonal

Clone number

EPR20241

Isotype

IgG

Applications

The **Abpromise guarantee**

Our **Abpromise guarantee** covers the use of ab209263 in the following tested applications.

The application notes include recommended starting dilutions; optimal dilutions/concentrations should be determined by the end user.

Application	Abreviews	Notes
IP		1/30.
WB	★★★★★ (2)	1/1000. Detects a band of approximately 39 kDa (predicted molecular weight: 39 kDa).

Application notes

Is unsuitable for ICC.

Target

Function

Exhibits weak E3 ubiquitin-protein ligase activity, but preferentially acts as a SUMO E3 ligase at physiological concentrations. Plays a role in the control of mitochondrial morphology. Promotes mitochondrial fragmentation and influences mitochondrial localization. Inhibits cell growth. When overexpressed, activates JNK through MAP3K7/TAK1 and induces caspase-dependent apoptosis. E3 ubiquitin ligases accept ubiquitin from an E2 ubiquitin-conjugating enzyme in the form of a thioester and then directly transfer the ubiquitin to targeted substrates.

Tissue specificity

Widely expressed with highest levels in the heart, skeletal muscle, placenta, kidney and liver. Barely detectable in colon and thymus.

Pathway

Protein modification; protein ubiquitination.
Protein modification; protein sumoylation.

Sequence similarities

Contains 1 RING-type zinc finger.

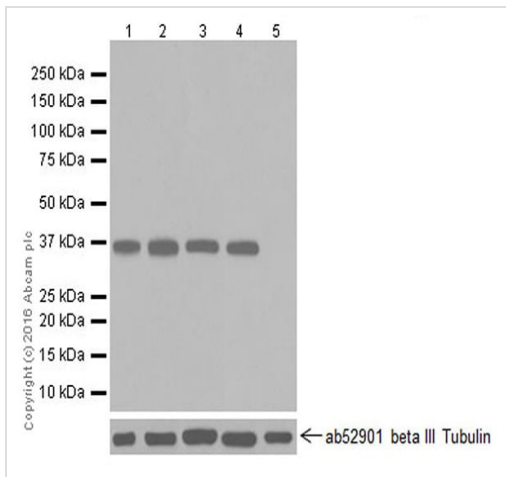
Domain

The zinc finger domain is required for E3 ligase activity.

Cellular localization

Mitochondrion outer membrane. Peroxisome. Transported in mitochondrion-derived vesicles from the mitochondrion to the peroxisome.

Images



Western blot - Anti-E3 ubiquitin-protein ligase MUL1 antibody [EPR20241] (ab209263)

All lanes : Anti-E3 ubiquitin-protein ligase MUL1 antibody [EPR20241] (ab209263) at 1/1000 dilution

Lane 1 : HEK-293 (Human epithelial cell line from embryonic kidney) whole cell lysate

Lane 2 : HeLa (Human epithelial cell line from cervix adenocarcinoma) whole cell lysate

Lane 3 : PC-3 (Human prostate adenocarcinoma cell line) whole cell lysate

Lane 4 : Human fetal heart tissue lysate

Lane 5 : Human thymus tissue lysate

Lysates/proteins at 20 µg per lane.

Secondary

All lanes : Goat Anti-Rabbit IgG H&L (HRP) ([ab97051](#)) at 1/100000 dilution

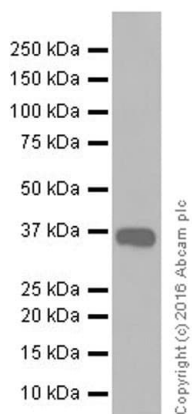
Predicted band size: 39 kDa

Observed band size: 39 kDa

Exposure time: 15 minutes

Blocking/Dilution buffer: 5% NFDM/TBST.

Negative control: Human thymus (PMID: 18591963).



Western blot - Anti-E3 ubiquitin-protein ligase MUL1 antibody [EPR20241] (ab209263)

Anti-E3 ubiquitin-protein ligase MUL1 antibody [EPR20241] (ab209263) at 1/1000 dilution + A431 (Human epidermoid carcinoma cell line) whole cell lysate at 20 µg

Secondary

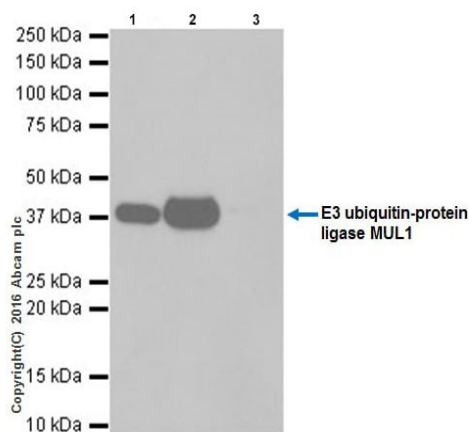
Goat Anti-Rabbit IgG H&L (HRP) ([ab97051](#)) at 1/100000 dilution

Predicted band size: 39 kDa

Observed band size: 39 kDa

Exposure time: 15 seconds

Blocking/Dilution buffer: 5% NFDM/TBST.



Immunoprecipitation - Anti-E3 ubiquitin-protein ligase MUL1 antibody [EPR20241] (ab209263)

E3 ubiquitin-protein ligase MUL1 was immunoprecipitated from 0.35 mg of HeLa (Human epithelial cell line from cervix adenocarcinoma) whole cell lysate with ab209263 at 1/30 dilution.

Western blot was performed from the immunoprecipitate using ab209263 at 1/1000 dilution.

VeriBlot for IP Detection Reagent (HRP) ([ab131366](#)), was used for detection at 1/10000 dilution.

Lane 1: HeLa whole cell lysate, 10 µg (Input).

Lane 2: ab209263 IP in HeLa whole cell lysate.

Lane 3: Rabbit monoclonal IgG ([ab172730](#)) instead of ab209263 in HeLa whole cell lysate.

Blocking and dilution buffer and concentration: 5% NFDM/TBST.

Exposure time: 3 minutes.

Why choose a recombinant antibody?



Research with confidence
Consistent and reproducible results



Long-term and scalable supply
Recombinant technology



Success from the first experiment
Confirmed specificity



Ethical standards compliant
Animal-free production

Anti-E3 ubiquitin-protein ligase MUL1 antibody
[EPR20241] (ab209263)

Please note: All products are "FOR RESEARCH USE ONLY. NOT FOR USE IN DIAGNOSTIC PROCEDURES"

Our Abpromise to you: Quality guaranteed and expert technical support

- Replacement or refund for products not performing as stated on the datasheet
- Valid for 12 months from date of delivery
- Response to your inquiry within 24 hours
- We provide support in Chinese, English, French, German, Japanese and Spanish
- Extensive multi-media technical resources to help you
- We investigate all quality concerns to ensure our products perform to the highest standards

If the product does not perform as described on this datasheet, we will offer a refund or replacement. For full details of the Abpromise, please visit <https://www.abcam.com/abpromise> or contact our technical team.

Terms and conditions

- Guarantee only valid for products bought direct from Abcam or one of our authorized distributors