


Product datasheet

Anti-E4F1 antibody ab70618

2 Images

Overview

Product name	Anti-E4F1 antibody
Description	Rabbit polyclonal to E4F1
Host species	Rabbit
Tested applications	Suitable for: WB, IP
Species reactivity	Reacts with: Human Predicted to work with: Mouse, Rat, Rabbit, Horse, Cow, Dog, Pig, Chimpanzee, Gorilla, Orangutan, Bat 
Immunogen	Synthetic peptide corresponding to Human E4F1 aa 700-800 (C terminal). Synthetic peptide corresponding to a region between residue 725 and the C terminus (residue 784) of human E4F1 Database link: Q66K89
Positive control	HeLa, 293T and MCF7 whole cell lysates.
General notes	<p>The Life Science industry has been in the grips of a reproducibility crisis for a number of years. Abcam is leading the way in addressing this with our range of recombinant monoclonal antibodies and knockout edited cell lines for gold-standard validation. Please check that this product meets your needs before purchasing.</p> <p>If you have any questions, special requirements or concerns, please send us an inquiry and/or contact our Support team ahead of purchase. Recommended alternatives for this product can be found below, along with publications, customer reviews and Q&As</p>

Properties

Form	Liquid
Storage instructions	Shipped at 4°C. Upon delivery aliquot and store at -20°C. Avoid freeze / thaw cycles.
Storage buffer	pH: 7 Preservative: 0.09% Sodium azide Constituents: 1.815% Tris, 1.764% Sodium citrate, 0.021% PBS
Purity	Immunogen affinity purified
Purification notes	ab70618 was affinity purified using an epitope specific to E4F1 immobilized on solid support.
Clonality	Polyclonal
Isotype	IgG

Applications

The Abpromise guarantee

Our **Abpromise guarantee** covers the use of ab70618 in the following tested applications.

The application notes include recommended starting dilutions; optimal dilutions/concentrations should be determined by the end user.

Application	Abreviews	Notes
WB		
IP		

Application notes

IP: Use at 2-5µg/mg of lysate.

WB: 1/2000 - 1/10000. Detects a band of approximately 120 kDa (predicted molecular weight: 84 kDa).

Not yet tested in other applications.

Optimal dilutions/concentrations should be determined by the end user.

Target

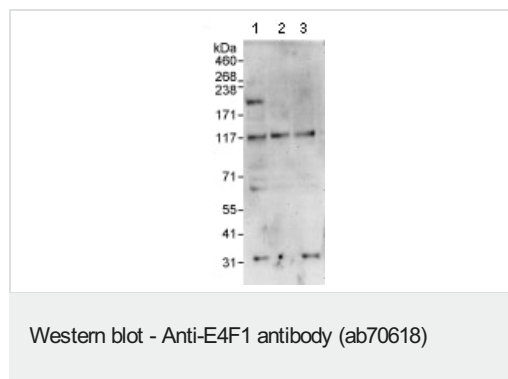
Relevance

E4F1 is a zinc finger transcription factor that inhibits cell proliferation. E4F1 interacts with Bmi1 in hematopoietic cells and is important for the regulation of stem cell proliferation.

Cellular localization

Nuclear

Images



All lanes : Anti-E4F1 antibody (ab70618) at 0.1 µg/ml

Lane 1 : HeLa whole cell lysate

Lane 2 : 293T whole cell lysate

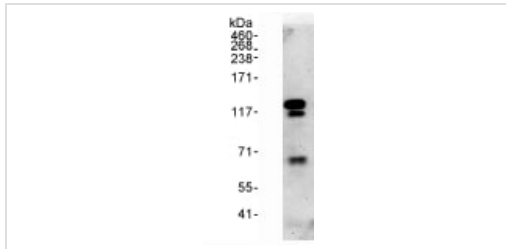
Lane 3 : MCF7 whole cell lysate

Lysates/proteins at 50 µg per lane.

Predicted band size: 84 kDa

Observed band size: 120 kDa

Exposure time: 3 minutes



Immunoprecipitation - Anti-E4F1 antibody (ab70618)

Detection of Human E4F1 by Western Blot of Immunoprecipitate.

Lane 1: ab70618 at 1 μ g/ml staining E4F1 in MCF7 whole cell lysates immunoprecipitated using ab70618 at 3 μ g/mg lysate (1 mg/IP; 20% of IP loaded/lane).

Detection: Chemiluminescence with an exposure time of 3 minutes.

Please note: All products are "FOR RESEARCH USE ONLY. NOT FOR USE IN DIAGNOSTIC PROCEDURES"

Our Abpromise to you: Quality guaranteed and expert technical support

- Replacement or refund for products not performing as stated on the datasheet
- Valid for 12 months from date of delivery
- Response to your inquiry within 24 hours
- We provide support in Chinese, English, French, German, Japanese and Spanish
- Extensive multi-media technical resources to help you
- We investigate all quality concerns to ensure our products perform to the highest standards

If the product does not perform as described on this datasheet, we will offer a refund or replacement. For full details of the Abpromise, please visit <https://www.abcam.com/abpromise> or contact our technical team.

Terms and conditions

- Guarantee only valid for products bought direct from Abcam or one of our authorized distributors