


Product datasheet

Anti-EB3 antibody [EPR11421(B)] ab157217

Recombinant RabMAb

[8 References](#) [6 Images](#)

Overview

Product name	Anti-EB3 antibody [EPR11421(B)]
Description	Rabbit monoclonal [EPR11421(B)] to EB3
Host species	Rabbit
Tested applications	Suitable for: WB, IHC-P, ICC/IF, Flow Cyt (Intra) Unsuitable for: IP
Species reactivity	Reacts with: Rat, Human Predicted to work with: Mouse 
Immunogen	Synthetic peptide within Human EB3. The exact sequence is proprietary.
Positive control	WB: Human cerebellum, human fetal brain and rat muscle lysates. IHC-P: Human brain tissue, Human skeletal muscle tissue. Flow Cyt (intra): U87 MG cells. ICC/IF: SH-SY5Y cells.
General notes	<p>This product is a recombinant monoclonal antibody, which offers several advantages including:</p> <ul style="list-style-type: none"> - High batch-to-batch consistency and reproducibility - Improved sensitivity and specificity - Long-term security of supply - Animal-free production <p>For more information see here.</p> <p>Our RabMAb[®] technology is a patented hybridoma-based technology for making rabbit monoclonal antibodies. For details on our patents, please refer to RabMAb[®] patents.</p>

Properties

Form	Liquid
Storage instructions	Shipped at 4°C. Store at -20°C.
Storage buffer	pH: 7.2 Preservative: 0.01% Sodium azide Constituents: 9% PBS, 40% Glycerol (glycerin, glycerine), 0.05% BSA, 50% Tissue culture supernatant
Purity	Tissue culture supernatant
Clonality	Monoclonal

Clone number EPR11421(B)
Isotype IgG

Applications

The Abpromise guarantee Our **Abpromise guarantee** covers the use of ab157217 in the following tested applications.
The application notes include recommended starting dilutions; optimal dilutions/concentrations should be determined by the end user.

Application	Abreviews	Notes
WB		1/10000 - 1/50000. Predicted molecular weight: 32 kDa.
IHC-P		1/250 - 1/500. Perform heat mediated antigen retrieval with citrate buffer pH 6 before commencing with IHC staining protocol.
ICC/IF		1/250 - 1/500.
Flow Cyt (Intra)		Use at an assay dependent concentration.

Application notes Is unsuitable for IP.

Target

Function May be involved in microtubule polymerization, and spindle function by stabilizing microtubules and anchoring them at centrosomes. May play a role in cell migration.

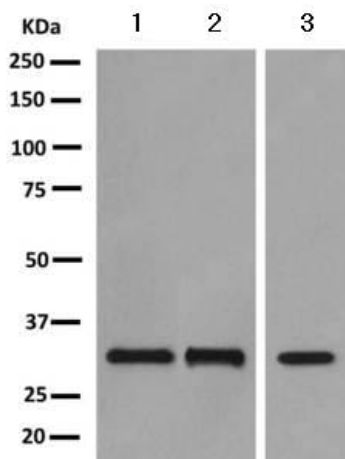
Tissue specificity Predominantly expressed in brain and muscle.

Sequence similarities Belongs to the MAPRE family.
Contains 1 CH (calponin-homology) domain.
Contains 1 EB1 C-terminal domain.

Domain Composed of two functionally independent domains. The N-terminal domain forms an hydrophobic cleft involved in microtubule binding and the C-terminal is involved in the formation of mutually exclusive complexes with APC and DCTN1.

Cellular localization Cytoplasm > cytoskeleton. Associated with the microtubule network.

Images



Western blot - Anti-EB3 antibody [EPR11421(B)] (ab157217)

All lanes : Anti-EB3 antibody [EPR11421(B)] (ab157217) at 1/10000 dilution

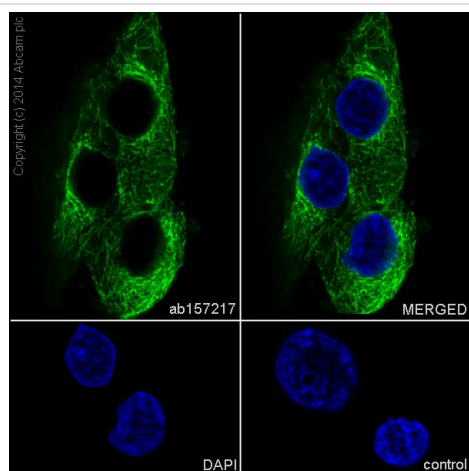
Lane 1 : Human cerebellum lysate

Lane 2 : Human fetal brain lysate

Lane 3 : Rat muscle lysate

Lysates/proteins at 10 µg per lane.

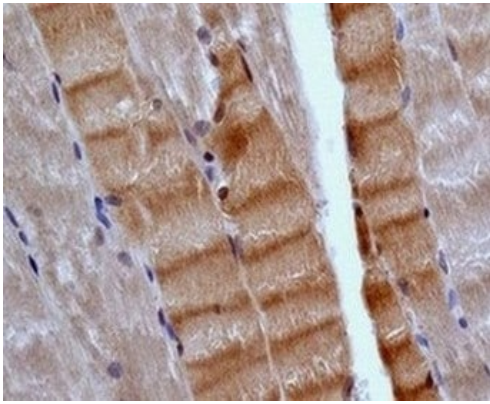
Predicted band size: 32 kDa



Immunocytochemistry/ Immunofluorescence - Anti-EB3 antibody [EPR11421(B)] (ab157217)

Immunocytochemistry/Immunofluorescence analysis of SH-SY5Y (Human neuroblastoma cell line from bone marrow) cells labeling EB3 with purified ab157217 at a dilution of 1/500. Cells were fixed with 4% paraformaldehyde and permeabilized with 0.1% Triton X-100. **ab150077**, an Alexa Fluor® 488-conjugated goat anti-rabbit IgG (1/1000) was used as the secondary antibody. Nuclei counterstained with DAPI (blue).

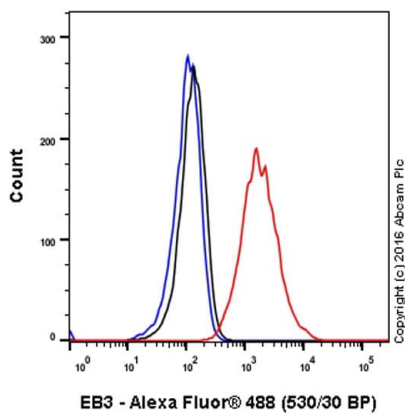
Control: PBS only.



Immunohistochemistry (Formalin/PFA-fixed paraffin-embedded sections) - Anti-EB3 antibody [EPR11421(B)] (ab157217)

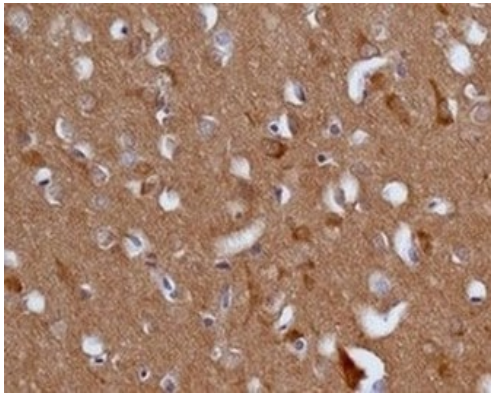
Immunohistochemical analysis of paraffin embedded human skeletal muscle tissue labeling EB3 with ab157217 at 1/250.

Perform heat mediated antigen retrieval with citrate buffer pH 6 before commencing with IHC staining protocol.



Flow Cytometry (Intracellular) - Anti-EB3 antibody [EPR11421(B)] (ab157217)

Intracellular Flow Cytometry analysis of U87-MG (human glioblastoma) cells labeling EB3 with unpurified ab157217 at 1/20 dilution (10µg/ml) (red). Cells were fixed with 4% paraformaldehyde and permeabilized with 90% methanol. A Goat anti rabbit IgG (Alexa Fluor® 488) (1/2000 dilution) was used as the secondary antibody. Rabbit monoclonal IgG (Black) was used as the isotype control, cells without incubation with primary antibody and secondary antibody (Blue) were used as the unlabeled control.



Immunohistochemistry (Formalin/PFA-fixed paraffin-embedded sections) - Anti-EB3 antibody [EPR11421(B)] (ab157217)

Immunohistochemical analysis of paraffin embedded human brain tissue labeling EB3 with ab157217 at 1/250.

Perform heat mediated antigen retrieval with citrate buffer pH 6 before commencing with IHC staining protocol.

Why choose a recombinant antibody?



Research with confidence
Consistent and reproducible results



Long-term and scalable supply
Recombinant technology



Success from the first experiment
Confirmed specificity



Ethical standards compliant
Animal-free production

Anti-EB3 antibody [EPR11421(B)] (ab157217)

Please note: All products are "FOR RESEARCH USE ONLY. NOT FOR USE IN DIAGNOSTIC PROCEDURES"

Our Abpromise to you: Quality guaranteed and expert technical support

- Replacement or refund for products not performing as stated on the datasheet
- Valid for 12 months from date of delivery
- Response to your inquiry within 24 hours
- We provide support in Chinese, English, French, German, Japanese and Spanish
- Extensive multi-media technical resources to help you
- We investigate all quality concerns to ensure our products perform to the highest standards

If the product does not perform as described on this datasheet, we will offer a refund or replacement. For full details of the Abpromise, please visit <https://www.abcam.com/abpromise> or contact our technical team.

Terms and conditions

- Guarantee only valid for products bought direct from Abcam or one of our authorized distributors