

Product datasheet

Anti-EBV Latent Membrane Protein 1 antibody [CS1, CS2, CS3, CS4], prediluted ab7502

[2 References](#) [1 Image](#)

Overview

Product name	Anti-EBV Latent Membrane Protein 1 antibody [CS1, CS2, CS3, CS4], prediluted
Description	Mouse monoclonal [CS1, CS2, CS3, CS4] to EBV Latent Membrane Protein 1, prediluted
Host species	Mouse
Specificity	This antibody is specific to 60 kD latent membrane protein (LMP1) encoded by the BNLF1 gene of the EBV. Each clone reacts with different epitopes on the hydrophilic c-terminus of the cytoplasmic domain of LMP1. This antibody stains strongly with EBV positive lymphoblastoid cell lines and EBV infected B cell immunoblasts in infectious mononucleosis.
Tested applications	Suitable for: IHC-P, IHC-Fr
Species reactivity	Reacts with: Epstein-Barr virus
Immunogen	Recombinant fusion protein containing sequences of bacterial beta-galactosidase and EBV encoded Latent membrane protein.
Positive control	Infected lymphoblastoma.
General notes	<p>The Life Science industry has been in the grips of a reproducibility crisis for a number of years. Abcam is leading the way in addressing this with our range of recombinant monoclonal antibodies and knockout edited cell lines for gold-standard validation. Please check that this product meets your needs before purchasing.</p> <p>If you have any questions, special requirements or concerns, please send us an inquiry and/or contact our Support team ahead of purchase. Recommended alternatives for this product can be found below, along with publications, customer reviews and Q&As</p>

Properties

Form	Liquid
Storage instructions	Shipped at 4°C. Store at +4°C.
Storage buffer	pH: 7.3 Constituent: PBS
Purity	Tissue culture supernatant
Purification notes	This product is supplied as a tissue culture supernatant and contains sodium azide as a preservative.

Clonality	Monoclonal
Clone number	CS1, CS2, CS3, CS4
Isotype	IgG1

Applications

The Abpromise guarantee Our **Abpromise guarantee** covers the use of ab7502 in the following tested applications. The application notes include recommended starting dilutions; optimal dilutions/concentrations should be determined by the end user.

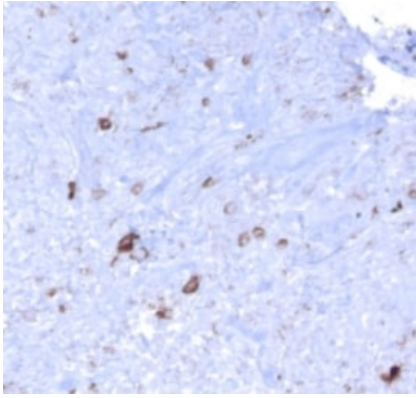
Application	Abreviews	Notes
IHC-P		Use at an assay dependent concentration. Perform heat mediated antigen retrieval before commencing with IHC staining protocol.
IHC-Fr		Use at an assay dependent concentration.

Target

Relevance

EBV is a human herpesvirus that establishes a life-long persistence in the host. The virus infects the vast majority of the world's adult population and is well known for its association with a broad spectrum of benign and malignant diseases, including infectious mononucleosis, Burkitt's lymphoma, nasopharyngeal carcinoma, and is causally associated with lymphoid and epithelial malignancies, including post-transplant lymphoproliferative disorders, Hodgkin's disease, anaplastic nasopharyngeal carcinoma and gastric carcinomas. Latent membrane protein 1 (LMP1) of Epstein-Barr virus (EBV) is a transforming protein that affects multiple cell signalling pathways and contributes to EBV-associated oncogenesis. LMP1 can be expressed in some states of EBV latency, and significant induction of full-length LMP1 is also observed frequently during virus reactivation into the lytic cycle. LMP1 is critical for EBV-infected cell activation, adhesion and survival, and is usually expressed in the malignant cells.

Images



The image shows lung tissue diagnosed with Post-Transplantation Lymphoproliferative Disorder (PTLD). Mononuclear cells are stained brown with DAB chromogen around the cytoplasm - typical for Latent Membrane Protein-1 of EBV.

This picture was kindly supplied as part of the review submitted by Pradeep Rai.

Immunohistochemistry (Formalin/PFA-fixed paraffin-embedded sections) - Anti-EBV Latent Membrane Protein 1 antibody [CS1, CS2, CS3, CS4], prediluted (ab7502)

Please note: All products are "FOR RESEARCH USE ONLY. NOT FOR USE IN DIAGNOSTIC PROCEDURES"

Our Abpromise to you: Quality guaranteed and expert technical support

- Replacement or refund for products not performing as stated on the datasheet
- Valid for 12 months from date of delivery
- Response to your inquiry within 24 hours
- We provide support in Chinese, English, French, German, Japanese and Spanish
- Extensive multi-media technical resources to help you
- We investigate all quality concerns to ensure our products perform to the highest standards

If the product does not perform as described on this datasheet, we will offer a refund or replacement. For full details of the Abpromise, please visit <https://www.abcam.com/abpromise> or contact our technical team.

Terms and conditions

- Guarantee only valid for products bought direct from Abcam or one of our authorized distributors