


Product datasheet

Anti-EDD antibody - C-terminal ab226792

[2 Images](#)

Overview

Product name	Anti-EDD antibody - C-terminal
Description	Rabbit polyclonal to EDD - C-terminal
Host species	Rabbit
Tested applications	Suitable for: WB, ICC/IF
Species reactivity	Reacts with: Human Predicted to work with: Mouse, Cow 
Immunogen	Recombinant fragment within Human EDD (C terminal). The exact sequence is proprietary. Database link: O95071
Positive control	WB: U-87 MG whole cell lysate and nuclear extract. ICC/IF: U-87 MG cells.
General notes	<p>The Life Science industry has been in the grips of a reproducibility crisis for a number of years. Abcam is leading the way in addressing this with our range of recombinant monoclonal antibodies and knockout edited cell lines for gold-standard validation. Please check that this product meets your needs before purchasing.</p> <p>If you have any questions, special requirements or concerns, please send us an inquiry and/or contact our Support team ahead of purchase. Recommended alternatives for this product can be found below, along with publications, customer reviews and Q&As</p>

Properties

Form	Liquid
Storage instructions	Shipped at 4°C. Store at +4°C short term (1-2 weeks). Upon delivery aliquot. Store at -20°C long term. Avoid freeze / thaw cycle.
Storage buffer	pH: 7.00 Preservative: 0.025% Proclin 300 Constituents: 79% PBS, 20% Glycerol (glycerin, glycerine)
Purity	Immunogen affinity purified
Clonality	Polyclonal
Isotype	IgG

Applications

The Abpromise guarantee

Our **Abpromise guarantee** covers the use of ab226792 in the following tested applications.

The application notes include recommended starting dilutions; optimal dilutions/concentrations should be determined by the end user.

Application	Abreviews	Notes
WB		1/500 - 1/3000. Predicted molecular weight: 309 kDa.
ICC/IF		1/100 - 1/1000.

Target

Function

E3 ubiquitin-protein ligase which is a component of the N-end rule pathway. Recognizes and binds to proteins bearing specific amino-terminal residues that are destabilizing according to the N-end rule, leading to their ubiquitination and subsequent degradation (By similarity). May be involved in maturation and/or transcriptional regulation of mRNA. May play a role in control of cell cycle progression. May have tumor suppressor function. Regulates DNA topoisomerase II binding protein (TopBP1) in the DNA damage response. Plays an essential role in extraembryonic development.

Tissue specificity

Widely expressed. Most abundant in testis and expressed at high levels in brain, pituitary and kidney.

Pathway

Protein modification; protein ubiquitination.

Sequence similarities

Contains 1 HECT (E6AP-type E3 ubiquitin-protein ligase) domain.
Contains 1 PABC domain.
Contains 1 UBR-type zinc finger.

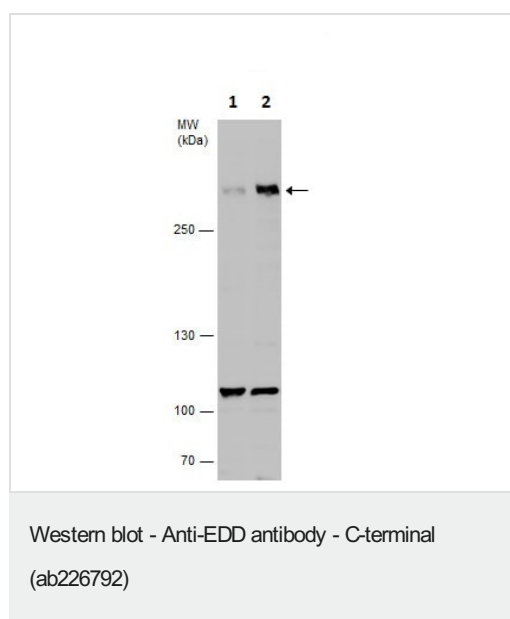
Post-translational modifications

Phosphorylated upon DNA damage, probably by ATM or ATR.

Cellular localization

Nucleus.

Images



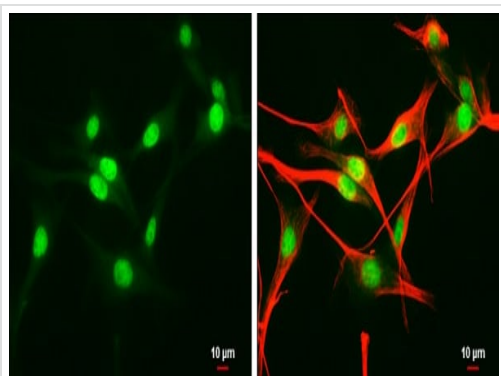
All lanes : Anti-EDD antibody - C-terminal (ab226792) at 1/500 dilution

Lane 1 : U-87 MG (human glioblastoma-astrocytoma epithelial cell line) whole cell lysate

Lane 2 : U-87 MG (human glioblastoma-astrocytoma epithelial cell line) nuclear extract

Lysates/proteins at 30 µg per lane.

Predicted band size: 309 kDa



Immunocytochemistry/ Immunofluorescence - Anti-EDD antibody - C-terminal (ab226792)

4% paraformaldehyde-fixed, U-87 MG (human glioblastoma-astrocytoma epithelial cell line) cells stained for EDD (green) using ab226792 at 1/500 dilution in ICC/IF.

Alpha-Tubulin is detected with an anti-alpha-Tubulin antibody at 1/1000 dilution (red).

Please note: All products are "FOR RESEARCH USE ONLY. NOT FOR USE IN DIAGNOSTIC PROCEDURES"

Our Promise to you: Quality guaranteed and expert technical support

- Replacement or refund for products not performing as stated on the datasheet
- Valid for 12 months from date of delivery
- Response to your inquiry within 24 hours
- We provide support in Chinese, English, French, German, Japanese and Spanish
- Extensive multi-media technical resources to help you
- We investigate all quality concerns to ensure our products perform to the highest standards

If the product does not perform as described on this datasheet, we will offer a refund or replacement. For full details of the Abpromise, please visit <https://www.abcam.com/abpromise> or contact our technical team.

Terms and conditions

- Guarantee only valid for products bought direct from Abcam or one of our authorized distributors