


Product datasheet

Anti-EED antibody ab4469

KO VALIDATED

★★★★★ [3 Abreviews](#) [31 References](#) [3 Images](#)

Overview

Product name	Anti-EED antibody
Description	Rabbit polyclonal to EED
Host species	Rabbit
Tested applications	Suitable for: WB, ICC/IF
Species reactivity	Reacts with: Human, Recombinant fragment Predicted to work with: Mouse, Chicken, Cow, Xenopus laevis 
Immunogen	Synthetic peptide. This information is proprietary to Abcam and/or its suppliers.
Positive control	WB: Human Recombinant EED Protein, HAP1, HeLa and HepG2 cell lysates ICC/IF: U-2 OS cells
General notes	<p>The Life Science industry has been in the grips of a reproducibility crisis for a number of years. Abcam is leading the way in addressing this with our range of recombinant monoclonal antibodies and knockout edited cell lines for gold-standard validation. Please check that this product meets your needs before purchasing.</p> <p>If you have any questions, special requirements or concerns, please send us an inquiry and/or contact our Support team ahead of purchase. Recommended alternatives for this product can be found below, along with publications, customer reviews and Q&As</p>

Properties

Form	Liquid
Storage instructions	Shipped at 4°C. Store at +4°C short term (1-2 weeks). Upon delivery aliquot. Store at -20°C or -80°C. Avoid freeze / thaw cycle.
Storage buffer	pH: 7.40 Preservative: 0.02% Sodium azide Constituent: PBS Batches of this product that have a concentration < 1mg/ml may have BSA added as a stabilising agent. If you would like information about the formulation of a specific lot, please contact our scientific support team who will be happy to help.
Purity	Immunogen affinity purified

Clonality	Polyclonal
Isotype	IgG

Applications

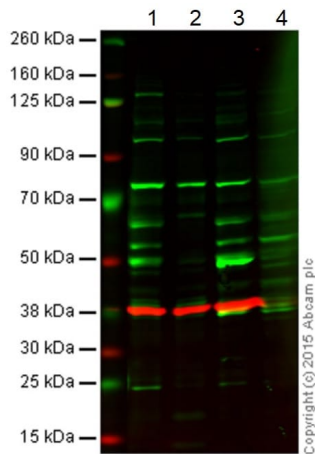
The Abpromise guarantee Our **Abpromise guarantee** covers the use of ab4469 in the following tested applications. The application notes include recommended starting dilutions; optimal dilutions/concentrations should be determined by the end user.

Application	Abreviews	Notes
WB	★★★★★ (3)	1/200. Predicted molecular weight: 49 kDa.
ICC/IF		1/100.

Target

Function	Polycomb group (PcG) protein. Component of the PRC2/EED-EZH2 complex, which methylates 'Lys-9' and 'Lys-27' of histone H3, leading to transcriptional repression of the affected target gene. The PRC2/EED-EZH2 complex may also serve as a recruiting platform for DNA methyltransferases, thereby linking two epigenetic repression systems. Genes repressed by the PRC2/EED-EZH2 complex include HOXC8, HOXA9, MYT1 and CDKN2A.
Tissue specificity	Expressed in brain, colon, heart, kidney, liver, lung, muscle, ovary, peripheral blood leukocytes, pancreas, placenta, prostate, spleen, small intestine, testis, thymus and uterus. Appears to be overexpressed in breast and colon cancer.
Sequence similarities	Belongs to the WD repeat ESC family. Contains 7 WD repeats.
Developmental stage	Expression peaks at the G1/S phase boundary.
Cellular localization	Nucleus. Chromosome. Transiently colocalizes with XIST at inactive X chromosomes.

Images



Western blot - Anti-EED antibody (ab4469)

Lane 1: Wild-type HAP1 cell lysate (20 µg)

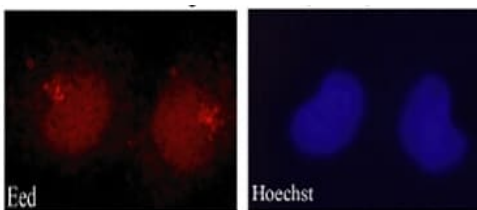
Lane 2: EED knockout HAP1 cell lysate (20 µg)

Lane 3: HeLa cell lysate (20 µg)

Lane 4: HepG2 cell lysate (20 µg)

Lanes 1 - 4: Merged signal (red and green). Green - ab4469 observed at 55 kDa. Red - loading control, **ab8245**, observed at 37 kDa.

ab4469 was shown to recognize EED in wild-type HAP1 cells along with additional cross-reactive bands. No band was observed when EED knockout samples were examined. Wild-type and EED knockout samples were subjected to SDS-PAGE. ab4469 and **ab8245** (loading control to GAPDH) were diluted 1/250 and 1/1000 respectively and incubated overnight at 4°C. Blots were developed with Goat anti-Rabbit IgG H&L (IRDye® 800CW) preadsorbed (**ab216773**) and Goat anti-Mouse IgG H&L (IRDye® 680RD) preadsorbed (**ab216776**) secondary antibodies at 1/10,000 dilution for 1 hour at room temperature before imaging.

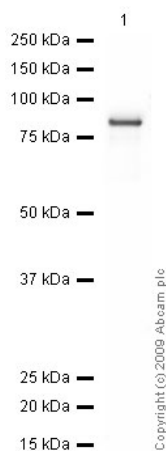


Immunocytochemistry/ Immunofluorescence - Anti-EED antibody (ab4469)

Rabbit polyclonal to EED (ab4469) on U-2 OS (Human bone osteosarcoma epithelial cell line) cells. Antibody used at 1/100.

U-2 OS cells were fixed with PFA (3.7%), permeabilised with PBS 0.1% Triton. Counterstained with Hoechst. Cells were examined with Axioplan 2 microscope (Zeiss).

Secondary antibody: donkey anti-rabbit (Cy3).



Western blot - Anti-EED antibody (ab4469)

Anti-EED antibody (ab4469) at 1/250 dilution + EED Recombinant Protein (Human) at 0.1 µg

Secondary

Goat polyclonal to Rabbit IgG - H&L - Pre-Adsorbed (HRP) at 1/3000 dilution

Performed under reducing conditions.

Predicted band size: 49 kDa

Observed band size: 80 kDa

ab4469 recognizes the full-length recombinant EED protein which has an expected molecular weight of 80 kDa (tagged).

Please note: All products are "FOR RESEARCH USE ONLY. NOT FOR USE IN DIAGNOSTIC PROCEDURES"

Our Abpromise to you: Quality guaranteed and expert technical support

- Replacement or refund for products not performing as stated on the datasheet
- Valid for 12 months from date of delivery
- Response to your inquiry within 24 hours
- We provide support in Chinese, English, French, German, Japanese and Spanish
- Extensive multi-media technical resources to help you
- We investigate all quality concerns to ensure our products perform to the highest standards

If the product does not perform as described on this datasheet, we will offer a refund or replacement. For full details of the Abpromise, please visit <https://www.abcam.com/abpromise> or contact our technical team.

Terms and conditions

- Guarantee only valid for products bought direct from Abcam or one of our authorized distributors