

## Product datasheet


# Anti-EEF2K antibody [EP881Y] ab45168

**KO VALIDATED** RabMAb

[5 References](#) [2 Images](#)

### Overview

---

<b>Product name</b>	Anti-EEF2K antibody [EP881Y]
<b>Description</b>	Rabbit monoclonal [EP881Y] to EEF2K
<b>Host species</b>	Rabbit
<b>Tested applications</b>	<b>Suitable for:</b> WB <b>Unsuitable for:</b> Flow Cyt
<b>Species reactivity</b>	<b>Reacts with:</b> Human <b>Predicted to work with:</b> Mouse, Rat 
<b>Immunogen</b>	Synthetic peptide within Human EEF2K aa 700-800 (C terminal). The exact sequence is proprietary.
<b>General notes</b>	<p>Our RabMAb<sup>®</sup> technology is a patented hybridoma-based technology for making rabbit monoclonal antibodies. For details on our patents, please refer to <a href="#">RabMAb<sup>®</sup> patents</a>.</p> <p>The Life Science industry has been in the grips of a reproducibility crisis for a number of years. Abcam is leading the way in addressing this with our range of recombinant monoclonal antibodies and knockout edited cell lines for gold-standard validation. Please check that this product meets your needs before purchasing.</p> <p>If you have any questions, special requirements or concerns, please send us an inquiry and/or contact our Support team ahead of purchase. Recommended alternatives for this product can be found below, along with publications, customer reviews and Q&amp;As</p>

### Properties

---

<b>Form</b>	Liquid
<b>Storage instructions</b>	Shipped at 4°C. Upon delivery aliquot and store at -20°C. Avoid freeze / thaw cycles.
<b>Storage buffer</b>	pH: 7.20 Preservative: 0.05% Sodium azide Constituents: 99% Tissue culture supernatant, 0.1% BSA
<b>Purity</b>	Tissue culture supernatant
<b>Clonality</b>	Monoclonal
<b>Clone number</b>	EP881Y

Isotype

IgG

## Applications

### The Abpromise guarantee

Our **Abpromise guarantee** covers the use of ab45168 in the following tested applications.

The application notes include recommended starting dilutions; optimal dilutions/concentrations should be determined by the end user.

Application	Abreviews	Notes
WB		1/1000. Predicted molecular weight: 82 kDa.

### Application notes

Is unsuitable for Flow Cyt.

## Target

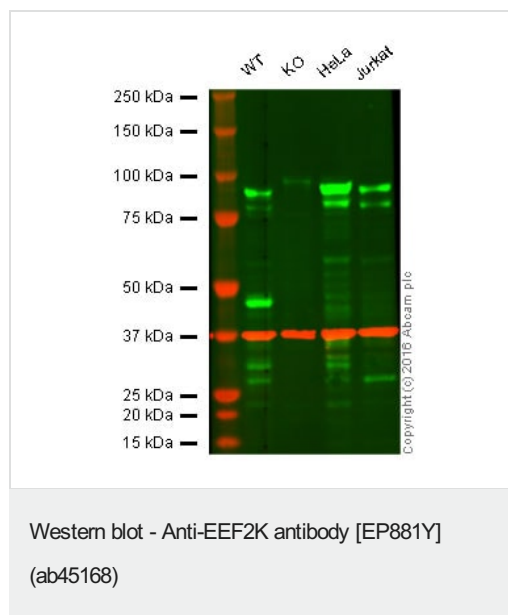
### Function

Phosphorylates eukaryotic elongation factor-2. Binds calmodulin.

### Sequence similarities

Belongs to the protein kinase superfamily. Alpha-type protein kinase family.  
Contains 1 alpha-type protein kinase domain.

## Images



**All lanes :** Anti-EEF2K antibody [EP881Y] (ab45168) at 1/1000 dilution

**All lanes :**

**Predicted band size:** 82 kDa

**Lane 1:** Wild-type HAP1 cell lysate (20 µg)

**Lane 2:** EEF2K knockout HAP1 cell lysate (20 µg)

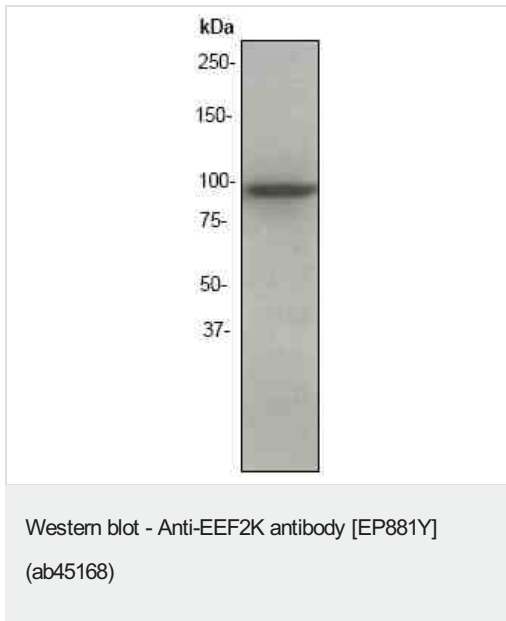
**Lane 3:** HeLa cell lysate (20 µg)

**Lane 4:** Jurkat cell lysate (20 µg)

**Lanes 1 - 4:** Merged signal (red and green). Green - ab45168 observed at 95 kDa. Red - loading control, **ab8245**, observed at 37 kDa.

ab45168 was shown to specifically react with EEF2K when EEF2K knockout samples were used. Wild-type and EEF2K knockout samples were subjected to SDS-PAGE. ab45168 and **ab8245** (loading control to GAPDH) were diluted 1/1000 and 1/10000 respectively and incubated overnight at 4°C. Blots were developed with Goat anti-Rabbit IgG H&L (IRDye® 800CW) preadsorbed (**ab216773**) and Goat anti-Mouse IgG H&L (IRDye®

680RD) preadsorbed (**ab216776**) secondary antibodies at 1/10000 dilution for 1 h at room temperature before imaging.



Anti-EEF2K antibody [EP881Y] (ab45168) at 1/1000 dilution + HEK293 cell lysate

**Predicted band size:** 82 kDa

**Observed band size:** 95 kDa

**Please note:** All products are "FOR RESEARCH USE ONLY. NOT FOR USE IN DIAGNOSTIC PROCEDURES"

### Our Abpromise to you: Quality guaranteed and expert technical support

---

- Replacement or refund for products not performing as stated on the datasheet
- Valid for 12 months from date of delivery
- Response to your inquiry within 24 hours
- We provide support in Chinese, English, French, German, Japanese and Spanish
- Extensive multi-media technical resources to help you
- We investigate all quality concerns to ensure our products perform to the highest standards

If the product does not perform as described on this datasheet, we will offer a refund or replacement. For full details of the Abpromise, please visit <https://www.abcam.com/abpromise> or contact our technical team.

### Terms and conditions

---

- Guarantee only valid for products bought direct from Abcam or one of our authorized distributors