

Anti-EFEMP1/Fibulin-3 antibody ab151976

[1 References](#) [6 Images](#)

Overview

Product name	Anti-EFEMP1/Fibulin-3 antibody
Description	Rabbit polyclonal to EFEMP1/Fibulin-3
Host species	Rabbit
Tested applications	Suitable for: WB, IHC-P
Species reactivity	Reacts with: Mouse, Rat, Human
Immunogen	Recombinant fragment corresponding to Human EFEMP1/Fibulin-3 aa 168-488. Database link: Q12805
Positive control	WB: HEK-293T, A431, H1299, HepG2 and HeLa whole cell lysates; rat liver tissue lysate; mouse liver tissue lysate. IHC-P: NCIN87 xenograft tissue.
General notes	<p>The Life Science industry has been in the grips of a reproducibility crisis for a number of years. Abcam is leading the way in addressing this with our range of recombinant monoclonal antibodies and knockout edited cell lines for gold-standard validation. Please check that this product meets your needs before purchasing.</p> <p>If you have any questions, special requirements or concerns, please send us an inquiry and/or contact our Support team ahead of purchase. Recommended alternatives for this product can be found below, along with publications, customer reviews and Q&As</p>

Properties

Form	Liquid
Storage instructions	Shipped at 4°C. Store at +4°C short term (1-2 weeks). Upon delivery aliquot. Store at -20°C or -80°C. Avoid freeze / thaw cycle.
Storage buffer	pH: 7.00 Preservative: 0.025% Proclin 300 Constituents: 79% PBS, 20% Glycerol (glycerin, glycerine)
Purity	Immunogen affinity purified
Clonality	Polyclonal
Isotype	IgG

Applications

The Abpromise guarantee

Our **Abpromise guarantee** covers the use of ab151976 in the following tested applications.

The application notes include recommended starting dilutions; optimal dilutions/concentrations should be determined by the end user.

Application	Abreviews	Notes
WB		1/500 - 1/3000. Predicted molecular weight: 54 kDa.
IHC-P		1/100 - 1/1000. Perform heat mediated antigen retrieval with citrate buffer pH 6 before commencing with IHC staining protocol.

Target

Function

Binds EGFR, the EGF receptor, inducing EGFR autophosphorylation and the activation of downstream signaling pathways. May play a role in cell adhesion and migration. May function as a negative regulator of chondrocyte differentiation. In the olfactory epithelium, it may regulate glial cell migration, differentiation and the ability of glial cells to support neuronal neurite outgrowth.

Tissue specificity

In the eye, associated with photoreceptor outer and inner segment regions, the nerve fiber layer, outer nuclear layer and inner and outer plexiform layers of the retina.

Involvement in disease

Defects in EFEMP1 are a cause of Doyme honeycomb retinal dystrophy (DHRD) [MIM:126600]; also known as malattia leventinese (MLVT) (ML). DHRD is an autosomal dominant disease characterized by yellow-white deposits known as drusen that accumulate beneath the retinal pigment epithelium.

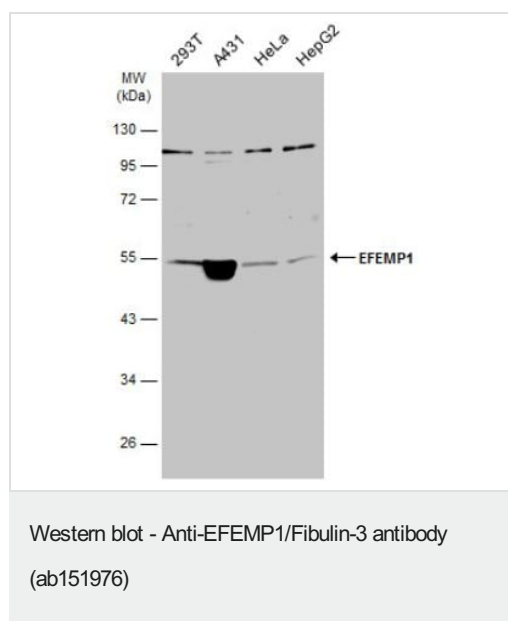
Sequence similarities

Belongs to the fibulin family.
Contains 6 EGF-like domains.

Cellular localization

Secreted > extracellular space. Secreted > extracellular space > extracellular matrix. Localizes to the lamina propria underneath the olfactory epithelium.

Images



All lanes : Anti-EFEMP1/Fibulin-3 antibody (ab151976) at 1/1000 dilution

Lane 1 : HEK-293T whole cell extracts

Lane 2 : A431 whole cell extracts

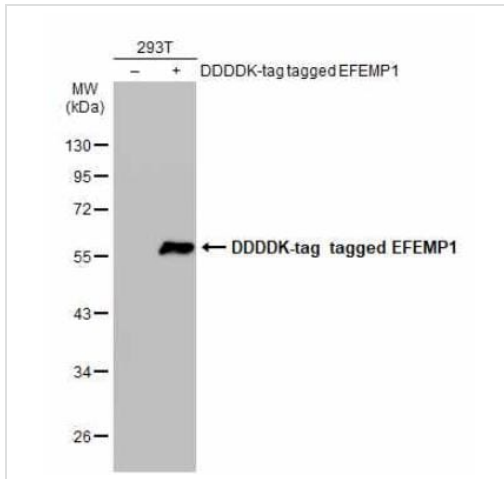
Lane 3 : HeLa whole cell extracts

Lane 4 : HepG2 whole cell extracts

Lysates/proteins at 30 µg per lane.

Predicted band size: 54 kDa

10% SDS-PAGE



Western blot - Anti-EFEMP1/Fibulin-3 antibody
(ab151976)

All lanes : Anti-EFEMP1/Fibulin-3 antibody (ab151976) at 1/5000 dilution

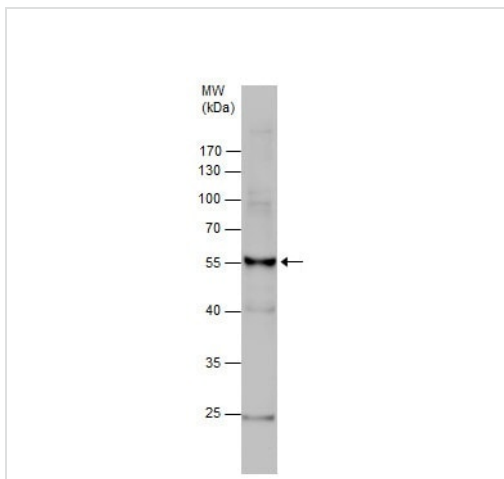
Lane 1 : Non-transfected HEK-293T whole cell extracts

Lane 2 : Transfected HEK-293T whole cell extracts

Lysates/proteins at 30 µg per lane.

Predicted band size: 54 kDa

10% SDS-PAGE



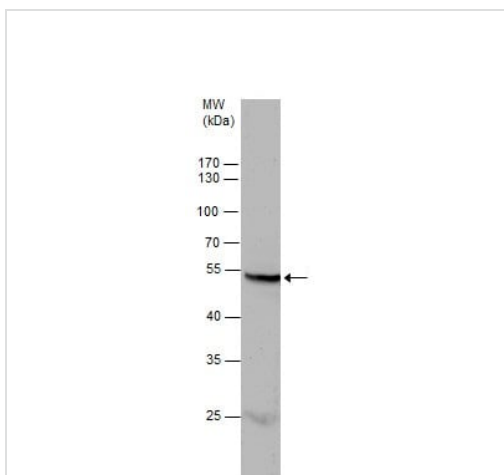
Western blot - Anti-EFEMP1/Fibulin-3 antibody
(ab151976)

Anti-EFEMP1/Fibulin-3 antibody (ab151976) at 1/500 dilution + rat liver lysate at 50 µg

Secondary

HRP-conjugated anti-rabbit IgG

Predicted band size: 54 kDa



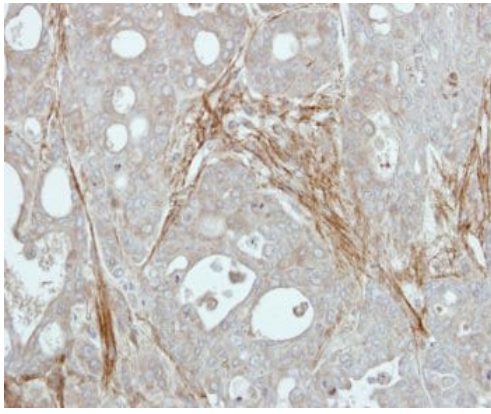
Western blot - Anti-EFEMP1/Fibulin-3 antibody
(ab151976)

Anti-EFEMP1/Fibulin-3 antibody (ab151976) at 1/1000 dilution + Mouse liver lysate at 50 µg

Secondary

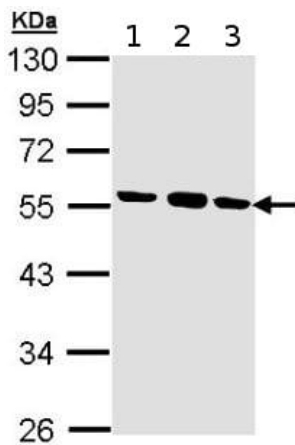
HRP-conjugated anti-rabbit IgG

Predicted band size: 54 kDa



Immunohistochemistry (Formalin/PFA-fixed paraffin-embedded sections) - Anti-EFEMP1/Fibulin-3 antibody (ab151976)

Immunohistochemical analysis of paraffin embedded NCIN87 xenograft tissue labeling EFEMP1/Fibulin-3 with ab151976 at a 1/500 dilution.



Western blot - Anti-EFEMP1/Fibulin-3 antibody (ab151976)

All lanes : Anti-EFEMP1/Fibulin-3 antibody (ab151976) at 1/1000 dilution

Lane 1 : HEK-293T whole cell lysate

Lane 2 : A431 whole cell lysate

Lane 3 : H1299 whole cell lysate

Lysates/proteins at 30 µg per lane.

Predicted band size: 54 kDa

10% SDS PAGE

Please note: All products are "FOR RESEARCH USE ONLY. NOT FOR USE IN DIAGNOSTIC PROCEDURES"

Our Abpromise to you: Quality guaranteed and expert technical support

- Replacement or refund for products not performing as stated on the datasheet
- Valid for 12 months from date of delivery
- Response to your inquiry within 24 hours
- We provide support in Chinese, English, French, German, Japanese and Spanish
- Extensive multi-media technical resources to help you
- We investigate all quality concerns to ensure our products perform to the highest standards

If the product does not perform as described on this datasheet, we will offer a refund or replacement. For full details of the Abpromise, please visit <https://www.abcam.com/abpromise> or contact our technical team.

Terms and conditions

- Guarantee only valid for products bought direct from Abcam or one of our authorized distributors