




Product datasheet

Anti-EFHD2/SWS1 antibody ab24368

★★★★★ [1 Abreviews](#) [4 References](#) [1 Image](#)

Overview

Product name	Anti-EFHD2/SWS1 antibody
Description	Goat polyclonal to EFHD2/SWS1
Host species	Goat
Tested applications	Suitable for: WB
Species reactivity	Reacts with: Human Predicted to work with: Mouse, Rat, Cow, Dog 
Immunogen	Synthetic peptide corresponding to Human EFHD2/SWS1 aa 230-240 (C terminal). Sequence: (C)AAFKELQSTFK <div>  Run BLAST with  Run BLAST with </div>
Positive control	WB: Human thymus, lymph node and tonsil lysates.
General notes	<p>The Life Science industry has been in the grips of a reproducibility crisis for a number of years. Abcam is leading the way in addressing this with our range of recombinant monoclonal antibodies and knockout edited cell lines for gold-standard validation. Please check that this product meets your needs before purchasing.</p> <p>If you have any questions, special requirements or concerns, please send us an inquiry and/or contact our Support team ahead of purchase. Recommended alternatives for this product can be found below, along with publications, customer reviews and Q&As</p>

Properties

Form	Liquid
Storage instructions	Shipped at 4°C. Upon delivery aliquot and store at -20°C. Avoid freeze / thaw cycles.
Storage buffer	pH: 7.30 Preservative: 0.02% Sodium azide Constituents: Tris buffered saline, 0.5% BSA
Purity	Immunogen affinity purified
Purification notes	Purified from goat serum by ammonium sulphate precipitation followed by antigen affinity chromatography using the immunizing peptide.
Clonality	Polyclonal

Isotype

IgG

Applications

The Abpromise guarantee

Our **Abpromise guarantee** covers the use of ab24368 in the following tested applications.

The application notes include recommended starting dilutions; optimal dilutions/concentrations should be determined by the end user.

Application	Abreviews	Notes
WB		Use a concentration of 0.5 - 1.5 µg/ml. Detects a band of approximately 28-30 kDa. 1 hour primary incubation is recommended for this product.

Target

Function

May regulate B-cell receptor (BCR)-induced immature and primary B-cell apoptosis (By similarity). Plays a role as negative regulator of the canonical NF-kappa-B-activating branch (By similarity). Controls spontaneous apoptosis through the regulation of BCL2L1 abundance.

Tissue specificity

Found in lymphocytes; preferentially expressed in CD8+ cells.

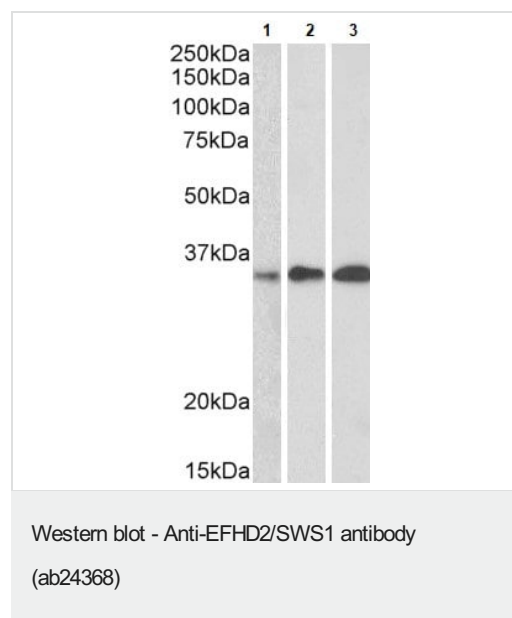
Sequence similarities

Contains 2 EF-hand domains.

Cellular localization

Membrane raft. In immature B-cell line WEHI231.

Images



All lanes : Anti-EFHD2/SWS1 antibody (ab24368) at 0.5 µg/ml

Lane 1 : Human thymus lysate

Lane 2 : Human lymph node lysate

Lane 3 : Human tonsil lysate

Lysates/proteins at 35 µg per lane.

Western blot analysis labeling EFHD2/SWS1 with ab24368 at 0.5 ug/ml.

Please note: All products are "FOR RESEARCH USE ONLY. NOT FOR USE IN DIAGNOSTIC PROCEDURES"

Our Abpromise to you: Quality guaranteed and expert technical support

- Replacement or refund for products not performing as stated on the datasheet
- Valid for 12 months from date of delivery
- Response to your inquiry within 24 hours
- We provide support in Chinese, English, French, German, Japanese and Spanish
- Extensive multi-media technical resources to help you
- We investigate all quality concerns to ensure our products perform to the highest standards

If the product does not perform as described on this datasheet, we will offer a refund or replacement. For full details of the Abpromise, please visit <https://www.abcam.com/abpromise> or contact our technical team.

Terms and conditions

- Guarantee only valid for products bought direct from Abcam or one of our authorized distributors