


Product datasheet

Anti-EFTUD2 antibody ab72456

★★★★★ [1 Abreviews](#) [4 References](#) [4 Images](#)

Overview

Product name	Anti-EFTUD2 antibody
Description	Rabbit polyclonal to EFTUD2
Host species	Rabbit
Tested applications	Suitable for: IHC-P, WB, IP
Species reactivity	Reacts with: Mouse, Human Predicted to work with: Rat, Rabbit, Horse, Chicken, Guinea pig, Cow, Dog, Turkey, Pig, Xenopus laevis, Caenorhabditis elegans, Chimpanzee, Zebrafish, Rhesus monkey, Gorilla, Orangutan, Xenopus tropicalis 
Immunogen	Synthetic peptide (Human) corresponding to a region between residues 1 and 50 of EFTUD2. (NP_004238.2)
General notes	<p>The Life Science industry has been in the grips of a reproducibility crisis for a number of years. Abcam is leading the way in addressing this with our range of recombinant monoclonal antibodies and knockout edited cell lines for gold-standard validation. Please check that this product meets your needs before purchasing.</p> <p>If you have any questions, special requirements or concerns, please send us an inquiry and/or contact our Support team ahead of purchase. Recommended alternatives for this product can be found below, along with publications, customer reviews and Q&As</p>

Properties

Form	Liquid
Storage instructions	Shipped at 4°C. Upon delivery aliquot and store at -20°C. Avoid freeze / thaw cycles.
Storage buffer	pH: 6.8 Preservative: 0.09% Sodium azide Constituents: 0.1% BSA, Tris buffered saline
Purity	Immunogen affinity purified
Clonality	Polyclonal
Isotype	IgG

Applications

The Abpromise guarantee

Our **Abpromise guarantee** covers the use of ab72456 in the following tested applications.

The application notes include recommended starting dilutions; optimal dilutions/concentrations should be determined by the end user.

Application	Abreviews	Notes
IHC-P		Use a concentration of 1 µg/ml. Perform heat mediated antigen retrieval with citrate buffer pH 6 before commencing with IHC staining protocol.
WB		1/2000 - 1/10000. Detects a band of approximately 117 kDa (predicted molecular weight: 109 kDa).
IP		Use at 2-5 µg/mg of lysate.

Target

Function

Component of the U5 snRNP complex required for pre-mRNA splicing. Binds GTP.

Involvement in disease

Defects in EFTUD2 are the cause of mandibulofacial dysostosis with microcephaly (MFDM) [MIM:610536]. A rare syndrome characterized by progressive microcephaly, midface and malar hypoplasia, micrognathia, microtia, dysplastic ears, preauricular skin tags, significant developmental delay, and speech delay. Many patients have major sequelae, including choanal atresia that results in respiratory difficulties, conductive hearing loss, and cleft palate.

Sequence similarities

Belongs to the GTP-binding elongation factor family. EF-G/EF-2 subfamily.

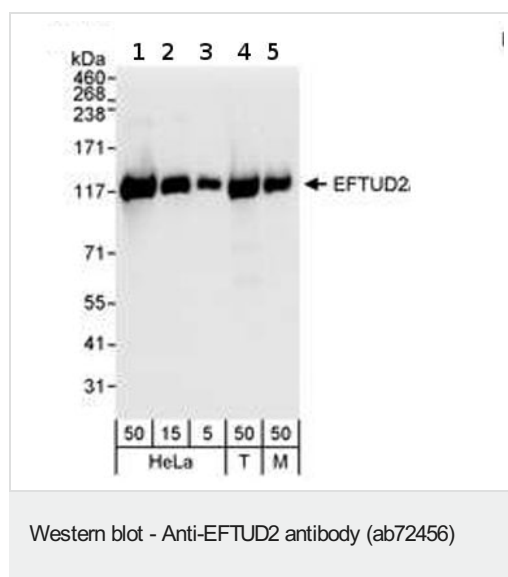
Post-translational modifications

Phosphorylated upon DNA damage, probably by ATM or ATR.

Cellular localization

Nucleus.

Images



All lanes : Anti-EFTUD2 antibody (ab72456) at 0.04 µg/ml

Lane 1 : HeLa whole cell lysate at 50 µg

Lane 2 : HeLa whole cell lysate at 15 µg

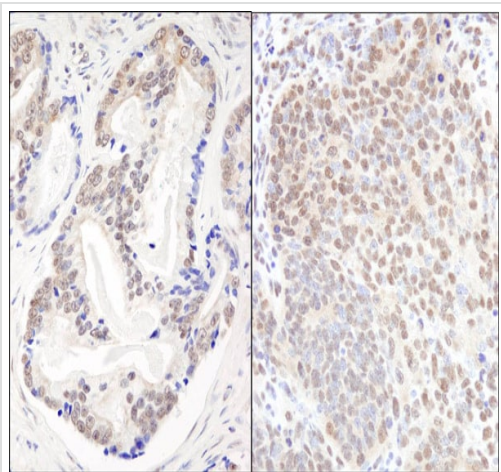
Lane 3 : HeLa whole cell lysate at 5 µg

Lane 4 : 293T whole cell lysate at 50 µg

Lane 5 : NIH3T3 whole cell lysate at 50 µg

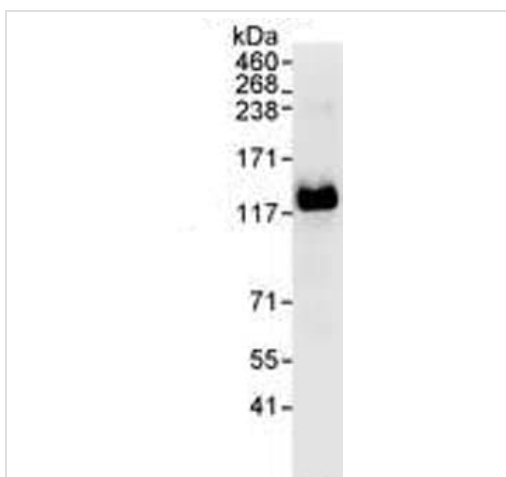
Predicted band size: 109 kDa

Observed band size: 117 kDa



Immunohistochemistry (Formalin/PFA-fixed paraffin-embedded sections) analysis of human prostate carcinoma (left) and mouse teratoma (right) tissues labelling EFTUD2 with ab72456 at 1/200 (1µg/ml). Detection: DAB.

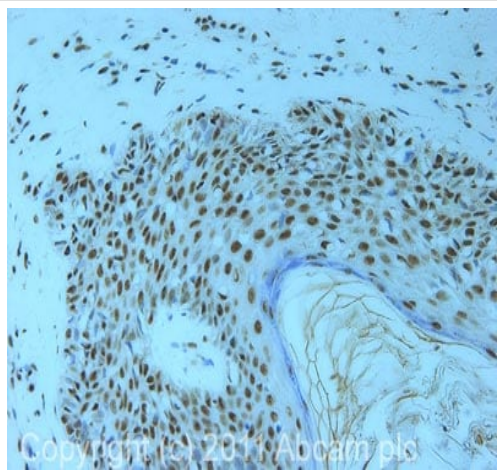
Immunohistochemistry (Formalin/PFA-fixed paraffin-embedded sections) - Anti-EFTUD2 antibody (ab72456)



HeLa whole cell lysate (1 mg for IP, 20% of IP loaded), with ab72456 used for IP at 3 µg/mg lysate, and at 0.1 µg/ml for subsequent WB.

Detection: Chemiluminescence with an exposure time of 10 seconds.

Immunoprecipitation - Anti-EFTUD2 antibody (ab72456)



Immunohistochemistry (Formalin/PFA-fixed paraffin-embedded sections) - Anti-EFTUD2 antibody (ab72456)

IHC image of ab72456 staining in human melanoma formalin fixed paraffin embedded tissue section, performed on a Leica Bond™ system using the standard protocol F. The section was pre-treated using heat mediated antigen retrieval with sodium citrate buffer (pH6, epitope retrieval solution 1) for 20 mins. The section was then incubated with ab72456, 1 µg/ml, for 15 mins at room temperature and detected using an HRP conjugated compact polymer system. DAB was used as the chromogen. The section was then counterstained with haematoxylin and mounted with DPX.

For other IHC staining systems (automated and non-automated) customers should optimize variable parameters such as antigen retrieval conditions, primary antibody concentration and antibody incubation times.

Please note: All products are "FOR RESEARCH USE ONLY. NOT FOR USE IN DIAGNOSTIC PROCEDURES"

Our Abpromise to you: Quality guaranteed and expert technical support

- Replacement or refund for products not performing as stated on the datasheet
- Valid for 12 months from date of delivery
- Response to your inquiry within 24 hours
- We provide support in Chinese, English, French, German, Japanese and Spanish
- Extensive multi-media technical resources to help you
- We investigate all quality concerns to ensure our products perform to the highest standards

If the product does not perform as described on this datasheet, we will offer a refund or replacement. For full details of the Abpromise, please visit <https://www.abcam.com/abpromise> or contact our technical team.

Terms and conditions

- Guarantee only valid for products bought direct from Abcam or one of our authorized distributors