

Product datasheet

Anti-EGF antibody ab9695

★★★★★ [3 Abreviews](#) [31 References](#) [2 Images](#)

Overview

Product name	Anti-EGF antibody
Description	Rabbit polyclonal to EGF
Host species	Rabbit
Tested applications	Suitable for: WB, IHC-P, ELISA, Neutralising, Sandwich ELISA
Species reactivity	Reacts with: Human, Recombinant fragment
Immunogen	Recombinant full length protein corresponding to Human EGF. Highly pure (>98%) recombinant hEGF (human Epidermal Growth Factor) Database link: P01133
General notes	<p>Although some customers have been successful in IHC we no longer batch test in this application. For IHC validate antibody please see ab184265.</p> <p>The Life Science industry has been in the grips of a reproducibility crisis for a number of years. Abcam is leading the way in addressing this with our range of recombinant monoclonal antibodies and knockout edited cell lines for gold-standard validation. Please check that this product meets your needs before purchasing.</p> <p>If you have any questions, special requirements or concerns, please send us an inquiry and/or contact our Support team ahead of purchase. Recommended alternatives for this product can be found below, along with publications, customer reviews and Q&As</p>

Properties

Form	Lyophilized:Reconstitute with 200µl of sterile water.
Storage instructions	Shipped at 4°C. Store at +4°C short term (1-2 weeks). Upon delivery aliquot. Store at -20°C long term.
Storage buffer	No preservative, sterile filtered
Purity	Immunogen affinity purified
Clonality	Polyclonal
Isotype	IgG
Light chain type	unknown

Applications

The Abpromise guarantee

Our **Abpromise guarantee** covers the use of ab9695 in the following tested applications.

The application notes include recommended starting dilutions; optimal dilutions/concentrations should be determined by the end user.

Application	Abreviews	Notes
WB	★★★★★ (2)	Use a concentration of 0.1 - 0.2 µg/ml. To detect hEGF by Western Blot analysis this antibody can be used at a concentration of 0.1 - 0.2 µg/ml. Used in conjunction with compatible secondary reagents the detection limit for recombinant hEGF is 1.5 - 3.0 ng/lane, under either reducing or non-reducing conditions. Western blot bands should be around 6.2 kDa.
IHC-P	★★★★★ (1)	Use at an assay dependent concentration.
ELISA		Use at an assay dependent concentration. To detect hEGF by direct ELISA (using 100µl/well antibody solution) a concentration of at least 0.5µg/ml of this antibody is required. This antigen affinity purified antibody, in conjunction with compatible secondary reagents, allows the detection of 0.2 - 0.4 ng/well of recombinant hEGF.
Neutralising		Use at an assay dependent concentration. To yield one-half maximal inhibition [ND50] of the biological activity of hEGF (2.0 ng/ml), a concentration of 0.25 - 0.35 µg/ml of this antibody is required.
Sandwich ELISA		Use a concentration of 0.5 - 2 µg/ml. For sandwich ELISA, use this antibody as Detection at 0.5µg/ml with ab18635 as Capture.

Target

Function

EGF stimulates the growth of various epidermal and epithelial tissues in vivo and in vitro and of some fibroblasts in cell culture. Magnesiotropic hormone that stimulates magnesium reabsorption in the renal distal convoluted tubule via engagement of EGFR and activation of the magnesium channel TRPM6. Can induce neurite outgrowth in motoneurons of the pond snail *Lymnaea stagnalis* in vitro (PubMed:10964941).

Tissue specificity

Expressed in kidney, salivary gland, cerebrum and prostate.

Involvement in disease

Hypomagnesemia 4

Sequence similarities

Contains 9 EGF-like domains.
Contains 9 LDL-receptor class B repeats.

Post-translational modifications

O-glycosylated with core 1-like and core 2-like glycans. It is uncertain if Ser-954 or Thr-955 is O-glycosylated. The modification here shows glycan heterogeneity: HexHexNAc (major) and Hex2HexNAc2 (minor).

Cellular localization

Membrane.

Images

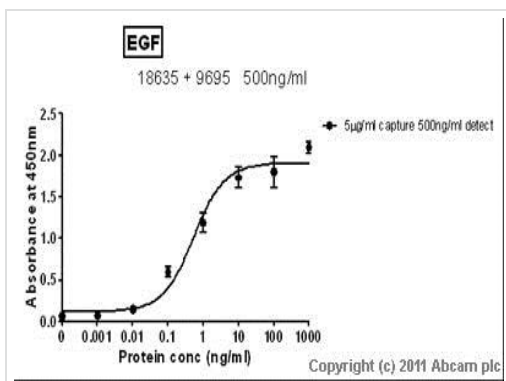


Western blot - Anti-EGF antibody (ab9695)

Primary ab9695 was used at a dilution of 0.2 ug/ml.

Lane 1: 250 ng Recombinant human EGF protein

Lane 2: 125 ng Recombinant human EGF protein



Sandwich ELISA - Anti-EGF antibody (ab9695)

Standard Curve for EGF (Analyte: **ab51082**) dilution range 1pg/ml to 1ug/ml using Capture Antibody Mouse monoclonal [S-177] to EGF (**ab18635**) at 5ug/ml and Detector Antibody Rabbit polyclonal to EGF (ab9695) at 0.5ug/ml

Please note: All products are "FOR RESEARCH USE ONLY. NOT FOR USE IN DIAGNOSTIC PROCEDURES"

Our Abpromise to you: Quality guaranteed and expert technical support

- Replacement or refund for products not performing as stated on the datasheet
- Valid for 12 months from date of delivery
- Response to your inquiry within 24 hours
- We provide support in Chinese, English, French, German, Japanese and Spanish
- Extensive multi-media technical resources to help you
- We investigate all quality concerns to ensure our products perform to the highest standards

If the product does not perform as described on this datasheet, we will offer a refund or replacement. For full details of the Abpromise, please visit <https://www.abcam.com/abpromise> or contact our technical team.

Terms and conditions

- Guarantee only valid for products bought direct from Abcam or one of our authorized distributors