

Product datasheet

Anti-EHD1 antibody [EPR4954] ab109311

Recombinant RabMAb

★★★★☆ [1 Abreviews](#) [19 References](#) [10 Images](#)

Overview

Product name	Anti-EHD1 antibody [EPR4954]
Description	Rabbit monoclonal [EPR4954] to EHD1
Host species	Rabbit
Tested applications	Suitable for: WB, IP, IHC-P
Species reactivity	Reacts with: Mouse, Rat, Human
Immunogen	Synthetic peptide. This information is proprietary to Abcam and/or its suppliers.
Positive control	WB: HepG2, Human testis, SW480, SK-OV-3, Human brain, HeLa, Mouse brain, and Rat brain lysates. IHC-P: human thyroid carcinoma, kidney and tonsil, mouse lung, and rat lung tissues. IP: HeLa cells.
General notes	<p>This product is a recombinant monoclonal antibody, which offers several advantages including:</p> <ul style="list-style-type: none">- High batch-to-batch consistency and reproducibility- Improved sensitivity and specificity- Long-term security of supply- Animal-free production <p>For more information see here.</p> <p>Our RabMAb[®] technology is a patented hybridoma-based technology for making rabbit monoclonal antibodies. For details on our patents, please refer to RabMAb[®] patents.</p>

Properties

Form	Liquid
Storage instructions	Shipped at 4°C. Store at +4°C short term (1-2 weeks). Upon delivery aliquot. Store at -20°C. Stable for 12 months at -20°C.
Storage buffer	pH: 7.20 Preservative: 0.01% Sodium azide Constituents: PBS, 40% Glycerol, 0.05% BSA
Purity	Protein A purified
Clonality	Monoclonal
Clone number	EPR4954

Isotype

IgG

Applications

The Abpromise guarantee

Our **Abpromise guarantee** covers the use of ab109311 in the following tested applications.

The application notes include recommended starting dilutions; optimal dilutions/concentrations should be determined by the end user.

Application	Abreviews	Notes
WB	★★★★★ (1)	1/1000 - 1/10000. Detects a band of approximately 60 kDa (predicted molecular weight: 61 kDa).
IP		1/10 - 1/100.
IHC-P		Use at an assay dependent concentration. Perform heat mediated antigen retrieval before commencing with IHC staining protocol. (heat to 98°C, allow to cool for 10-20 minutes) 1:120 in human tissues / 1:1600 in mouse and rat tissues See IHC antigen retrieval protocols.

Target

Function

Acts in early endocytic membrane fusion and membrane trafficking of recycling endosomes.

Tissue specificity

Highly expressed in testis.

Sequence similarities

Contains 1 EF-hand domain.

Contains 1 EH domain.

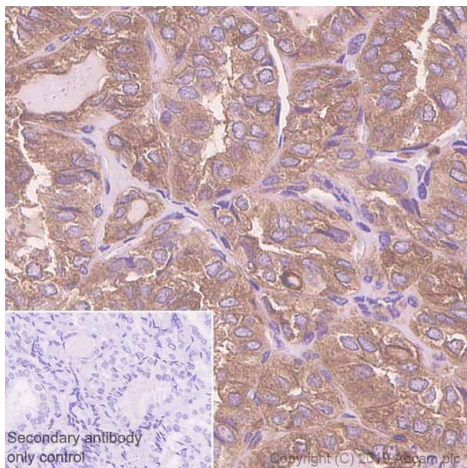
Domain

The EH domain interacts with Asn-Pro-Phe (NPF) motifs of target proteins.

Cellular localization

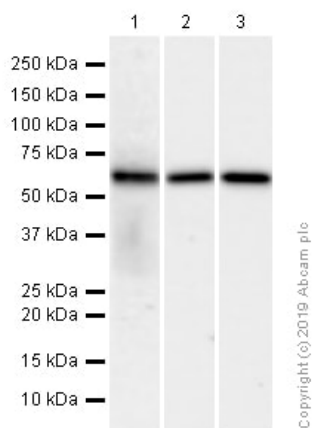
Cell membrane. Early endosome membrane. Recycling endosome membrane. Associated with intracellular tubulovesicular structures.

Images



Immunohistochemistry (Formalin/PFA-fixed paraffin-embedded sections) - Anti-EHD1 antibody [EPR4954] (ab109311)

Immunohistochemistry (Formalin/PFA-fixed paraffin-embedded sections) analysis of human thyroid carcinoma tissue sections labeling EHD1 with purified ab109311 at 1/120 dilution (2.85 µg/ml). Heat mediated antigen retrieval using Bond™ Epitope Retrieval Solution 2 (pH 9.0). Rabbit specific IHC polymer detection kit HRP/DAB (**ab209101**) was used as the secondary antibody. Negative control: PBS instead of the primary antibody. Hematoxylin was used as a counterstain.



Western blot - Anti-EHD1 antibody [EPR4954] (ab109311)

All lanes : Anti-EHD1 antibody [EPR4954] (ab109311) at 1/10000 dilution (Purified)

Lane 1 : HeLa (Human cervix adenocarcinoma epithelial cell) whole cell lysates

Lane 2 : Mouse brain lysates

Lane 3 : Rat brain lysates

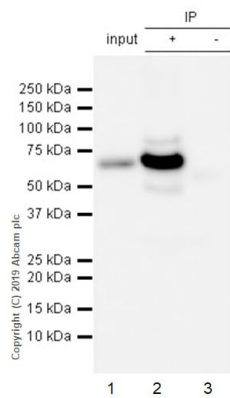
Lysates/proteins at 15 µg per lane.

Secondary

All lanes : Goat Anti-Rabbit IgG H&L (HRP) (**ab97051**) at 1/20000 dilution

Predicted band size: 61 kDa

Observed band size: 60 kDa



Immunoprecipitation - Anti-EHD1 antibody
[EPR4954] (ab109311)

ab109311 (purified) at 1/30 dilution (2ug) immunoprecipitating EHD1 in HeLa whole cell lysate.

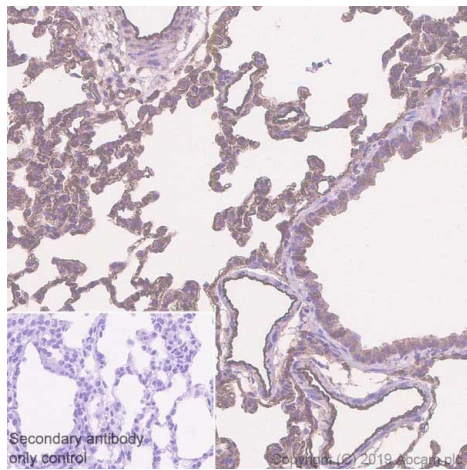
Lane 1 (input): HeLa (Human cervix adenocarcinoma epithelial cell) whole cell lysate 10ug

Lane 2 (+): ab109311 & HeLa whole cell lysate

Lane 3 (-): Rabbit monoclonal IgG (**ab172730**) instead of ab109311 in HeLa whole cell lysate

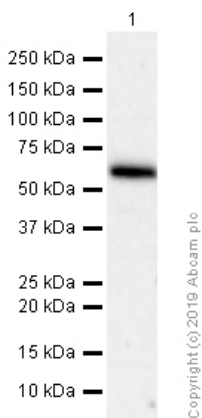
For western blotting, VeriBlot for IP Detection Reagent (HRP) (**ab131366**) was used at 1/1000 dilution.

Blocking and diluting buffer: 5% NFDm/TBST.



Immunohistochemistry (Formalin/PFA-fixed paraffin-embedded sections) - Anti-EHD1 antibody
[EPR4954] (ab109311)

Immunohistochemistry (Formalin/PFA-fixed paraffin-embedded sections) analysis of rat lung tissue sections labeling EHD1 with purified ab109311 at 1/1600 dilution (0.21 µg/ml). Heat mediated antigen retrieval using Bond™ Epitope Retrieval Solution 2 (pH 9.0). Rabbit specific IHC polymer detection kit HRP/DAB (**ab209101**) was used as the secondary antibody. Negative control: PBS instead of the primary antibody. Hematoxylin was used as a counterstain.



Western blot - Anti-EHD1 antibody [EPR4954]
(ab109311)

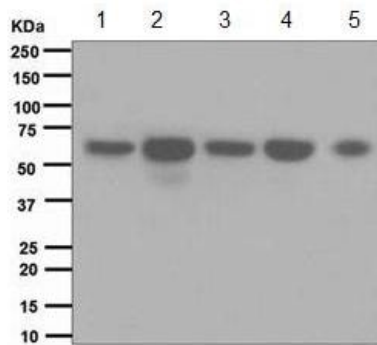
Anti-EHD1 antibody [EPR4954] (ab109311) at 1/10000 dilution (Purified) + Human brain lysates at 15 µg

Secondary

Goat Anti-Rabbit IgG (HRP) with minimal cross-reactivity with human IgG at 1/2000 dilution

Predicted band size: 61 kDa

Observed band size: 60 kDa



Western blot - Anti-EHD1 antibody [EPR4954] (ab109311)

All lanes : Anti-EHD1 antibody [EPR4954] (ab109311) at 1/1000 dilution ((unpurified))

Lane 1 : HepG2 cell lysates

Lane 2 : Human testis lysates

Lane 3 : SW480 cell lysates

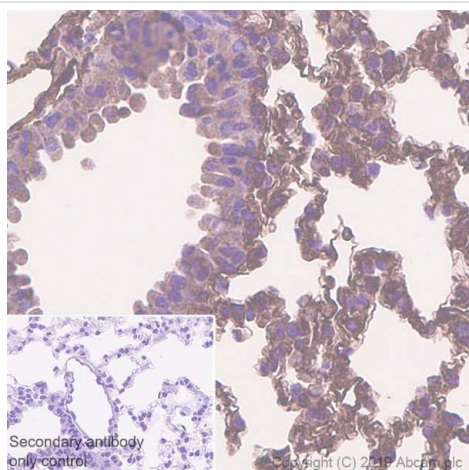
Lane 4 : SK-OV-3 cell lysates

Lane 5 : HeLa cell lysates

Lysates/proteins at 10 µg per lane.

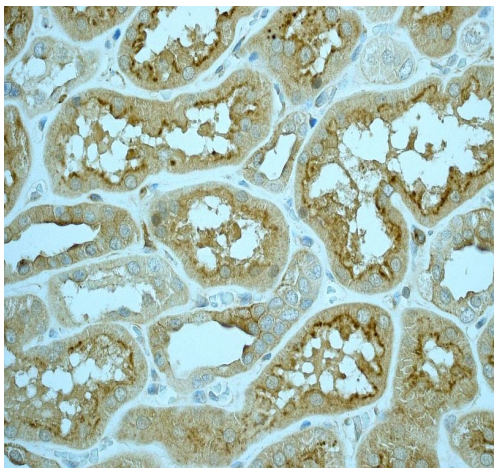
Predicted band size: 61 kDa

Observed band size: 60 kDa



Immunohistochemistry (Formalin/PFA-fixed paraffin-embedded sections) - Anti-EHD1 antibody [EPR4954] (ab109311)

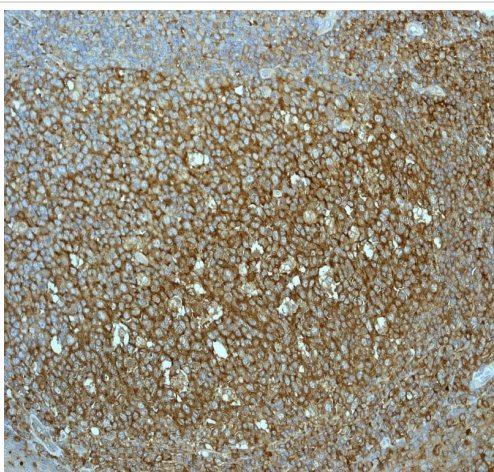
Immunohistochemistry (Formalin/PFA-fixed paraffin-embedded sections) analysis of mouse lung tissue sections labeling EHD1 with purified ab109311 at 1/1600 dilution (0.21 µg/ml). Heat mediated antigen retrieval using Bond™ Epitope Retrieval Solution 2 (pH 9.0). Rabbit specific IHC polymer detection kit HRP/DAB (**ab209101**) was used as the secondary antibody. Negative control: PBS instead of the primary antibody. Hematoxylin was used as a counterstain.



Immunohistochemistry (Formalin/PFA-fixed paraffin-embedded sections) - Anti-EHD1 antibody [EPR4954] (ab109311)

Immunohistochemical analysis of EHD1 in paraffin embedded Human kidney tissue, using unpurified ab109311 at a 1/100 dilution.

Perform heat mediated antigen retrieval before commencing with IHC staining protocol.







Immunohistochemistry (Formalin/PFA-fixed paraffin-embedded sections) - Anti-EHD1 antibody [EPR4954] (ab109311)

Immunohistochemical analysis of EHD1 in paraffin embedded Human tonsil tissue, using unpurified ab109311 at a 1/100 dilution.

Perform heat mediated antigen retrieval before commencing with IHC staining protocol.

Why choose a recombinant antibody?

 <p>Research with confidence Consistent and reproducible results</p>	 <p>Long-term and scalable supply Recombinant technology</p>
 <p>Success from the first experiment Confirmed specificity</p>	 <p>Ethical standards compliant Animal-free production</p>

Anti-EHD1 antibody [EPR4954] (ab109311)

Please note: All products are "FOR RESEARCH USE ONLY. NOT FOR USE IN DIAGNOSTIC PROCEDURES"

Our Abpromise to you: Quality guaranteed and expert technical support

- Replacement or refund for products not performing as stated on the datasheet
- Valid for 12 months from date of delivery
- Response to your inquiry within 24 hours
- We provide support in Chinese, English, French, German, Japanese and Spanish
- Extensive multi-media technical resources to help you
- We investigate all quality concerns to ensure our products perform to the highest standards

If the product does not perform as described on this datasheet, we will offer a refund or replacement. For full details of the Abpromise, please visit <https://www.abcam.com/abpromise> or contact our technical team.

Terms and conditions

- Guarantee only valid for products bought direct from Abcam or one of our authorized distributors